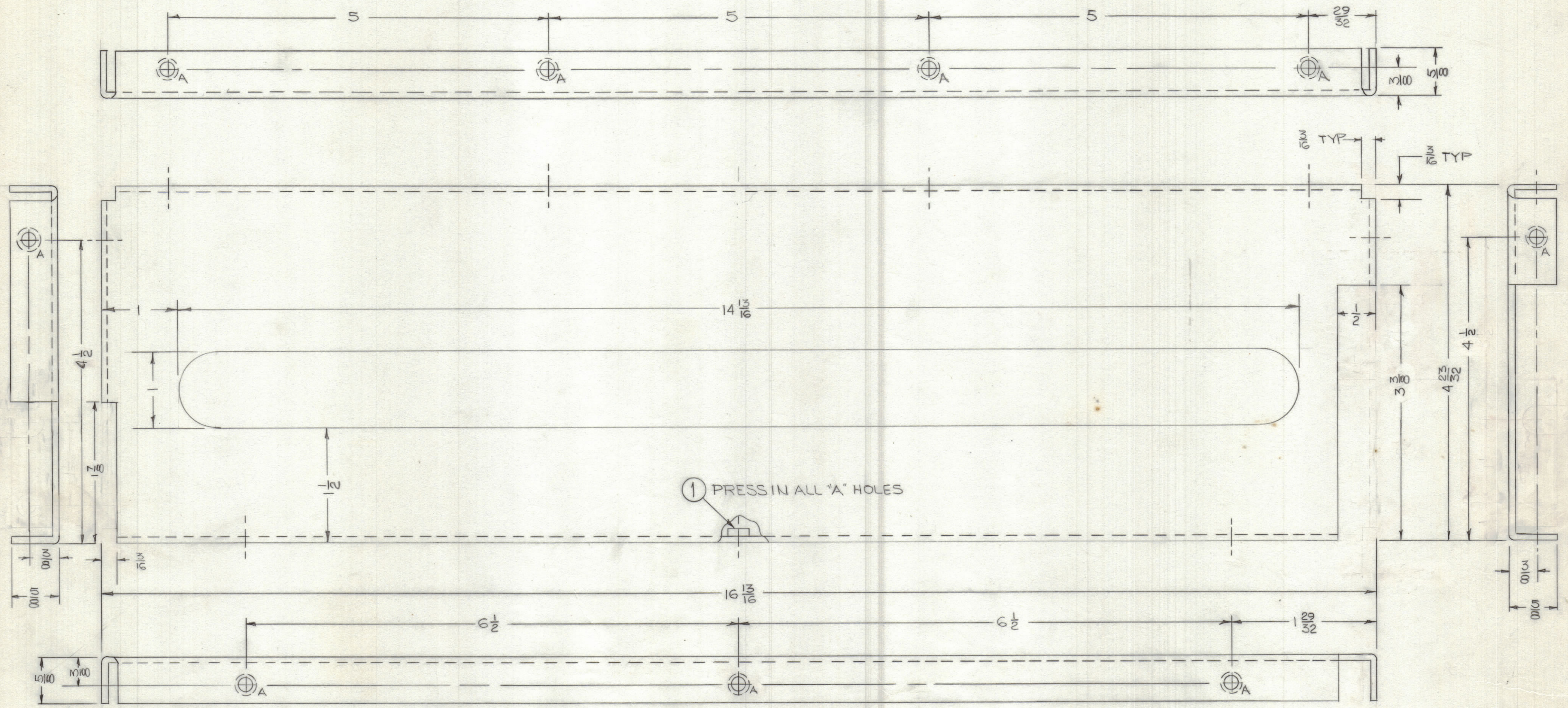


REVISIONS						
ZONE	LTR	DESCRIPTION	DATE	E.M.N.NO	DRAFT	CHKD APPD
	X1	MODIFIED SIDES	11-7-77		PH	
	Ø	ORIGINAL RELEASE FOR PRODUCTION	1-7-80	XU	MAC	SD

MARK TMC PART NUMBER
1/8 HIGH GOTHIC WITH LATEST
REVISION LETTER ON REAR OF PANEL



1 PRESS IN ALL "A" HOLES

HOLE	QTY	DESCRIPTION
A	9	.191-.194

- UNLESS OTHERWISE SPECIFIED:
- USE MATERIAL THICKNESS FOR MAXIMUM RADIUS ON ALL BENDS.
 - ALL ANGULAR BENDS 90 DEGREES.
 - REMOVE ALL BURRS AND SHARP EDGES.
 - MOUNT INSERTS AFTER FINISHING.

QTY / UNIT	MODEL USED ON	ASS'Y NO.
1	RCST-1	AX5224
1	RCST-1	AX5223

APPLICATION

CODE

NOTICE TO PERSONS RECEIVING THIS DRAWING

THE TECHNICAL MATERIEL CORPORATION claims proprietary right in the material disclosed hereon. This drawing is issued in confidence for engineering information only and may not be reproduced or used to manufacture anything shown hereon without permission from THE TECHNICAL MATERIEL CORPORATION to the user. This drawing is loaned for mutual assistance and is subject to recall at any time.

UNLESS OTHERWISE SPECIFIED DIMENSIONS ARE IN INCHES AND INCLUDE CHEMICALLY APPLIED OR PLATED FINISHES

TOLERANCES ON

DECIMALS	FRACTIONS
.X ± .05	± 1/64
.XX ± .01	ANGLES
.XXX ± .005	± 0° -30'

MATERIAL .080 THK ALUM
5052-H32

FINISH S404
IRIDITE

II	I	NT129-632-4	NUT, ROUND
QTY. REQ.	ITEM	PART NO.	DESCRIPTION
			SYMBOL
LIST OF MATERIAL			
FINAL APPROVAL		DATE	THE TECHNICAL MATERIEL CORP. MAMARONECK, NEW YORK PLATE, DIVIDER
MECH. DES.		DATE	
ELECT. DES.		DATE	
CHECKED		DATE	
DRAWN		DATE	
PH		10-12-77	
SIZE	CODE IDENT.NO.	DWG NO.	ISSUE
C	82679	MSG853	Ø
SCALE	FULL	SHEET	OF

MSG853