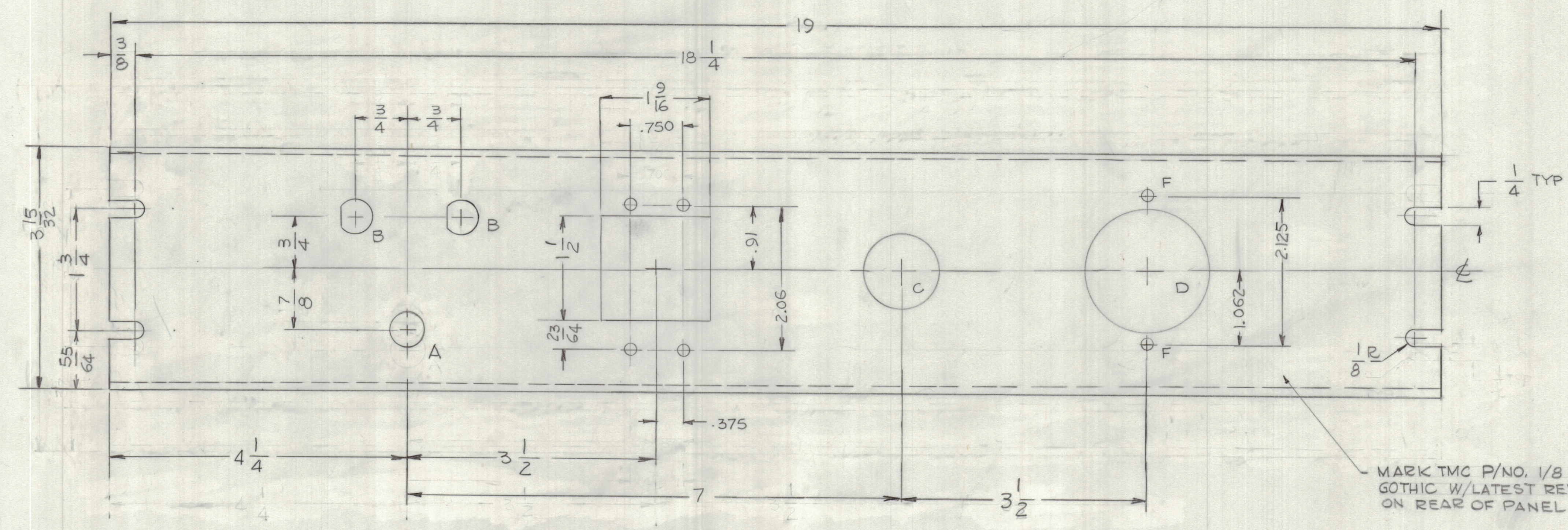
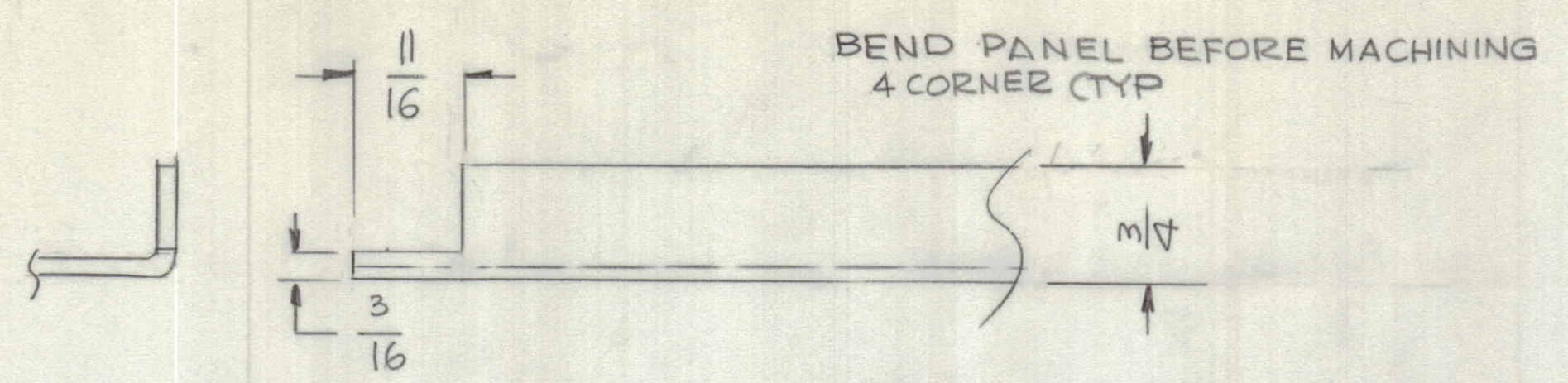


REVISIONS					
E.M.N.NO	DRAFT	CHKD	ZONE	LTR	
~	SK				
DESCRIPTION				DATE	APPROVED
ORIGINAL RELEASE FOR PRODUCTION				APR 24 1978	*



- HOLE:
- A - 1/2 DIA 1 REQ.
 - B - SEE DETAIL 2 REQ.
 - C - 1 1/16 DIA 1 REQ.
 - D - 1 3/4 DIA 1 REQ.
 - E - 1/4 DIA 4 REQ.
 - F - 11/64 DIA 6 REQ.

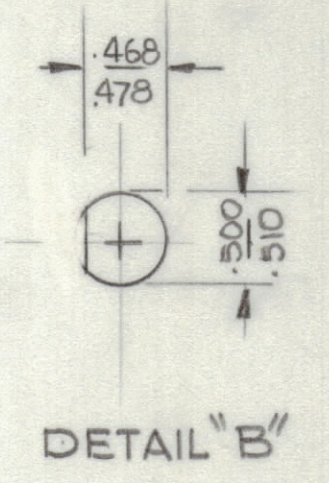
MACHINING:

1. MILL ALL EDGES.
2. HOLES MUST BE DRILLED, UNLESS OTHERWISE SPECIFIED.
3. LATERAL BOW OF PANEL MUST BE KEPT TO .031 TOLERANCE.
4. PANEL MUST BE FREE OF ALL MACHINING MARKS, GOUGES AND SCRATCHES. IF NECESSARY, SAND FRONT OF PANEL WITH NO. 120 GRIT SANDPAPER.

FINISH NOTES:

1. S404 - IRIDITE 14-2 AL-COAT.
2. S114 - ZINC CHROMATE PRIMER } FRONT AND
3. S115 - SMOOTH GRAY ENAMEL } EDGES ONLY

OR
PRIME AND PAINT PER CUSTOMER'S SPECIFICATIONS



1	TR-1000J	
QTY / UNIT	MODEL USED ON	ASS'Y NO.
APPLICATION		
CODE		
<small>NOTICE TO PERSONS RECEIVING THIS DRAWING</small> <small>THE TECHNICAL MATERIEL CORPORATION claims proprietary right in the material disclosed hereon. This drawing is issued in confidence for engineering information only and may not be reproduced or used to manufacture anything shown hereon without permission from THE TECHNICAL MATERIEL CORPORATION to the user. This drawing is loaned for mutual assistance and is subject to recall at any time.</small>		

REF: LD3101

QTY. REQ.	ITEM	PART NO.	DESCRIPTION	SYMBOL
LIST OF MATERIAL				
FINAL APPROVAL		DATE	THE TECHNICAL MATERIEL CORP.	
MECH. DES.		DATE	MAMARONECK, NEW YORK	
ELECT. DES.		DATE	PANEL, FRONT	
CHECKED		DATE	CIRCUIT BREAKER	
DRAWN		DATE	SIZE	CODE IDENT NO. DWG NO.
G.D.L.		3-16-78	D	82679 MS 6873
MATERIAL 1/8 THK ALUM 5052-H32			SCALE 1:1	SHEET OF
FINISH SEE NOTE				