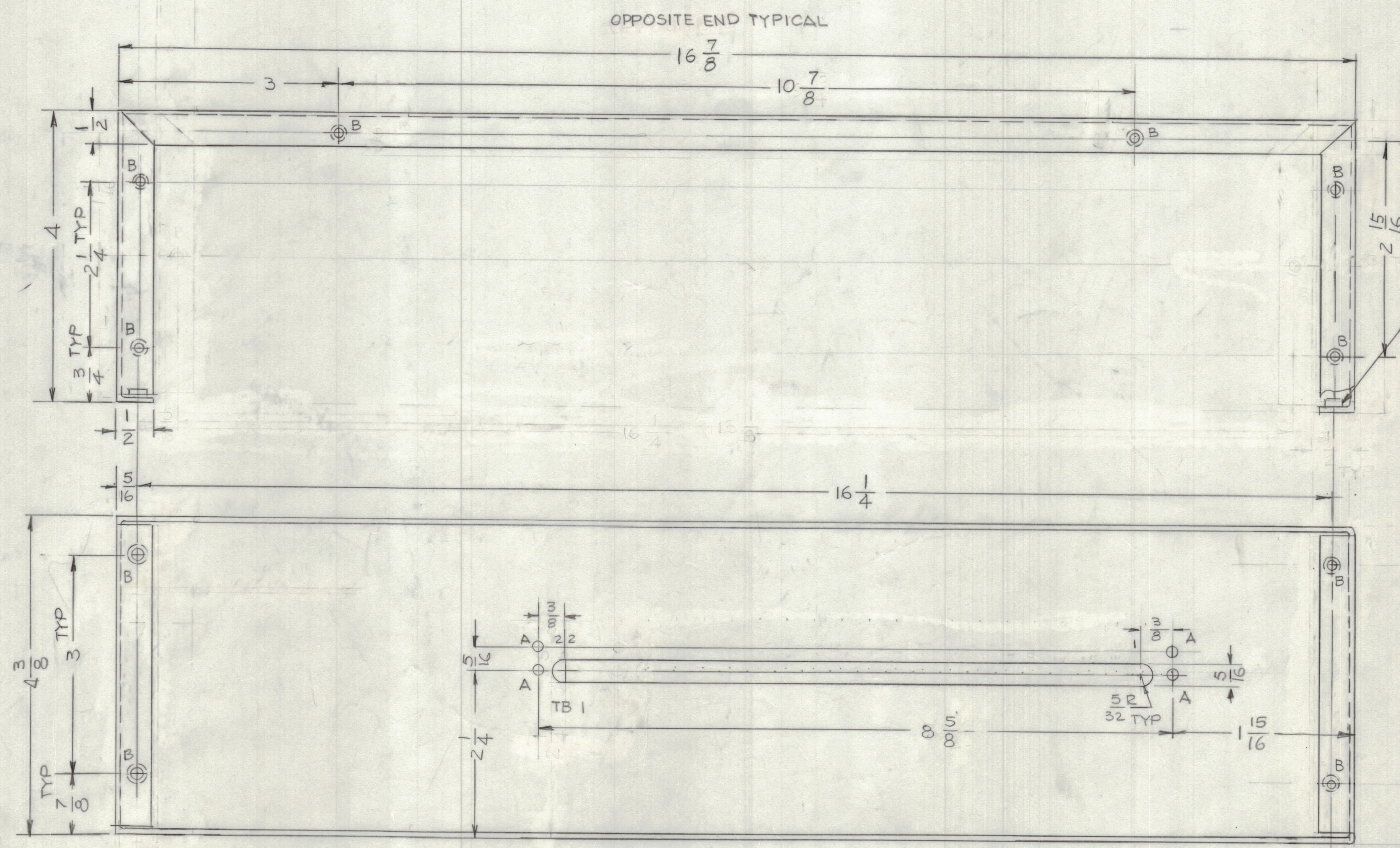


REVISIONS							
E.M.N.O.	DRAFT	CHKD	ZONE	LTR	DESCRIPTION	DATE	APPROVED
-	GDL	WJB			ORIGINAL RELEASE FOR PRODUCTION	7-7-78	#
21701	GDL		BG	A	DIM 1/2 ADD, NOTE 'OPPOSITE END TYP ADD' 'B' HOLE WAS 12, ITEM 1 WA 12	8-3-78	



HOLES -
 A - 9/64 DIA 4 REQ.
 B - .191-.194 DIA 16 REQ.

UNLESS OTHERWISE SPECIFIED:
 1. USE MATERIAL THICKNESS FOR MAXIMUM RADIUS ON ALL BENDS.
 2. ALL ANGULAR BENDS 90 DEGREES.
 3. REMOVE ALL BURRS AND SHARP EDGES.
 4. MOUNT INSERTS AFTER FINISHING.

QTY. REQ.	ITEM	PART NO.	DESCRIPTION	SYMBOL
16	1	NT129-06324	NUT, ROUND SWAGE	B

LIST OF MATERIAL				
FINAL APPROVAL	DATE	THE TECHNICAL MATERIEL CORP. MAMARONECK, NEW YORK		
MECH. DES.	DATE	WRAPAROUND		
ELECT. DES.	DATE			
CHECKED	DATE			
DRAWN	DATE			
SIZE	CODE	IDENT NO.	DWG NO.	ISSUE
D	82679		MS 6896	A
SCALE				SHEET OF

QTY / UNIT	MODEL USED ON	ASSY NO.
1	AX 789	
APPLICATION		
CODE		
NOTICE TO PERSONS RECEIVING THIS DRAWING		
THE TECHNICAL MATERIEL CORPORATION claims proprietary right in the material disclosed hereon. This drawing is issued in confidence for engineering information only and may not be reproduced or used to manufacture anything shown hereon without permission from THE TECHNICAL MATERIEL CORPORATION to the user. This drawing is loaned for mutual assistance and is subject to recall at any time.		

UNLESS OTHERWISE SPECIFIED
 DIMENSIONS ARE IN INCHES
 AND INCLUDE CHEMICALLY APPLIED
 OR PLATED FINISHES

TOLERANCES ON
 DECIMALS ± .05 FRACTIONS ± 1/64
 .XX ± .01 ANGLES ± 0° -30'
 .XXX ± .005

MATERIAL .063 THK
 ALUM-5052-H32

FINISH S404
 YEL. IRIDITE