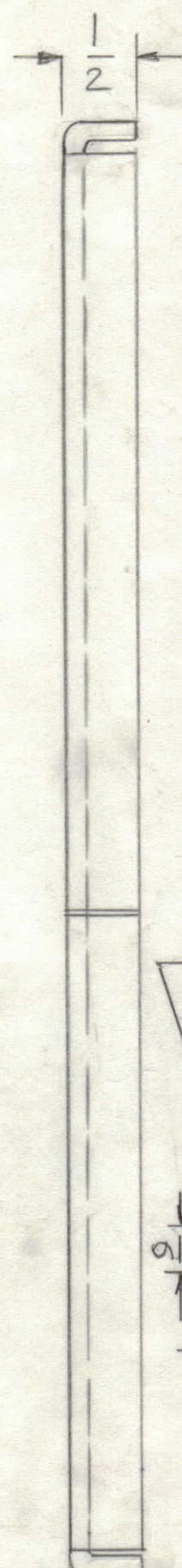
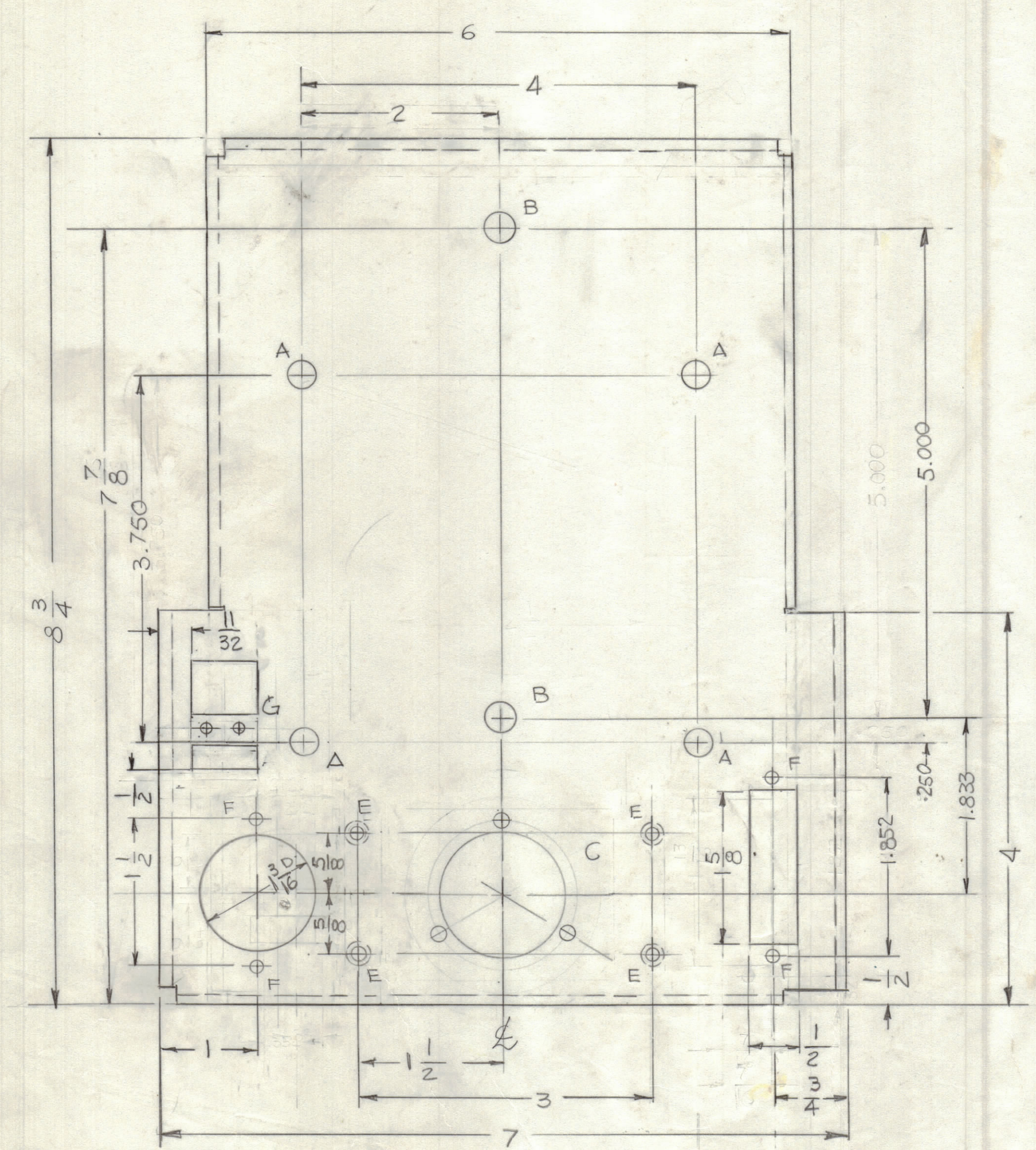


REVISIONS						
ZONE	LTR	DESCRIPTION	DATE	E.M.N.NO	DRAFT	CHKD APPD
	X	DETAIL "G" ADD.				
	Ø	ORIGINAL RELEASE FOR PRODUCTION	8-28-79		MAC	
	Δ	DIM'S 3/4 ADD & 7/16 DEL.	3-29-81	21881	GDL	

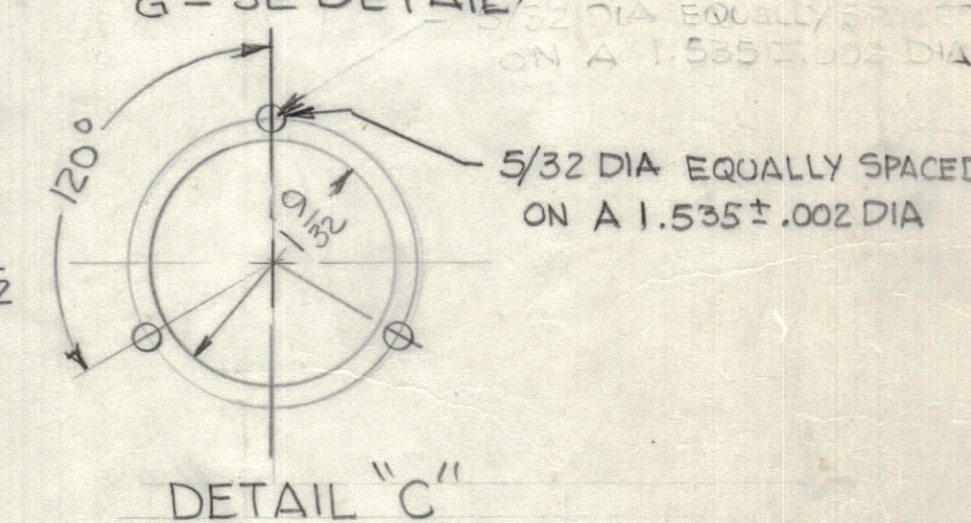
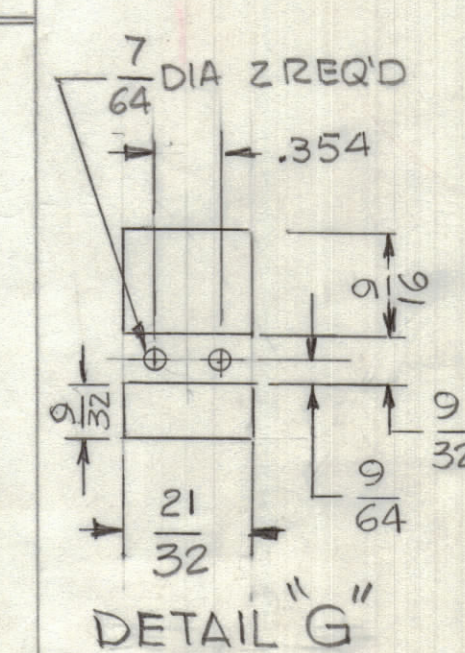


HOLES :

A- 9/32 DIA 4 REQ'D
 B- 5/16 DIA 2 REQ'D
 C- SEE DETAIL
 D- 7/64 DIA 2 REQ'D
 E- 1/8 DIA 4 REQ'D
 F- 5/32 DIA 4 REQ'D
 G- SEE DETAIL

5/32 DIA EQUALLY SPACED ON A 1.535 ± .002 DIA.

5/32 DIA EQUALLY SPACED ON A 1.535 ± .002 DIA.



QTY. REQ.	ITEM	PART NO.	DESCRIPTION	SYMBOL
4	2	NT 124-0632-4	NUT, ROUND	
2	1	BB 117-6	NYLON BEARING	

LIST OF MATERIAL				
FINAL APPROVAL		DATE	THE TECHNICAL MATERIEL CORP. MAMARONECK, NEW YORK BRACKET, MTG. MOTOR	
MECH. DES.		DATE		
ELECT. DES.		DATE		
CHECKED		DATE		
DRAWN		DATE		
SIZE	CODE IDENT. NO.	DWG NO.	ISSUE	
C	82679	MS6898	Δ	
SCALE 1:1			SHEET OF	

- UNLESS OTHERWISE SPECIFIED:
- USE MATERIAL THICKNESS FOR MAXIMUM RADIUS ON ALL BENDS.
 - ALL ANGULAR BENDS 90 DEGREES.
 - REMOVE ALL BURRS AND SHARP EDGES.

QTY / UNIT	MODEL USED ON	ASS'Y NO.
1	MFTA-10K/J (400Hz)	AS166
APPLICATION		
CODE		

NOTICE TO PERSONS RECEIVING THIS DRAWING

THE TECHNICAL MATERIEL CORPORATION claims proprietary right in the material disclosed hereon. This drawing is issued in confidence for engineering information only and may not be reproduced or used to manufacture anything shown hereon without permission from THE TECHNICAL MATERIEL CORPORATION to the user. This drawing is loaned for mutual assistance and is subject to recall at any time.

UNLESS OTHERWISE SPECIFIED DIMENSIONS ARE IN INCHES AND INCLUDE CHEMICALLY APPLIED OR PLATED FINISHES

TOLERANCES ON

DECIMALS	FRACTIONS
.X ± .05	± 1/64
.XX ± .01	ANGLES
.XXX ± .005	± 0° -30'

MATERIAL 1/8 THK ALUM AL ALLOY 5052-H32

FINISH 5404 YEL. IRIDITE