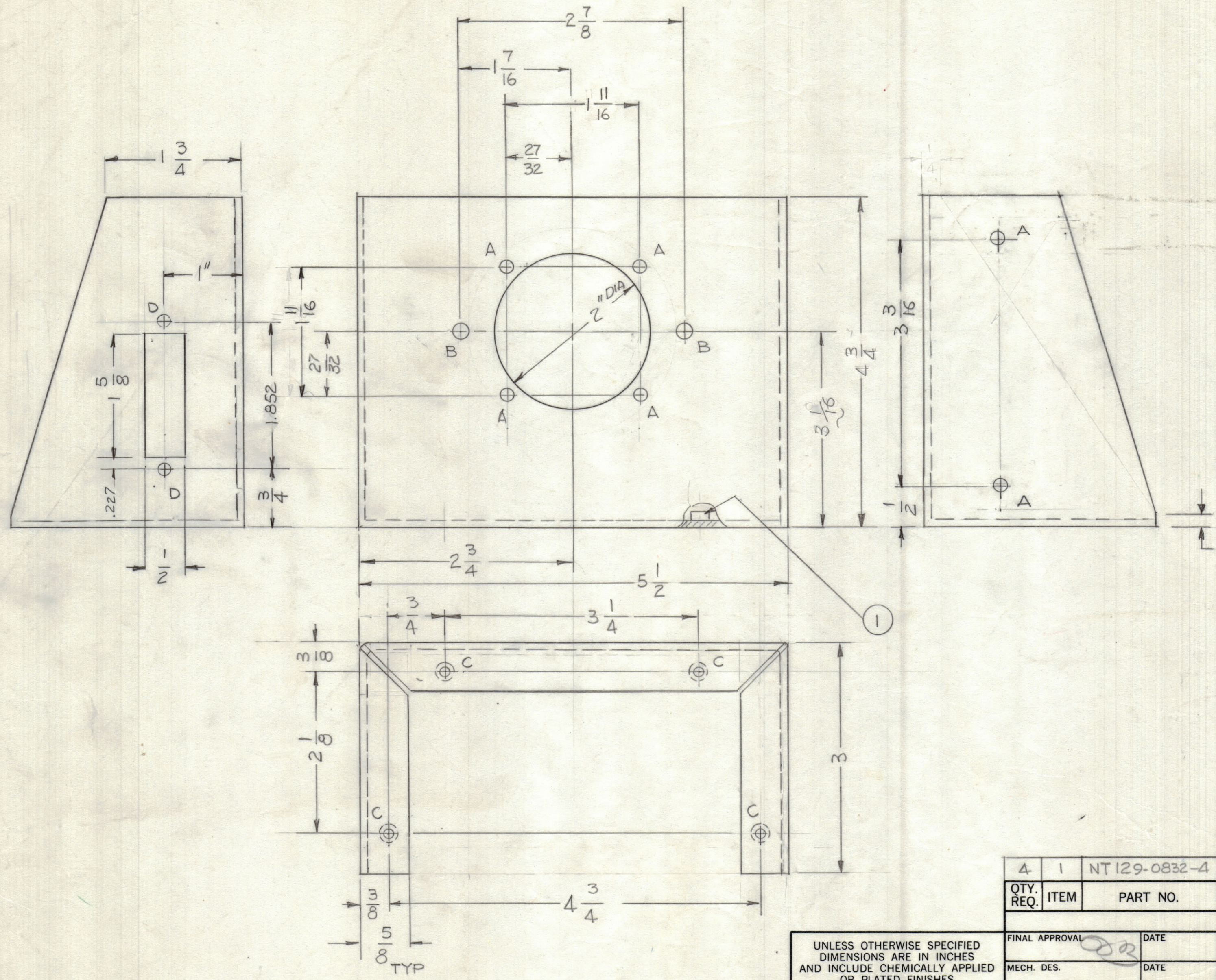


REVISIONS							
ZONE	LTR	DESCRIPTION	DATE	E.M.N.NO	DRAFT	CHKD	APPD
	X1	4 3/4 WAS 4 1/4 - 3 1/16 WA 2 9/16	8-27-78		GDL		
	Ø	ORIGINAL RELEASE FOR PRODUCTION	9-20-78		MAC		FB



HOLES  
 A - 11/64 DIA. 6 REQ'D  
 B - 13/64 DIA. 2 REQ'D  
 C - .221 - .224 DIA 4 REQ'D  
 D - 5/32 DIA 2 REQ'D

- UNLESS OTHERWISE SPECIFIED:
- USE MATERIAL THICKNESS FOR MAXIMUM RADIUS ON ALL BENDS.
  - ALL ANGULAR BENDS 90 DEGREES.
  - REMOVE ALL BURRS AND SHARP EDGES.
  - MOUNT INSERTS AFTER FINISHING.

1	MFT-10K/3	AX5241
QTY / UNIT	MODEL USED ON	ASS'Y NO.
APPLICATION		
CODE		

NOTICE TO PERSONS RECEIVING THIS DRAWING  
 THE TECHNICAL MATERIEL CORPORATION claims proprietary right in the material disclosed herein. This drawing is issued in confidence for engineering information only and may not be reproduced or used to manufacture anything shown herein without permission from THE TECHNICAL MATERIEL CORPORATION to the user. This drawing is loaned for mutual assistance and is subject to recall at any time.

UNLESS OTHERWISE SPECIFIED DIMENSIONS ARE IN INCHES AND INCLUDE CHEMICALLY APPLIED OR PLATED FINISHES

TOLERANCES ON  
 DECIMALS .X ± .05  
 .XX ± .01  
 .XXX ± .005  
 FRACTIONS ± 1/64  
 ANGLES ± 0° -30'

MATERIAL .081 THK  
 AWM. 5052-H32  
 FINISH 3404  
 YEL IRIDITE

QTY. REQ.	ITEM	PART NO.	DESCRIPTION	SYMBOL
4	1	NT129-0832-4	NUT, ROUND	C

LIST OF MATERIAL

THE TECHNICAL MATERIEL CORP.  
 MAMARONECK, NEW YORK

BRACKET MTG. SW

FINAL APPROVAL	DATE	THE TECHNICAL MATERIEL CORP. MAMARONECK, NEW YORK
MECH. DES.	DATE	
ELECT. DES.	DATE	
CHECKED	DATE	
DRAWN	DATE	
G.D.L.	8-1-78	

SIZE	CODE IDENT. NO.	DWG NO.	ISSUE
C	82679	MS 6941	Ø
SCALE	SHEET		OF

MS 6941