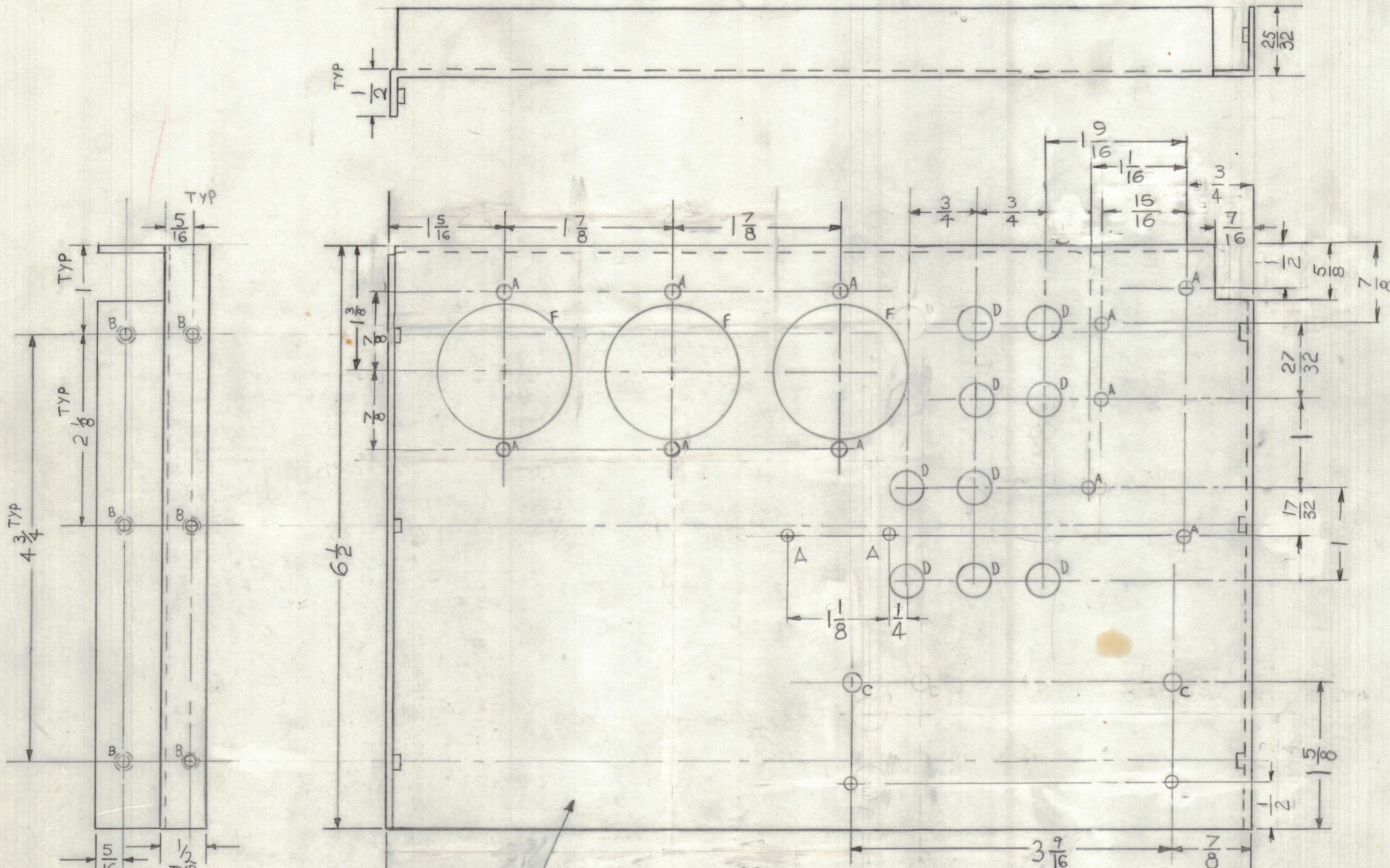


REVISIONS						
ZONE	LTR	DESCRIPTION	DATE	E.M.N.NO	DRAFT	CHKD APPD



- HOLE:
- A - 1/8 DIA 13 REQ'D
 - B - .191-.196 DIA 6 REQ'D
 - C - 13/64 DIA 2 REQ'D
 - D - 3/8 DIA 9 REQ'D
 - E - 9/64 DIA 2 REQ'D
 - F - 1 1/2 DIA 3 REQ'D

MARK TMC P/NO 1/8 HIGH
GOthic W/LATEST REV.
LETTER

QTY. REQ.	ITEM	PART NO.	DESCRIPTION	SYMBOL
6	I	NT 129-632-4	NUT ROUND	B

LIST OF MATERIAL				
THE TECHNICAL MATERIEL CORP. MAMARONECK, NEW YORK				
PLATE MTG PWR SUPPLY				
FINAL APPROVAL	DATE			
MECH. DES.	DATE			
ELECT. DES.	DATE			
CHECKED	DATE			
DRAWN J.C.A.	DATE 5-29-80			
SIZE C	CODE IDENT.NO 82679	DWG NO. MS 6999	ISSUE	
SCALE 1:1	SHEET		OF	

QTY / UNIT	MODEL USED ON	ASS'Y NO.
	MFO-1	
APPLICATION		
	CODE	
<small>NOTICE TO PERSONS RECEIVING THIS DRAWING</small> THE TECHNICAL MATERIEL CORPORATION claims proprietary right in the material disclosed hereon. This drawing is issued in confidence for engineering information only and may not be reproduced or used to manufacture anything shown hereon without permission from THE TECHNICAL MATERIEL CORPORATION to the user. This drawing is loaned for mutual assistance and is subject to recall at any time.		
MATERIAL .063 THK ALUM 5052-H32 FINISH S404 YEL IRIDITE		