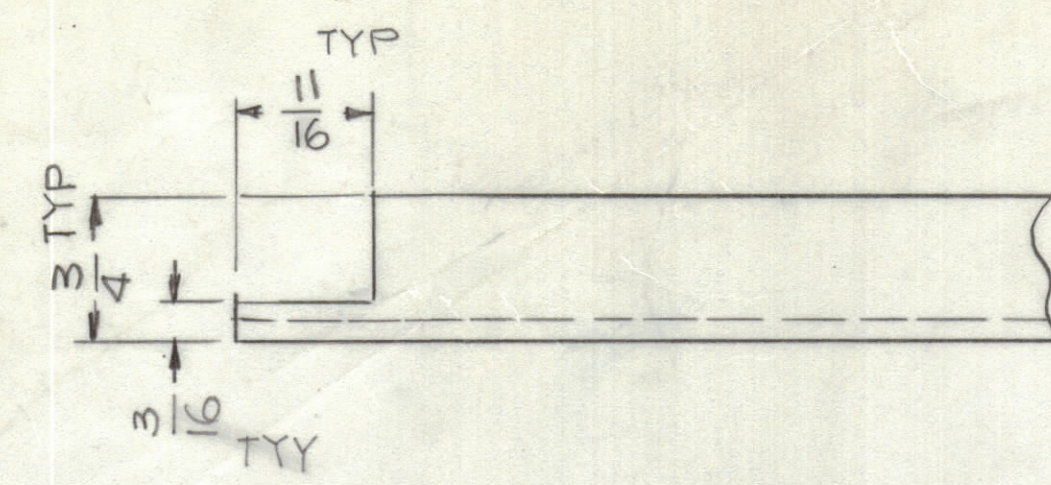
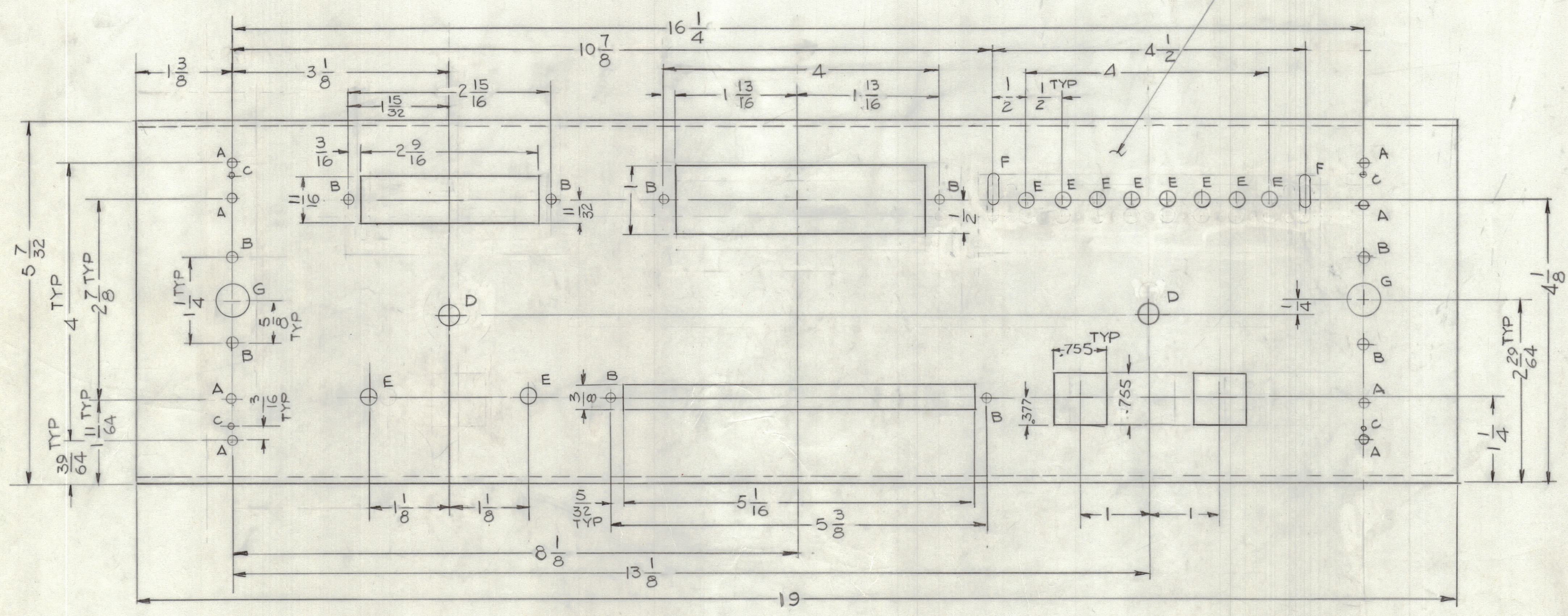


REVISIONS				DATE	APPROVED
E.M.NQ	DRAFT	CHKD	ZONE	LTR	DESCRIPTION



MACHINE CORNERS AFTER
BANDING

MARK TMC P/NO. 1/8 HIGH
GOTHIC W/LATEST REV. LETTER ON REAR



HOLE	
A - 13/64 DIA	8 REQ
B - 11/64 DIA	10 REQ
C - 3/32 DIA	4 REQ
D - 5/16 DIA	2 REQ
E - 1/4 DIA	10 REQ
F - 3/16 X 1/2 SLOT	2 REQ

MACHINING:

- MILL ALL EDGES.
- HOLES MUST BE DRILLED, UNLESS OTHERWISE SPECIFIED.
- LATERAL BOW OF PANEL MUST BE KEPT TO .031 TOLERANCE.
- PANEL MUST BE FREE OF ALL MACHINING MARKS, GOUGES AND SCRATCHES. IF NECESSARY, SAND FRONT OF PANEL WITH NO. 120 GRIT SANDPAPER.

FINISH NOTES:

- SNOW - IRIDITE 14-2 AL-COAT.
- S114 - ZINC CHROMATE PRIMER } FRONT AND EDGES ONLY
- MIL-E-10509 TYPE 3 CL.2 LIGHT GRAY SEMI GLASS BAKING ENAMEL -

1.812
1.212
2.625

9.500
1.375
2.125

1	SME-5/CB	
QTY / UNIT	MODEL USED ON	ASS'Y NO.
	APPLICATION	
	CODE	
<small>NOTICE TO PERSONS RECEIVING THIS DRAWING</small> <small>THE TECHNICAL MATERIEL CORPORATION claims proprietary right in the material disclosed hereon. This drawing is issued in confidence for engineering information only and may not be reproduced or used to manufacture anything shown hereon without permission from THE TECHNICAL MATERIEL CORPORATION to the user. This drawing is loaned for mutual assistance and is subject to recall at any time.</small>		

REF:LD

UNLESS OTHERWISE SPECIFIED DIMENSIONS ARE IN INCHES AND INCLUDE CHEMICALLY APPLIED OR PLATED FINISHES

TOLERANCES ON

DECIMALS	FRACTIONS
.X ± .05	± 1/64
.XX ± .01	ANGLES
.XXX ± .005	± 0° -30°

MATERIAL 1/8 THK ALUM 5052-H32

FINISH SEE NOTE

QTY. REQ.	ITEM	PART NO.	DESCRIPTION	SYMBOL
LIST OF MATERIAL				
THE TECHNICAL MATERIEL CORP. MAMARONECK, NEW YORK				
PANEL, FRONT				
FINAL APPROVAL		DATE		
MECH. DES.		DATE		
ELECT. DES.		DATE		
CHECKED		DATE		
DRAWN		DATE		
GDL		11-13-80		
SIZE	CODE	IDENT NO.	DWG NO.	ISSUE
D	82679		MS 7042	
SCALE 1:1		SHEET OF		