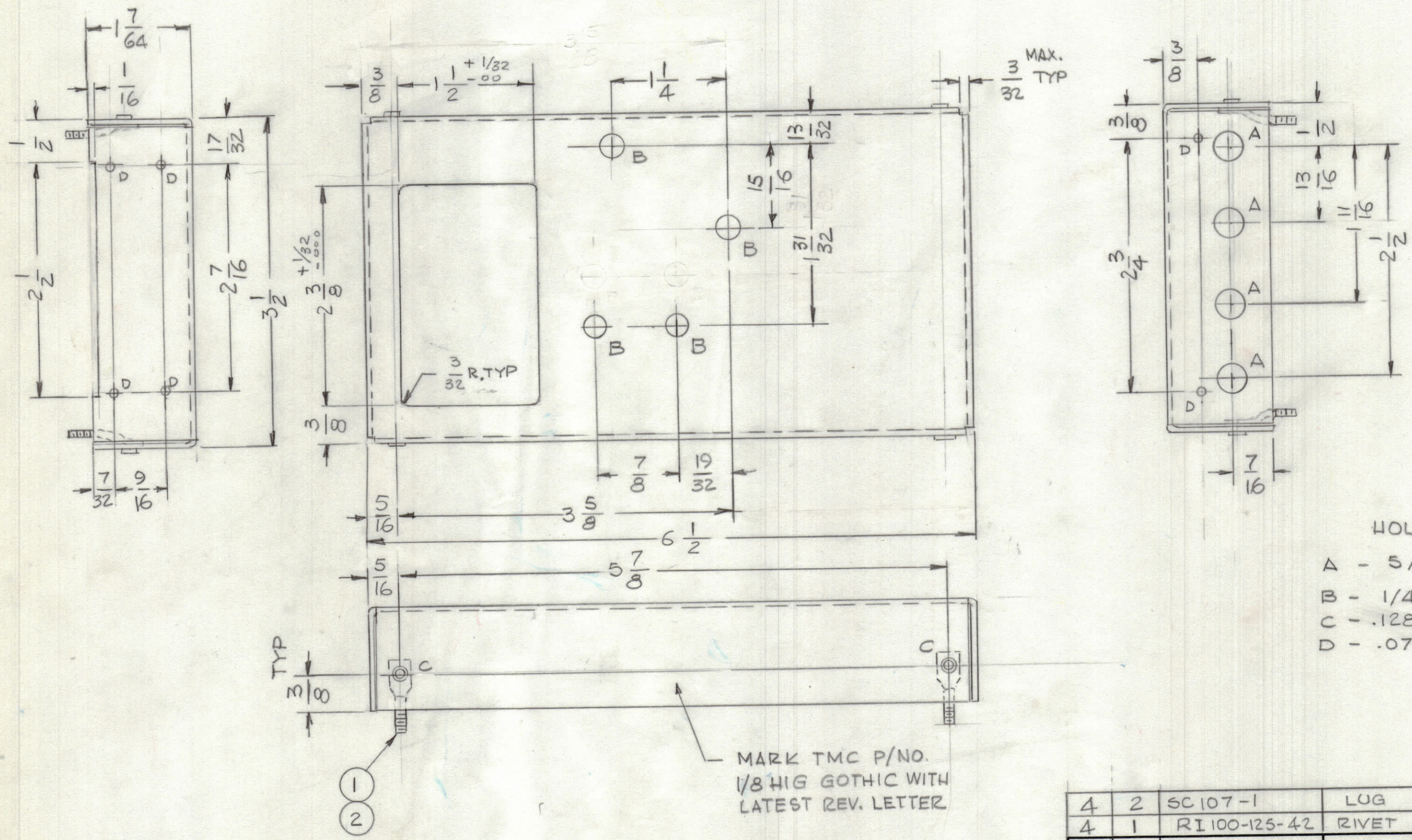


REVISIONS						
ZONE	LTR	DESCRIPTION	DATE	E.M.N.NO	DRAFT	CHKD APPD
	Ø	ORIGINAL RELEASE FOR PRODUCTION	2-18-82			



HOLES -

A - 5/16 DIA	4 REQ'D
B - 1/4 DIA	4 "
C - .128 DIA	4 "
D - .076 DIA	6 "

UNLESS OTHERWISE SPECIFIED:

1. USE MATERIAL THICKNESS FOR MAXIMUM RADIUS ON ALL BENDS.
2. ALL ANGULAR BENDS 90 DEGREES.
3. REMOVE ALL BURRS AND SHARP EDGES.
4. MOUNT INSERTS AFTER FINISHING.

TTRR ( ) D	ASS'Y NO.
QTY / UNIT	MODEL USED ON
APPLICATION	
CODE	
NOTICE TO PERSONS RECEIVING THIS DRAWING THE TECHNICAL MATERIEL CORPORATION claims proprietary right in the material disclosed hereon. This drawing is issued in confidence for engineering information only and may not be reproduced or used to manufacture anything shown hereon without permission from THE TECHNICAL MATERIEL CORPORATION to the user. This drawing is loaned for mutual assistance and is subject to recall at any time.	

REF: LD10283

UNLESS OTHERWISE SPECIFIED DIMENSIONS ARE IN INCHES AND INCLUDE CHEMICALLY APPLIED OR PLATED FINISHES

TOLERANCES ON

DECIMALS	FRACTIONS
.X ± .05	± 1/64
.XX ± .01	ANGLES
.XXX ± .005	± 0° .30'

MATERIAL .051 THK ALUM. 5052-432

FINISH S404 YEL. IRIDITE

FINAL APPROVAL	DATE	<b>THE TECHNICAL MATERIEL CORP.</b> MAMARONECK, NEW YORK  <b>COVER PC. BD.</b>	ISSUE	
MECH. DES.	DATE		SIZE CODE IDENT. NO. DWG. NO. <b>C 82679 MS 7071</b>	SHEET OF
ELECT. DES.	DATE			
CHECKED	DATE			
DRAWN	DATE	SCALE	1:1	