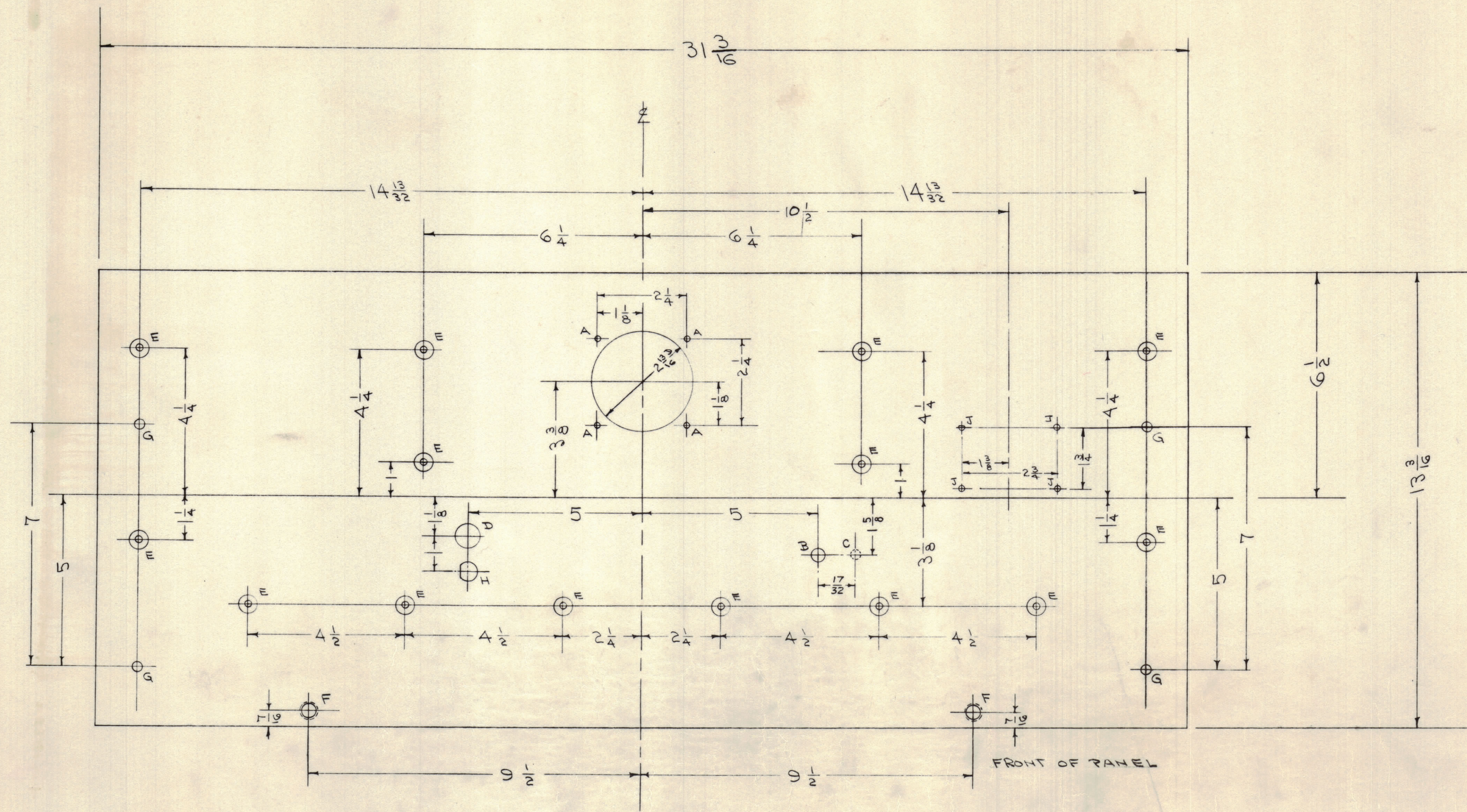


IF IT IS FOUND DESIRABLE TO CHANGE ANY TOLERANCE OR OTHER DETAIL SPECIFIED ON THIS DRAWING NOTIFY THE PURCHASER PROMPTLY.
 * MAXIMUM ALLOWABLE TOLERANCES HAVE BEEN DETERMINED AND DEVIATIONS WILL BE CAUSE FOR REJECTION.
 * REMOVE ALL BURRS AND SHARP EDGES

NOTICE TO PERSONS RECEIVING THIS DRAWING

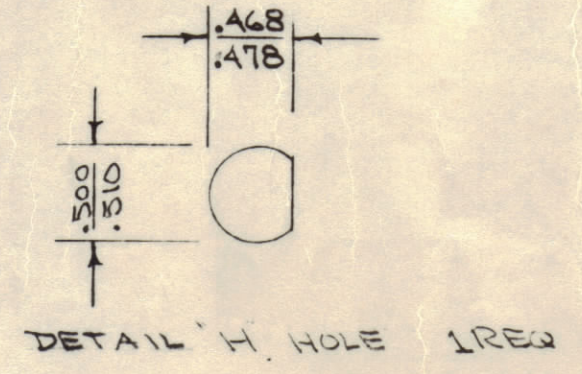
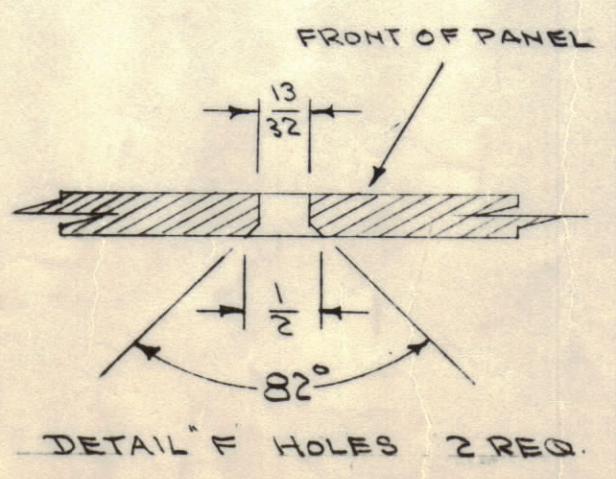
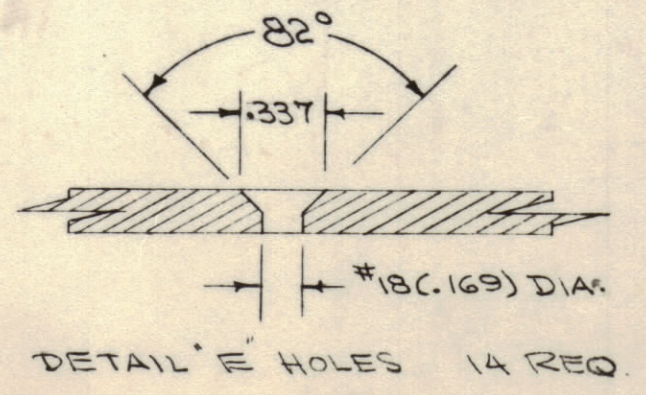
THE TECHNICAL MATERIEL CORPORATION claims proprietary right in the material disclosed herein. This drawing is issued in confidence for engineering information only and may not be reproduced or used to manufacture anything shown hereon without permission from THE TECHNICAL MATERIEL CORPORATION to the user. This drawing is loaned for mutual assistance and is subject to recall at any time.

Property of:
 THE TECHNICAL MATERIEL CORPORATION
 MAMARONECK, NEW YORK



- A - 5/32 (.156) DIA.
- B - 25/64 (.390) "
- C - 9/64 DIA. X 1/8 DEEP FROM REAR
- D - 45/64 (.703) DIA.
- G - 15/64 (.234) "
- J - #47 DRILL

- 4 HOLES REQ
- 1 " " "
 - 1 " " "
 - 1 " " "
 - 4 " " "
 - 4 " " "



NOTE - FINISH
 S-404 VEL. IRIODITE
 S-114 ZINC CHROMATE PRIMER
 S-115 SMOOTH GRAY ENAMEL
 OR PRIME & PAINT TO CUSTOMERS SPECIFICATION.

REF. DWG. - LD-238

REV	DESCRIPTION	DATE	BY	CHECKED	APP.
C	S-404 VEL IRIODITE WAS S-101 CAUSTIC DIP	12/16/35	1001	EMM	
B	S-101 CAUSTIC DIP	12/16/35	1001	EMM	
A	2 HOLES POSITION CHANGED	12/16/35	1001	EMM	
1	2 HOLES REVERSED	12/16/35	1001	EMM	

REQ PER UNIT	MODEL	PROJECT NO.	ASBY. NO.	DATE
1	RTM			12-16-35

REQ. ITEM	PART NO.	DESCRIPTION	SYMBOL
3/16 THICK		THE TECHNICAL MATERIEL CORP. MAMARONECK, NEW YORK	
STOCK SIZE		FRONT PANEL	
MATERIAL	WEIGHT PER PC.	RTM	
2A ST 3			
TYPE & TEMPER			
HEAT TREAT. SPEC.			
FINISH & SPEC. NO.			

MS-701 C