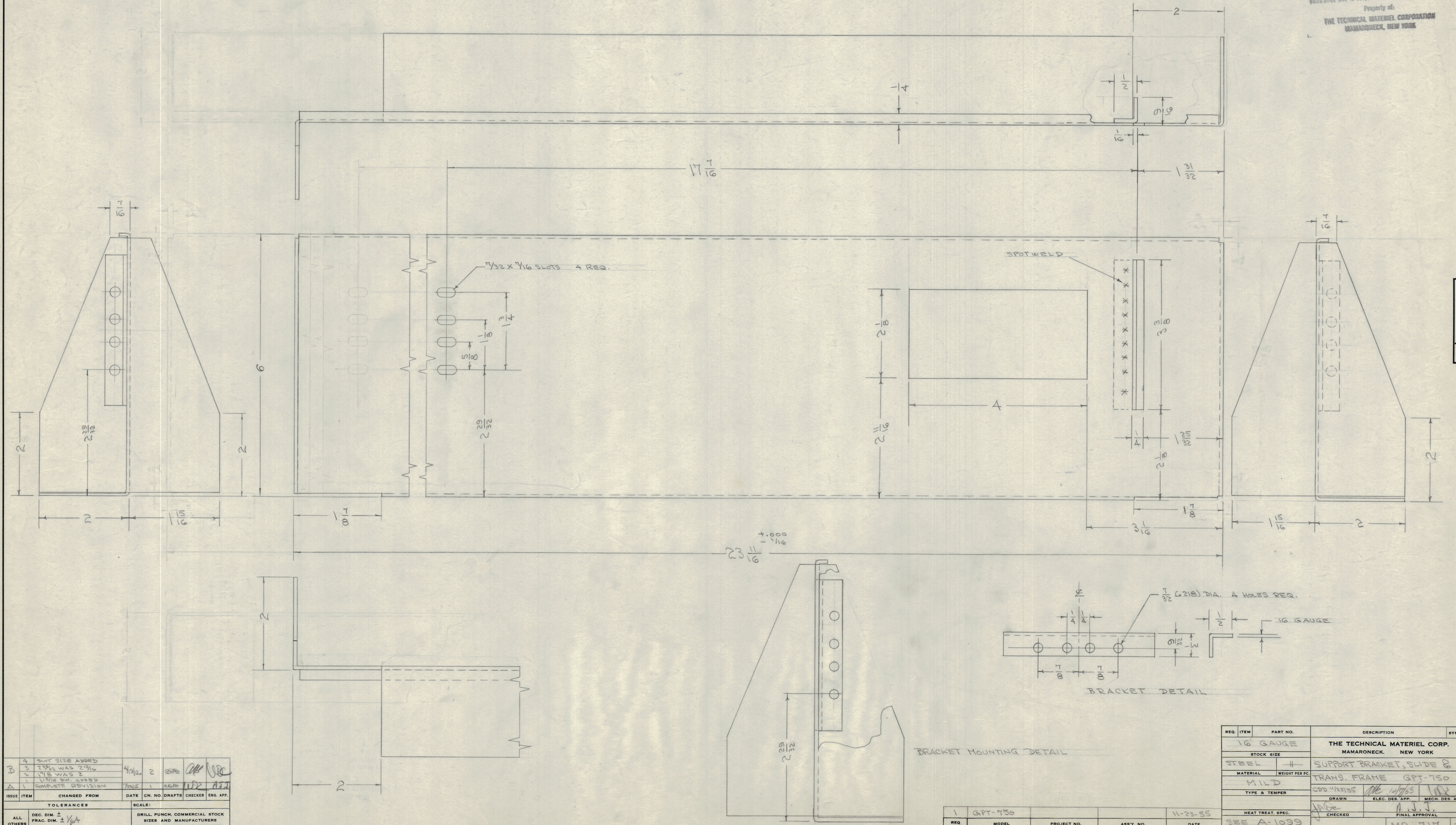


IF IT IS FOUND DESIRABLE TO CHANGE ANY TOLERANCE OR OTHER DETAIL SPECIFIED ON THIS DRAWING NOTIFY THE PURCHASER PROMPTLY.  
 MAXIMUM ALLOWABLE TOLERANCES HAVE BEEN DETERMINED AND DEVIATIONS WILL BE CAUSE FOR REJECTION. REMOVE ALL BURRS AND SHARP EDGES

**NOTICE TO PERSONS RECEIVING THIS DRAWING**  
 THE TECHNICAL MATERIEL CORPORATION claims property right in the material disclosed herein. This drawing is loaned in confidence for engineering information only and may not be reproduced or used to manufacture any thing shown herein without permission from THE TECHNICAL MATERIEL CORPORATION, 1011 10th St. N. This drawing is loaned for mutual convenience and is subject to recall at any time.  
 Property of:  
**THE TECHNICAL MATERIEL CORPORATION**  
 MAMARONECK, NEW YORK



MS-7117 B

4	SLOT SIZE ADDED				
3	2 1/32 WAS 2 1/16	4/30/55	2		
2	1 1/8 WAS 2				
1	1 1/8 DIM. ADDED				
A	COMPLETE REVISION				
ISSUE	ITEM	CHANGED FROM	DATE	CN. NO.	DRAFTS
					CHECKER
					ENG. APP.
TOLERANCES		SCALE:			
ALL DEC. DIM.	$\pm 1/32$	DRILL PUNCH, COMMERCIAL STOCK			
OTHERS ANGULAR DIM.	$\pm 1/64$	SIZES AND MANUFACTURERS TOLERANCES ARE NOT INCLUDED.			

1	GPT-750	PROJECT NO.	ASS'Y. NO.	11-23-55
REQ PER UNIT	MODEL	PROJECT NO.	ASS'Y. NO.	DATE
				USED ON

REQ. ITEM	PART NO.	DESCRIPTION	SYMBOL
1	1/16 GAUGE	THE TECHNICAL MATERIEL CORP. MAMARONECK, NEW YORK	
	STEEL	SUPPORT BRACKET, SLIDE B	
	MILD	TRANS. FRAME GPT-750	
	TYPE & TEMPER	CDW 1123155	11/17/55
	HEAT TREAT. SPEC.		
	FINISH & SPEC. NO.	SEE A-1099	
		DRAWN	ELEC. DES. APP.
		CHECKED	MECH. DES. APP.
		FINAL APPROVAL	