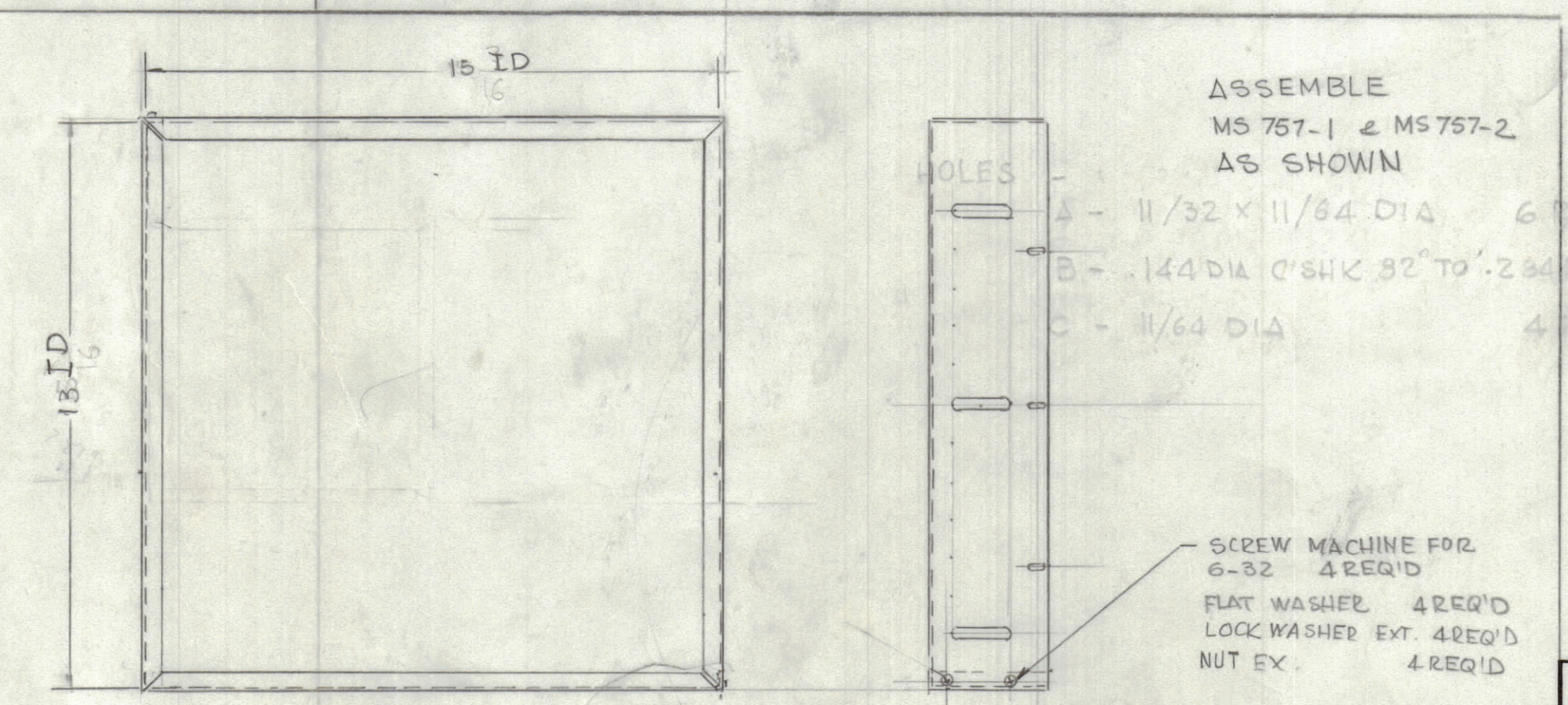
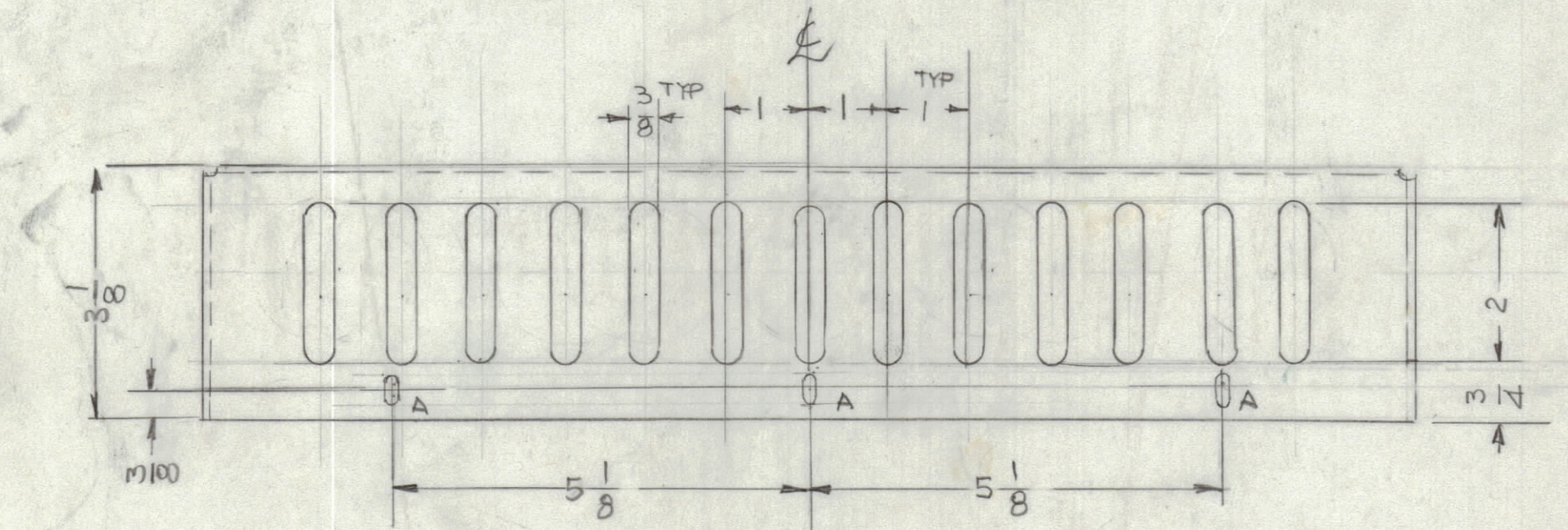
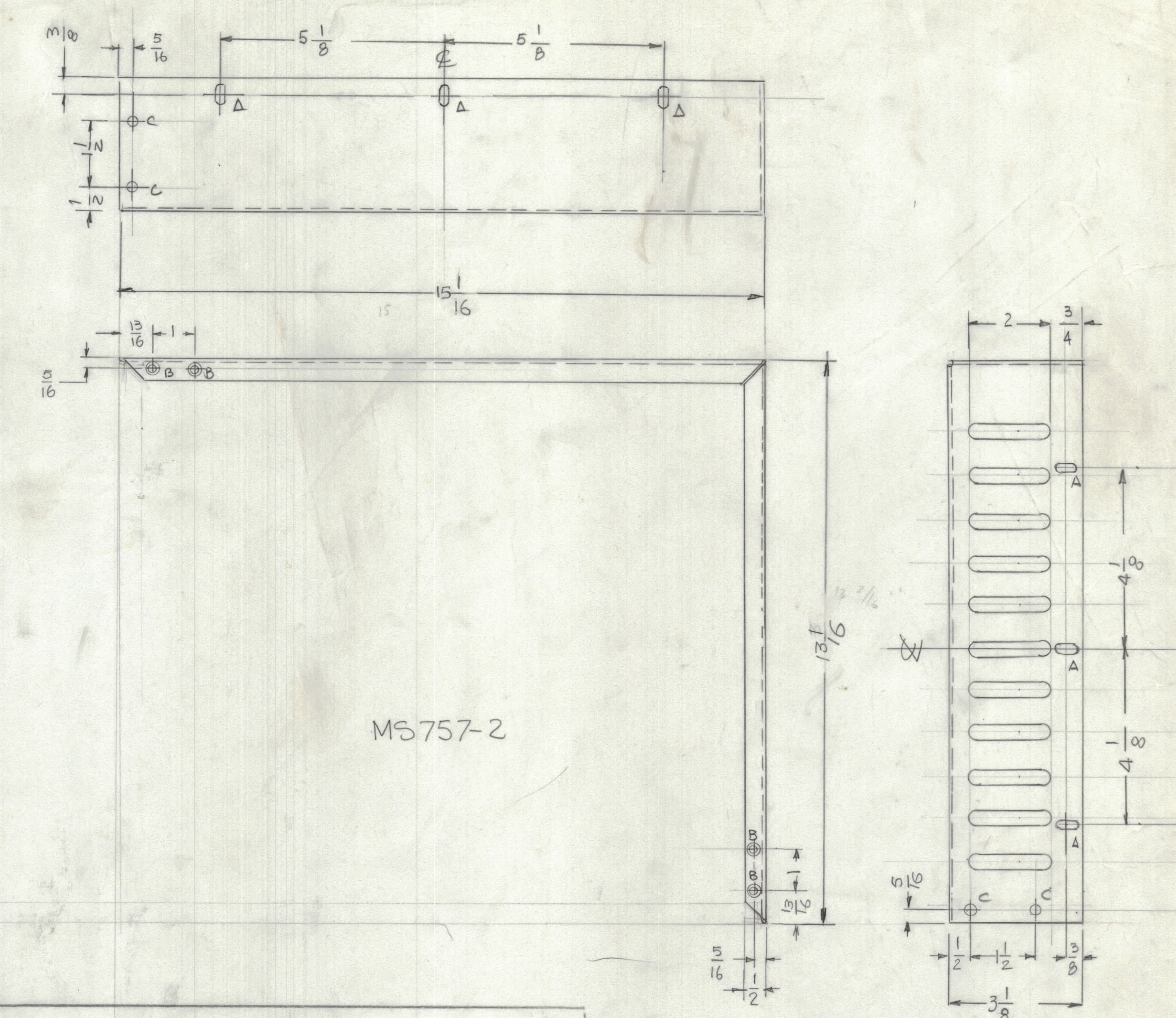
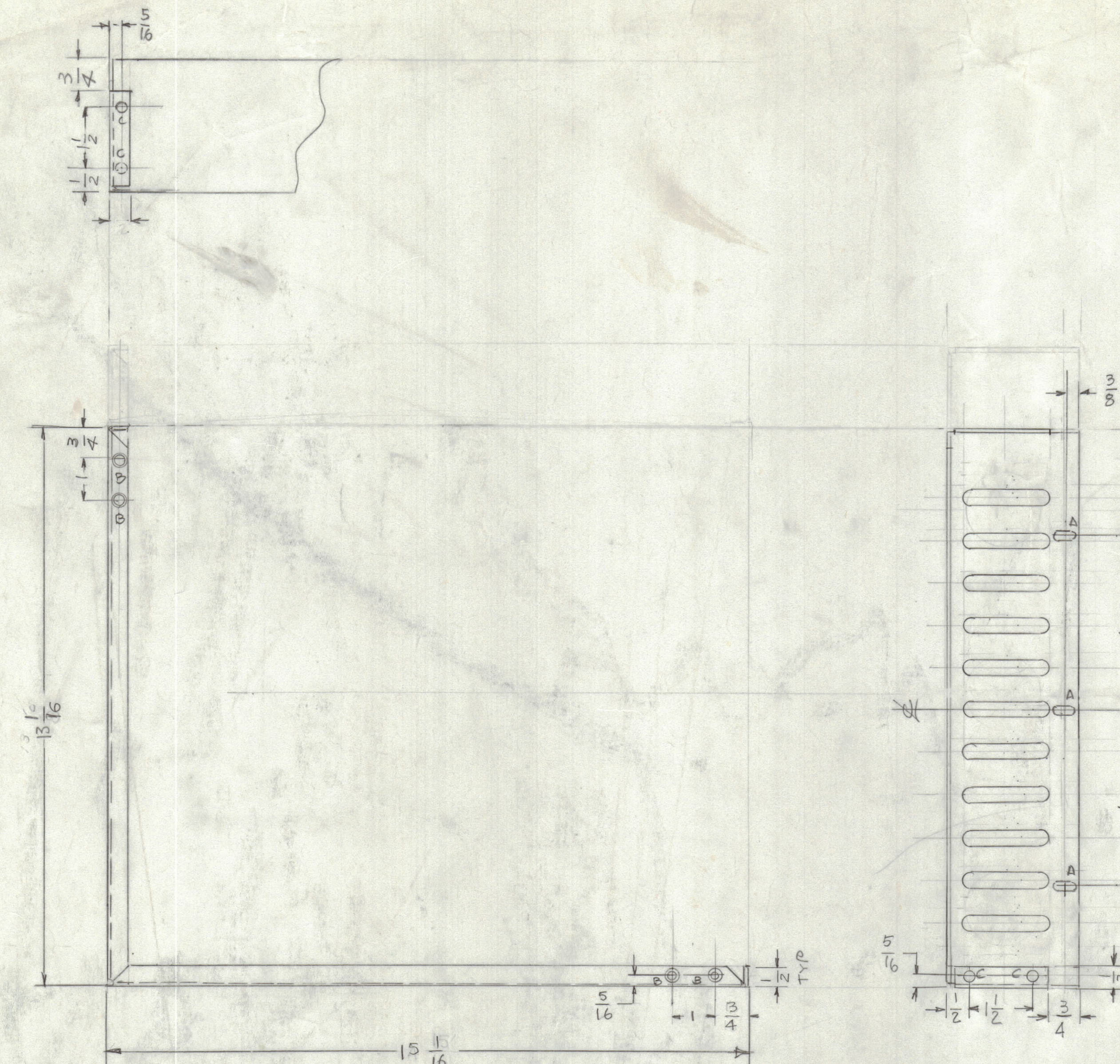


REVISIONS							
E.M. NO.	DRAFT	CHKD	ZONE	LTR	DESCRIPTION	DATE	APPROVED
	GDL			H	REDRAWN	6-27-84	



MS757-1

HOLES  
 A - 11/32 x 11/64 DIA 6 REQ'D  
 B - .144 DIA C'SHK 82 TO .284 DIA 4 REQ'D  
 C - 11/64 DIA 4 REQ'D

ASSEMBLE  
 MS 757-1 & MS 757-2  
 AS SHOWN

HOLES  
 A - 11/32 x 11/64 DIA 6 REQ'D  
 B - .144 DIA C'SHK 82 TO .284 DIA 4 REQ'D  
 C - 11/64 DIA 4 REQ'D

QTY / UNIT	MODEL USED ON	ASS'Y NO.
1	TER 3500-30	A 1223
1	TER 500-70	"
1	TER 3500-70	"
1	TER 500	"
1	TER 3500	"

UNLESS OTHERWISE SPECIFIED  
 DIMENSIONS ARE IN INCHES  
 AND INCLUDE CHEMICALLY APPLIED  
 OR PLATED FINISHES

TOLERANCES ON  
 DECIMALS FRACTIONS  
 .X ± .05 ± 1/64  
 .XX ± .01 ANGLES ± 0° -30'  
 .XXX ± .005

QTY. REQ.	ITEM	PART NO.	DESCRIPTION	SYMBOL	
LIST OF MATERIAL					
FINAL APPROVAL	DATE	THE TECHNICAL MATERIEL CORP. MAMARONECK, NEW YORK			
MECH. DES.	DATE	VENT TER SERIES			
ELECT. DES.	DATE				
CHECKED	DATE				
DRAWN	DATE				
GDL	6-7-84	SIZE	CODE IDENT NO.	DWG NO.	ISSUE
		D	82679	MS 757	H

APPLICATION

CODE

NOTICE TO PERSONS RECEIVING THIS DRAWING  
 THE TECHNICAL MATERIEL CORPORATION claims proprietary right in the material disclosed hereon.  
 This drawing is issued in confidence for engineering information only and may not be reproduced or used  
 to manufacture anything shown hereon without permission from THE TECHNICAL MATERIEL CORPORATION  
 to the user. This drawing is loaned for mutual assistance and is subject to recall at any time.

MATERIAL .051 THK  
 ALL - 5052 - H32  
 FINISH 3404  
 YEL IRIDITE

SCALE SHEET OF