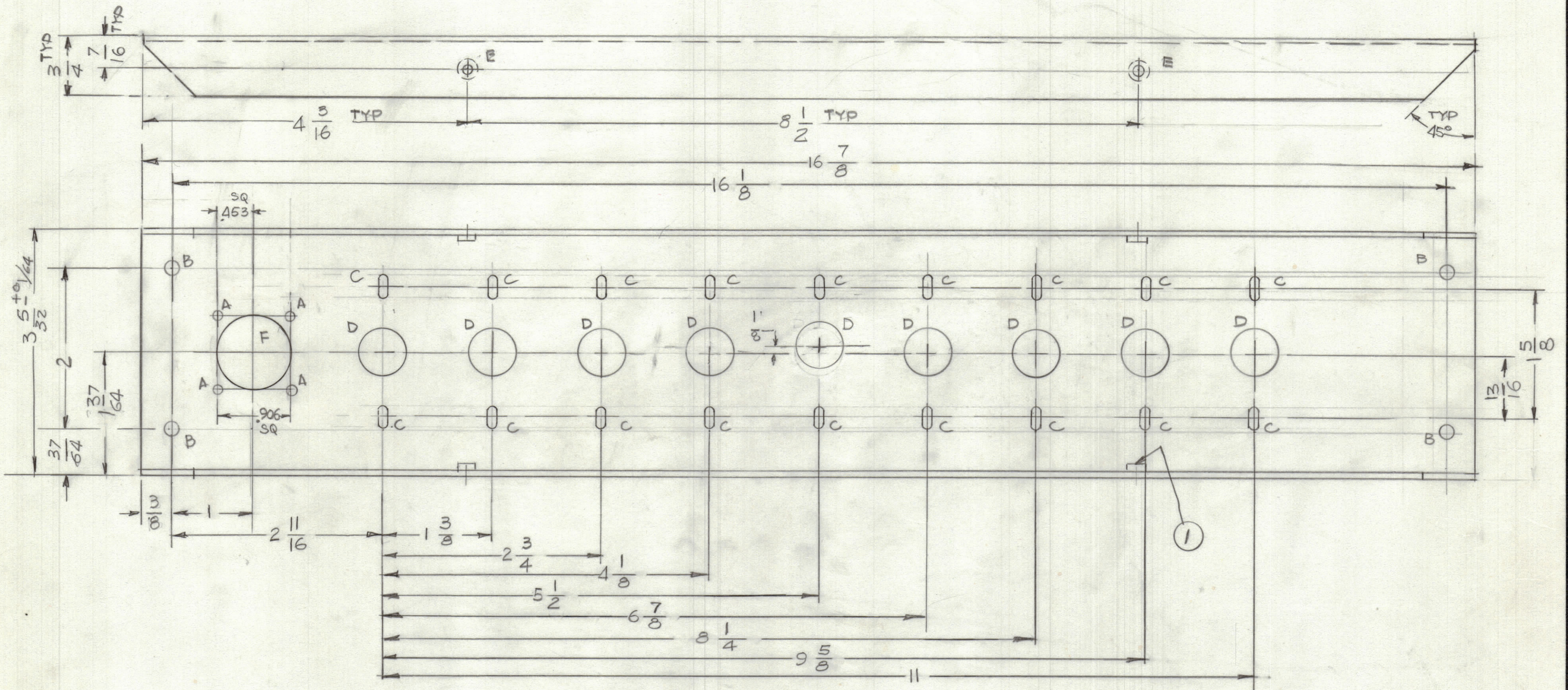


REVISIONS						
ZONE	LTR	DESCRIPTION	DATE	E.M.N.NO	DRAFT	APPD
	Ø	ORIGINAL RELEASE FOR PRODUCTION	7/24/83			



UNLESS OTHERWISE SPECIFIED:

1. USE MATERIAL THICKNESS FOR MAXIMUM RADIUS ON ALL BENDS.
2. ALL ANGULAR BENDS 90 DEGREES.
3. REMOVE ALL BURRS AND SHARP EDGES.
4. MOUNT INSERTS AFTER FINISHING.

- HOLES**
- A - 9/64 DIA 4 REQ'D
 - B - 11/64 DIA 4 REQ'D
 - C - 9/64 X 9/32 SLOT 18 REQ'D
 - D - 5/8 DIA 9 REQ'D
 - E - .191 - .194 DIA 4 REQ'D
 - F - 15/16 DIA

QTY. REQ.	ITEM	PART NO.	DESCRIPTION	SYMBOL
4	1	NT 129-0632-4	NUT, ROUND	

LIST OF MATERIAL

FINAL APPROVAL	DATE
MECH. DES.	DATE
ELECT. DES.	DATE
CHECKED	DATE
DRAWN	DATE
G.D.L.	6-22-83

THE TECHNICAL MATERIEL CORP.
MAMARONECK, NEW YORK

PANEL, REAR

1	MAC-2	
QTY / UNIT	MODEL USED ON	ASS'Y NO.
APPLICATION		
CODE		

TOLERANCES ON
 DECIMALS .X ± .05
 .XX ± .01
 .XXX ± .005
 FRACTIONS ± 1/64
 ANGLES ± 0° -30'

MATERIAL .063 THK
ALUM 5052-H32
FINISH S404
VEL-IRIDITE

SIZE	CODE IDENT. NO.	DWG NO.	ISSUE
C	82679	MS7115	Ø
SCALE	1:1	SHEET	OF

NOTICE TO PERSONS RECEIVING THIS DRAWING
 THE TECHNICAL MATERIEL CORPORATION claims proprietary right in the material disclosed hereon. This drawing is issued in confidence for engineering information only and may not be reproduced or used to manufacture anything shown hereon without permission from THE TECHNICAL MATERIEL CORPORATION to the user. This drawing is loaned for mutual assistance and is subject to recall at any time.