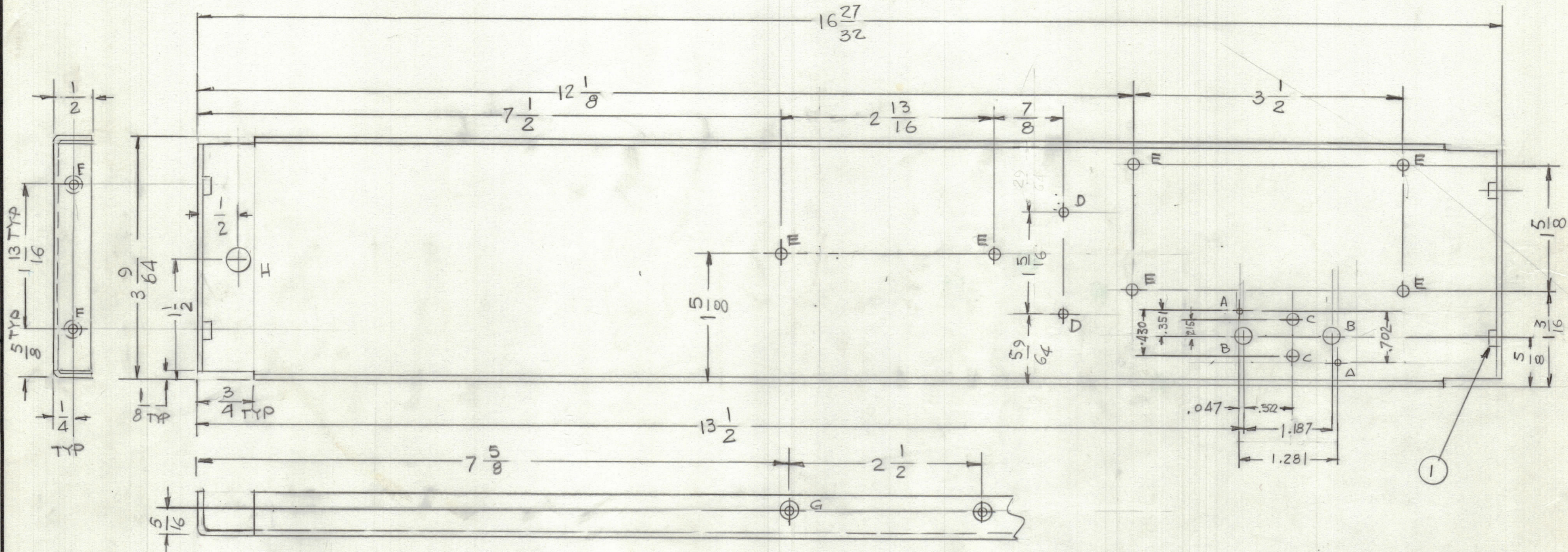


REVISIONS						
ZONE	LTR	DESCRIPTION	DATE	E.M.N.NO	DRAFT	CHKD APPD
	Ø	ORIGINAL RELEASE FOR PRODUCTION	7/20/83			



- HOLES -
- A - 7/64 DIA 2 REQ'D
  - B - 7/32 DIA 2 REQ'D
  - C - 11/64 DIA 2 REQ'D
  - D - 9/64 DIA 2 REQ'D
  - E - 3/16 DIA 6 REQ'D
  - F - .191-.194 DIA 4 REQ'D
  - G - .144 C'SHK 82°.284 DIA 2 REQ'D
  - H - 5/16 DIA

UNLESS OTHERWISE SPECIFIED:

- USE MATERIAL THICKNESS FOR MAXIMUM RADIUS ON ALL BENDS.
- ALL ANGULAR BENDS 90 DEGREES.
- REMOVE ALL BURRS AND SHARP EDGES.
- MOUNT INSERTS AFTER FINISHING.

QTY. REQ.	ITEM	PART NO.	DESCRIPTION	SYMBOL
4	1	NT 129-0632-4	NUT, ROUND	

LIST OF MATERIAL

THE TECHNICAL MATERIEL CORP.  
MAMARONECK, NEW YORK

CENTER PLATE

FINAL APPROVAL	DATE
MECH. DES.	DATE
ELECT. DES.	DATE
CHECKED	DATE
DRAWN	DATE

G.D.L. 6-22-83

SIZE	CODE IDENT.NO	DWG NO.	ISSUE
C	82679	MS 7117	Ø

SCALE SHEET OF

1	MAC - 2	
QTY / UNIT	MODEL USED ON	ASS'Y NO.
APPLICATION		
CODE		
NOTICE TO PERSONS RECEIVING THIS DRAWING		
THE TECHNICAL MATERIEL CORPORATION claims proprietary right in the material disclosed hereon. This drawing is issued in confidence for engineering information only and may not be reproduced or used to manufacture anything shown hereon without permission from THE TECHNICAL MATERIEL CORPORATION to the user. This drawing is loaned for mutual assistance and is subject to recall at any time.		

UNLESS OTHERWISE SPECIFIED DIMENSIONS ARE IN INCHES AND INCLUDE CHEMICALLY APPLIED OR PLATED FINISHES

TOLERANCES ON

DECIMALS	FRACTIONS
.X ± .05	± 1/64
.XX ± .01	ANGLES
.XXX ± .005	± 0° -30'

MATERIAL .063 THK  
S052-H32

FINISH YEL IRIDITE  
3404

REF: LD