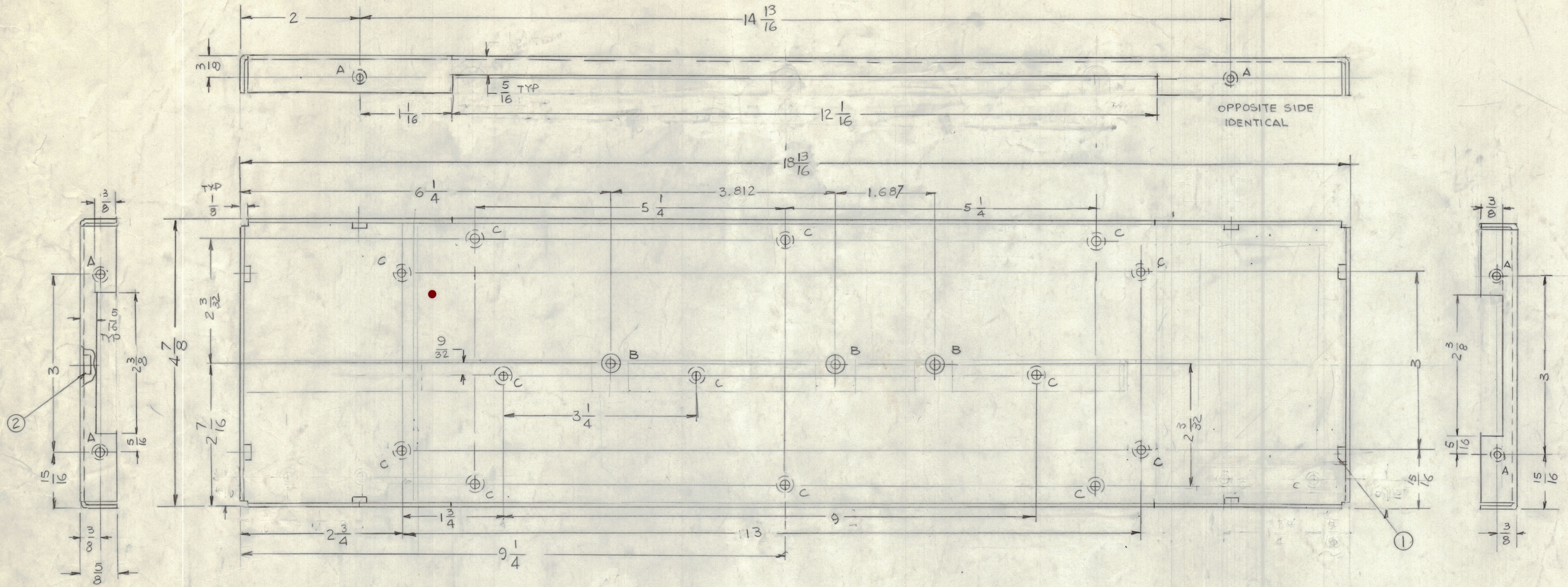


REVISIONS							
E.M.N.O	DRAFT	CHKD	ZONE	LTR	DESCRIPTION	DATE	APPROVED
	GDL			X1	UPDATED	2-26-86	
	GDL			X2	CUTS OUT ON TOP & BOTTOM ADD.	6-2-88	



HOLES
 A - .191 - .194 DIA 8 REQ'D
 B - .270 - .274 3 REQ'D
 C - .144 DIA. C'SHK 82° TO .284 DIA 13 REQ'D

QTY. REQ.	ITEM	PART NO.	DESCRIPTION	SYMBOL
3	2	NT129-1224-4	NUT, ROUND	B
8	1	NT129-632-4	NUT, ROUND	A

LIST OF MATERIAL	
FINAL APPROVAL	DATE
MECH. DES.	DATE
ELECT. DES.	DATE
CHECKED	DATE
DRAWN	DATE

THE TECHNICAL MATERIEL CORP.
 MAMARONECK, NEW YORK

PLATE LEFT SIDE

QTY / UNIT	MODEL USED ON	ASS'Y NO.
	mmx-4	
APPLICATION		
	CODE	

MATERIAL .063 THK
 ALUM. 5052-H32
 FINISH S404
 YEL IRIDE

SIZE	CODE	IDENT NO.	DWG NO.	ISSUE
D	82679		MS 7124	X2

NOTICE TO PERSONS RECEIVING THIS DRAWING
 THE TECHNICAL MATERIEL CORPORATION claims proprietary right in the material disclosed hereon. This drawing is issued in confidence for engineering information only and may not be reproduced or used to manufacture anything shown hereon without permission from THE TECHNICAL MATERIEL CORPORATION to the user. This drawing is loaned for mutual assistance and is subject to recall at any time.