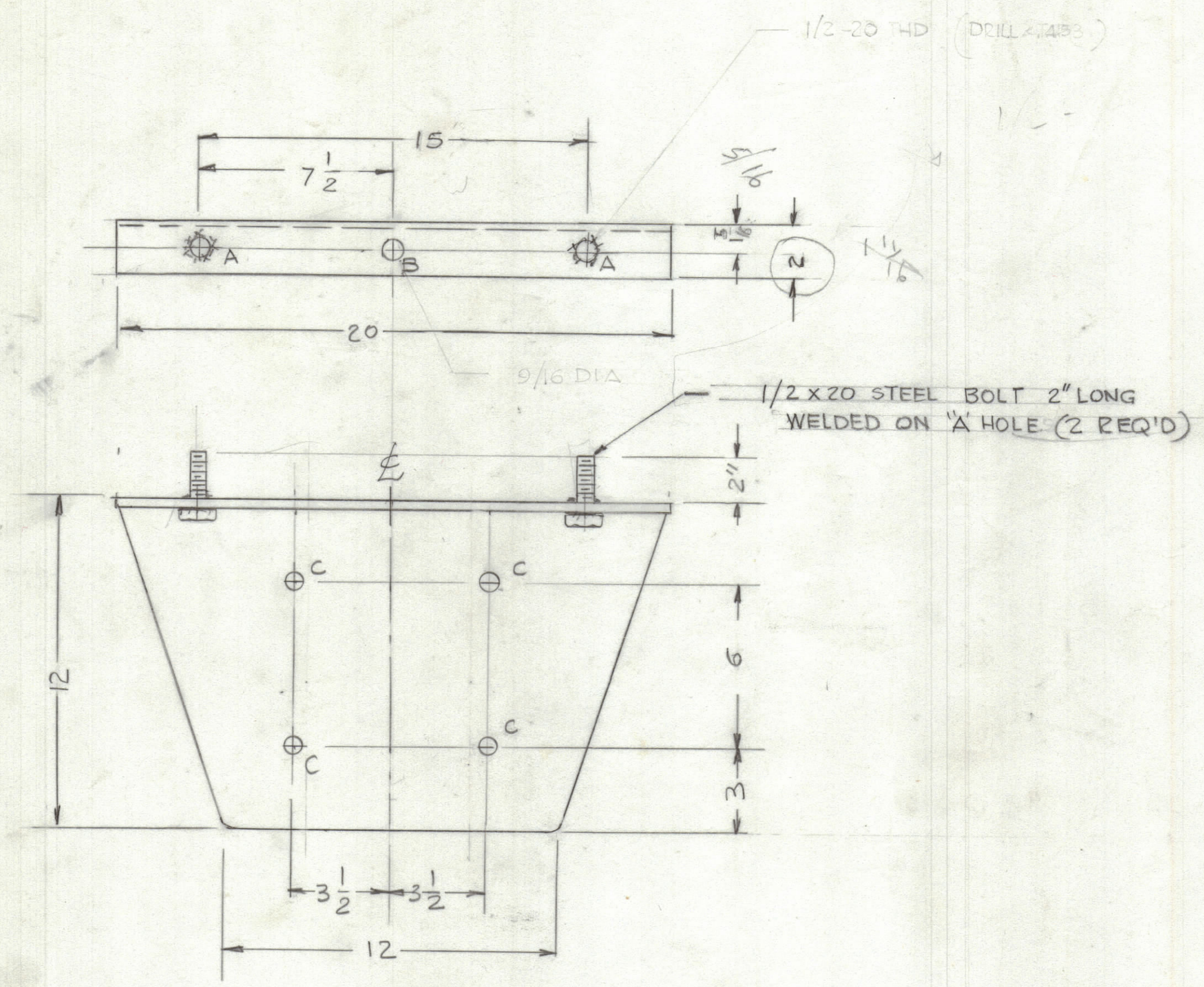


REVISIONS						
ZONE	LTR	DESCRIPTION	DATE	E.M.N.NO	DRAFT	CHKD APPD



HOLES:
 A - 17/32 DIA FOR 12 REQ'D (453 DRILL) 2 REQ'D
 B - 9/16 DIA
 C - 5/8 DIA 4 REQ'D

2		
QTY / UNIT	MODEL USED ON	ASS'Y NO.
APPLICATION		
	CODE	
<small>NOTICE TO PERSONS RECEIVING THIS DRAWING</small> <small>THE TECHNICAL MATERIEL CORPORATION claims proprietary right in the material disclosed hereon. This drawing is issued in confidence for engineering information only and may not be reproduced or used to manufacture anything shown hereon without permission from THE TECHNICAL MATERIEL CORPORATION to the user. This drawing is loaned for mutual assistance and is subject to recall at any time.</small>		

UNLESS OTHERWISE SPECIFIED DIMENSIONS ARE IN INCHES AND INCLUDE CHEMICALLY APPLIED OR PLATED FINISHES

TOLERANCES ON
 DECIMALS .X ± .05
 .XX ± .01
 .XXX ± .005
 FRACTIONS ± 1/64
 ANGLES ± 0°-30'

MATERIAL 1/8 THK STEEL COLD ROLLED
 FINISH PRIMER PAINT LIGHT GREY TEXTURED

QTY. REQ.	ITEM	PART NO.	DESCRIPTION	SYMBOL
LIST OF MATERIAL				
FINAL APPROVAL		DATE		
MECH. DES.		DATE		
ELECT. DES.		DATE		
CHECKED		DATE		
DRAWN		DATE		
G.D.L.		5-10-89		
THE TECHNICAL MATERIEL CORP. MAMARONECK, NEW YORK BRACKET, POLE MTG TER 4K-600				
SIZE	CODE	IDENT.NO	DWG NO.	ISSUE
C	82679	MS 7209		6
SCALE	1/4		SHEET	OF