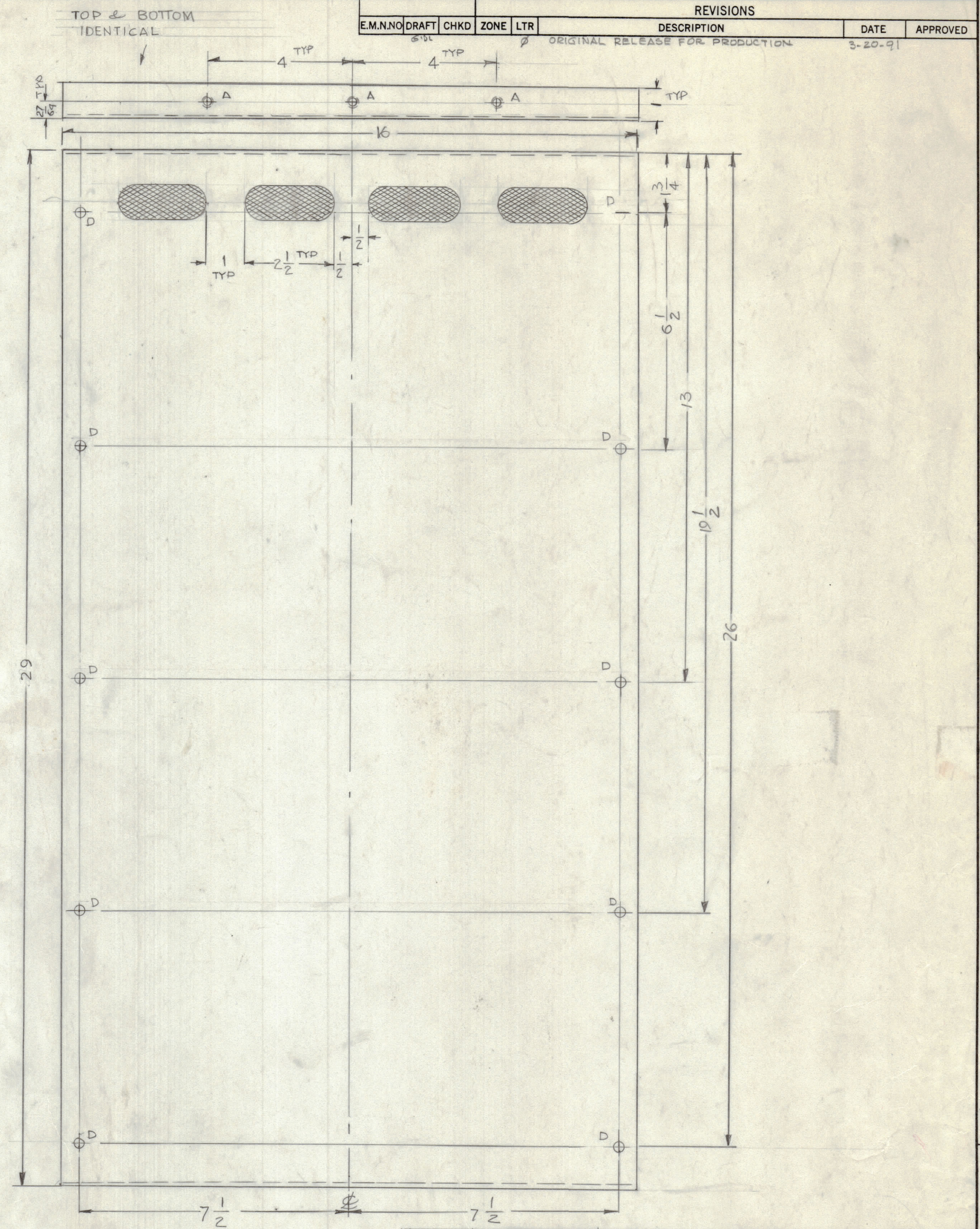
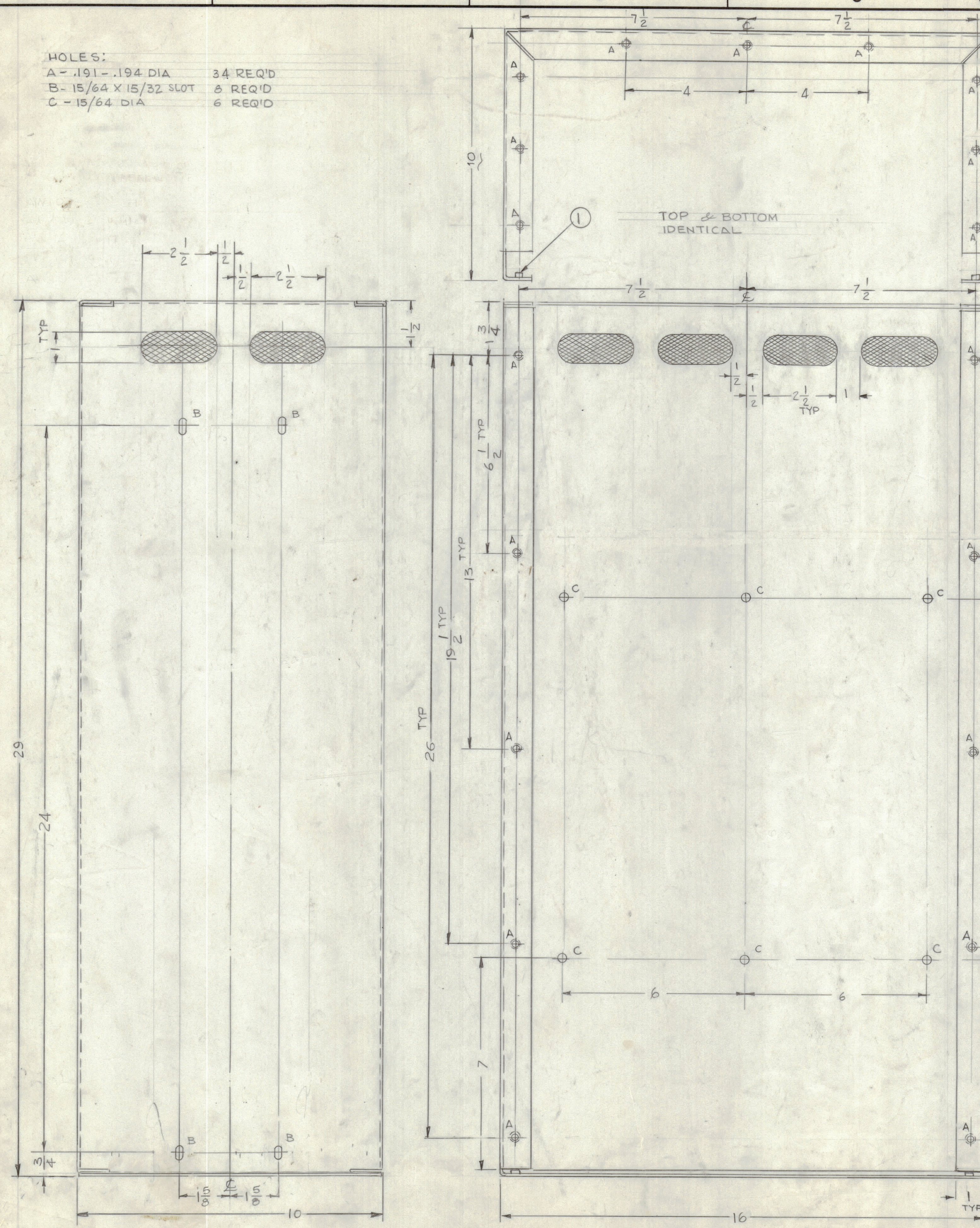


HOLES:
 A - .191 - .194 DIA 34 REQ'D
 B - 15/64 X 15/32 SLOT 8 REQ'D
 C - 15/64 DIA 6 REQ'D



REVISIONS				DATE	APPROVED
E.M.N.	DRAFT	CHKD	ZONE	LTR	DESCRIPTION
ORIGINAL RELEASE FOR PRODUCTION				3-20-91	

QTY. REQ.	ITEM	PART NO.	DESCRIPTION	SYMBOL
34	1	NT129-4-0832	NUT, ROUND	A

LIST OF MATERIAL			
FINAL APPROVAL	DATE	THE TECHNICAL MATERIEL CORP.	
MECH. DES.	DATE	MAMARONECK, NEW YORK	
ELECT. DES.	DATE	CASE TER - 1K	
CHECKED	DATE		
DRAWN	DATE		

QTY / UNIT	MODEL USED ON	ASSY NO.
	APPLICATION	
	CODE	

NOTICE TO PERSONS RECEIVING THIS DRAWING
 THE TECHNICAL MATERIEL CORPORATION claims proprietary right in the material disclosed hereon.
 This drawing is issued in confidence for engineering information only and may not be reproduced or used
 to manufacture anything shown hereon without permission from THE TECHNICAL MATERIEL CORPORATION
 to the user. This drawing is loaned for mutual assistance and is subject to recall at any time.

TOLERANCES ON	
DECIMALS	FRACTIONS
X ± .05	= 1/64
XX ± .01	ANGLES
XXX ± .005	= 0° - 30°

MATERIAL .081 THK
 ALY 5052-H32
 FINISH S404 YEL IRIDITE
 LIGHT GREY TEXTURED

SIZE	CODE	IDENT NO.	DWG NO.	ISSUE
D	82679		MS 7235	