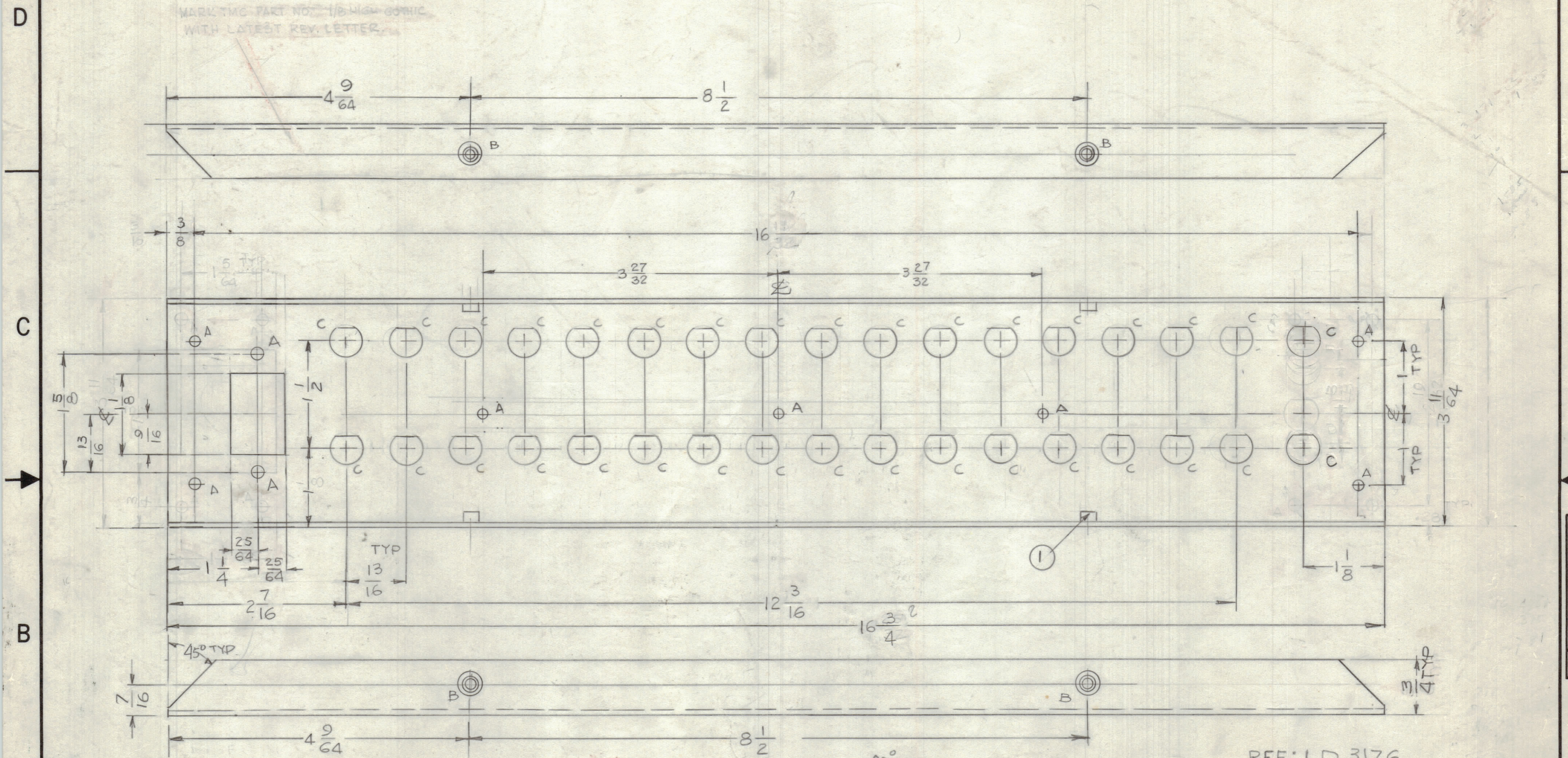


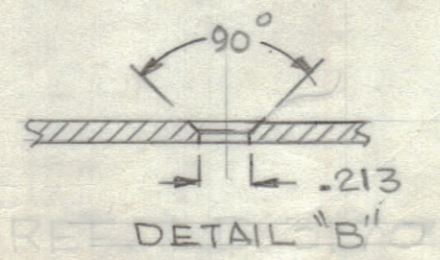
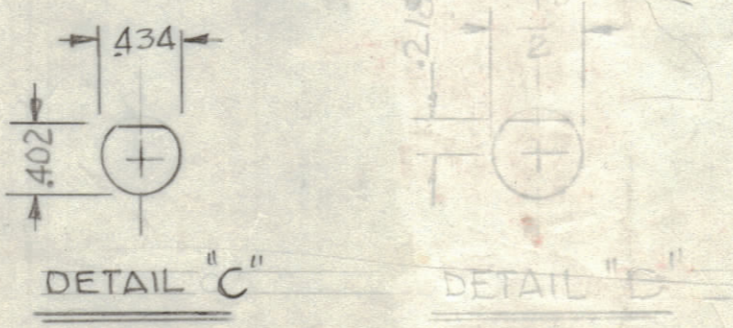
REVISIONS						
ZONE	LTR	DESCRIPTION	DATE	E.M.N.NO	DRAFT	CHKD APPD
		ORIGINAL RELEASE FOR PROD	9-25-91		GDL	
A		CHANGE TWO "D" HOLE TO "C" HOLE	1-14-93		GDL	
B		ON HOLES LEGEND ADD. ONE "A" HOLE	2-15-93		GDL	

MARK TMC PART NO. 1/8 HIGH GORNIC WITH LATEST REV. LETTER.



REF: LD 3176

HOLES:
 A - 3/16 DIA 9 REQ'D
 B - SEE DETAIL "B" 4 REQ'D
 C - SEE DETAIL "C" 34 REQ'D
 D - SEE DETAIL "D" 21 REQ'D



1	AMC-325	
QTY / UNIT	MODEL USED ON	ASS'Y NO.
APPLICATION		
CODE		

NOTICE TO PERSONS RECEIVING THIS DRAWING
 THE TECHNICAL MATERIEL CORPORATION claims proprietary right in the material disclosed hereon. This drawing is issued in confidence for engineering information only and may not be reproduced or used to manufacture anything shown hereon without permission from THE TECHNICAL MATERIEL CORPORATION to the user. This drawing is loaned for mutual assistance and is subject to recall at any time.

UNLESS OTHERWISE SPECIFIED DIMENSIONS ARE IN INCHES AND INCLUDE CHEMICALLY APPLIED OR PLATED FINISHES

TOLERANCES ON
 DECIMALS .X ± .05
 .XX ± .01
 .XXX ± .005
 FRACTIONS ± 1/64
 ANGLES ± 0° 30'

MATERIAL .081 THK ALUM. 5052-H32
 FINISH S404 VEL IRIDITE

4	1	6M107-24	INSERT HEX	
QTY. REQ.	ITEM	PART NO.	DESCRIPTION	SYMBOL
LIST OF MATERIAL				
FINAL APPROVAL		DATE		THE TECHNICAL MATERIEL CORP. MAMARONECK, NEW YORK PANEL JACK
MECH. DES.		DATE		
ELECT. DES.		DATE		
CHECKED		DATE		
DRAWN		DATE		
G.D.L.		6-12-90		
SIZE	CODE IDENT. NO.	DWG. NO.	ISSUE	
C	82679	MS 7236	B	
SCALE	1:1	SHEET	OF	