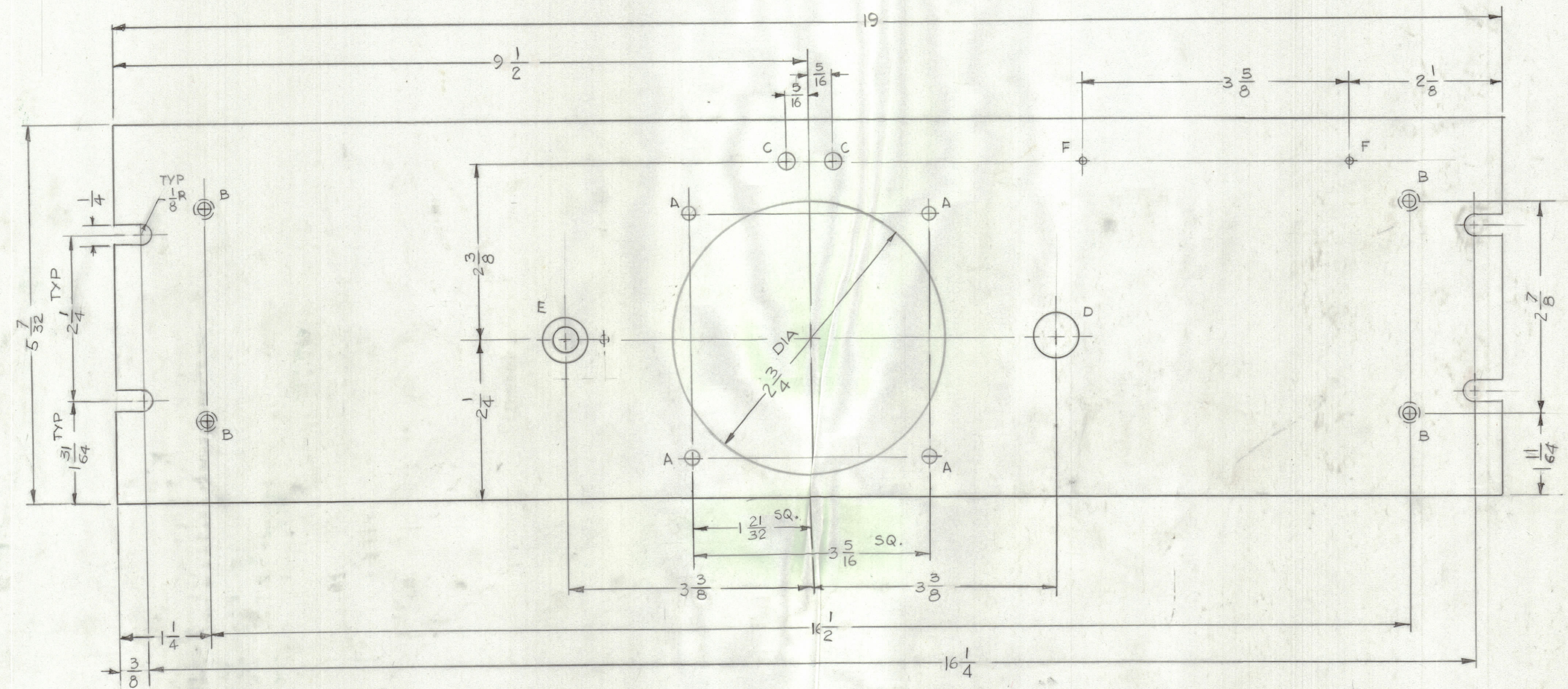


REVISIONS				DATE	APPROVED
E.M.N.	DRAFT	CHKD	ZONE	LTR	DESCRIPTION



- HOLES —
- A - 13/64 DIA — 4 REQ'D
  - B - .169 DIA CSK 82° TO 337 DIA 14 REQ'D
  - C - 1/4 DIA — 2 REQ'D
  - D - 5/8 DIA — 1 "
  - E - SEE DETAIL — 1 "
  - F - #47 DRILL — 2 REQ'D

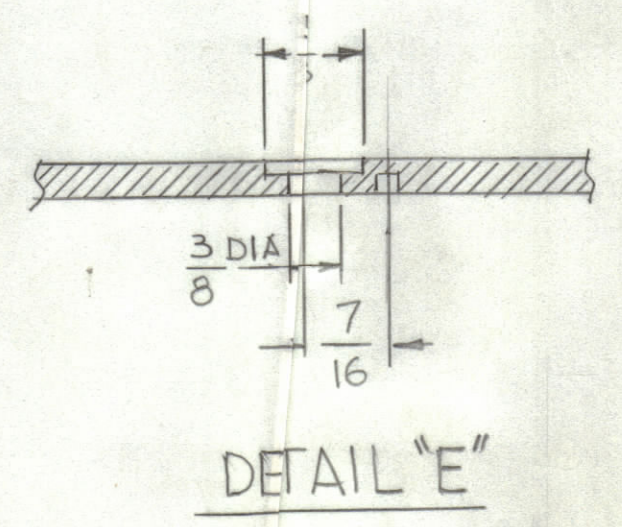
**MACHINING:**

- MILL ALL EDGES.
- HOLES MUST BE DRILLED, UNLESS OTHERWISE SPECIFIED.
- LATERAL BOW OF PANEL MUST BE KEPT TO .031 TOLERANCE.
- PANEL MUST BE FREE OF ALL MACHINING MARKS, GOUGES AND SCRATCHES. IF NECESSARY, SAND FRONT OF PANEL WITH NO. 120 GRIT SANDPAPER.

**FINISH NOTES:**

- S404 - IRIDITE 14-2 AL-COAT.
- S114 - ZINC CHROMATE PRIMER
- S115 - SMOOTH GRAY ENAMEL

FRONT AND EDGES ONLY  
PRIME AND PAINT PER CUSTOMER'S SPECIFICATIONS



QTY. REQ.	ITEM	PART NO.	DESCRIPTION	SYMBOL
REF.LD				
LIST OF MATERIAL				
UNLESS OTHERWISE SPECIFIED DIMENSIONS ARE IN INCHES AND INCLUDE CHEMICALLY APPLIED OR PLATED FINISHES		FINAL APPROVAL	DATE	<b>THE TECHNICAL MATERIEL CORP.</b> MAMARONECK, NEW YORK  <b>FRONT, PANEL</b>
TOLERANCES ON		MECH. DES.	DATE	
DECIMALS		ELECT. DES.	DATE	
FRACTIONS		CHECKED	DATE	
.X ± .05 .XX ± .01 .XXX ± .005		DRAWN	DATE	
MATERIAL 3/16 THK ALUM 2024-H		G.D.L.	8.15.91	
FINISH SEE F		SIZE CODE IDENT NO DWG NO.		ISSUE
		D 82679 MS 7256		1
		SCALE 1:1		SHEET OF

1	BSP-ID	
QTY / UNIT	MODEL USED ON	ASSY NO.
APPLICATION		
CODE		
NOTICE TO PERSONS RECEIVING THIS DRAWING THE TECHNICAL MATERIEL CORPORATION claims proprietary right in the material disclosed hereon. This drawing is issued in confidence for engineering information only and may not be reproduced or used to manufacture anything shown hereon without permission from THE TECHNICAL MATERIEL CORPORATION to the user. This drawing is loaned for mutual assistance and is subject to recall at any time.		