

4

3

2

1

REVISIONS

ZONE	LTR	DESCRIPTION	DATE	E.M.N.NO	DRAFT	CHKD	APPD

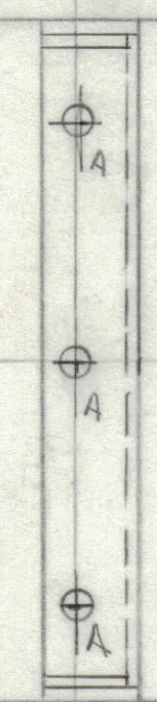
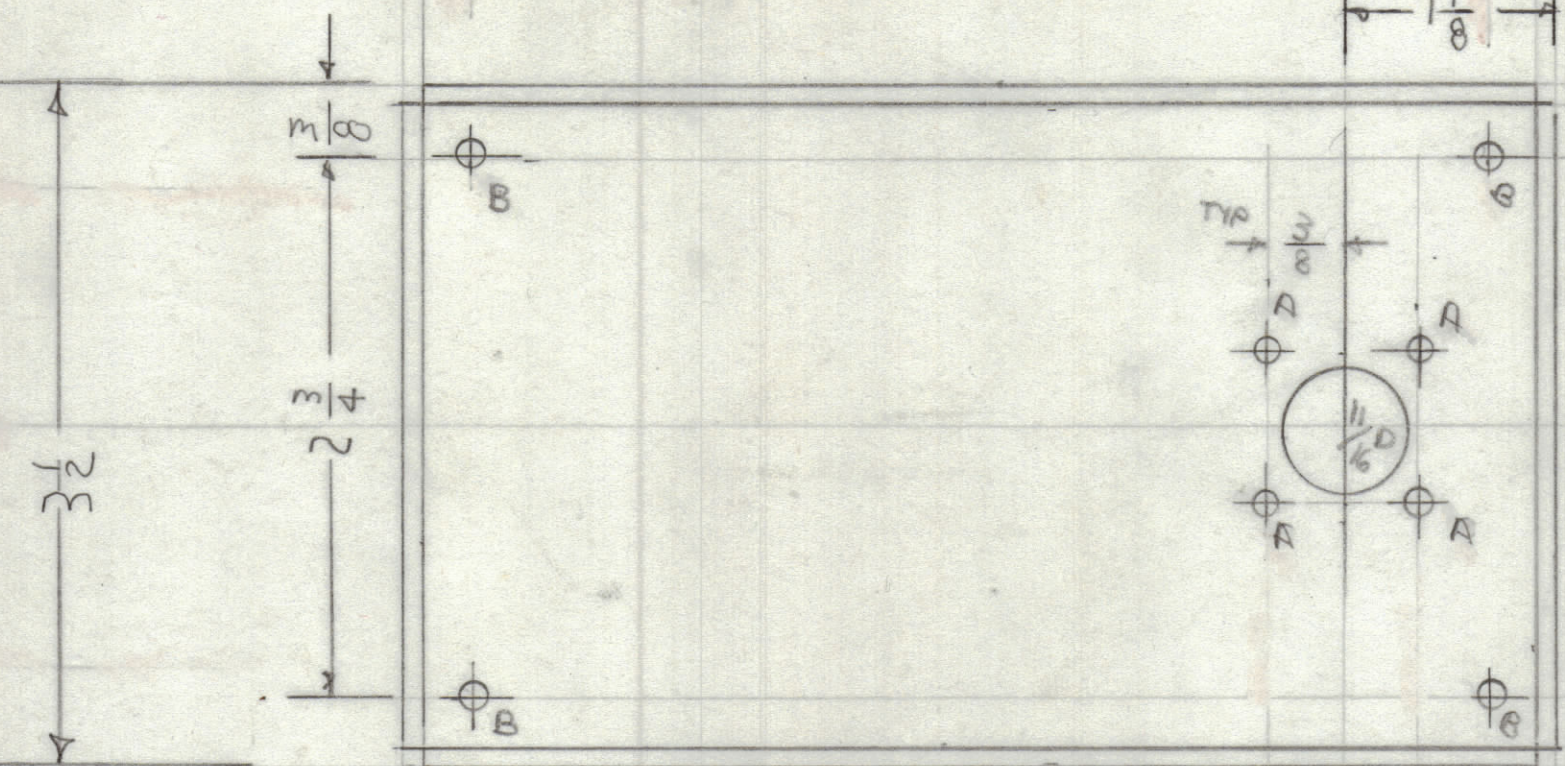
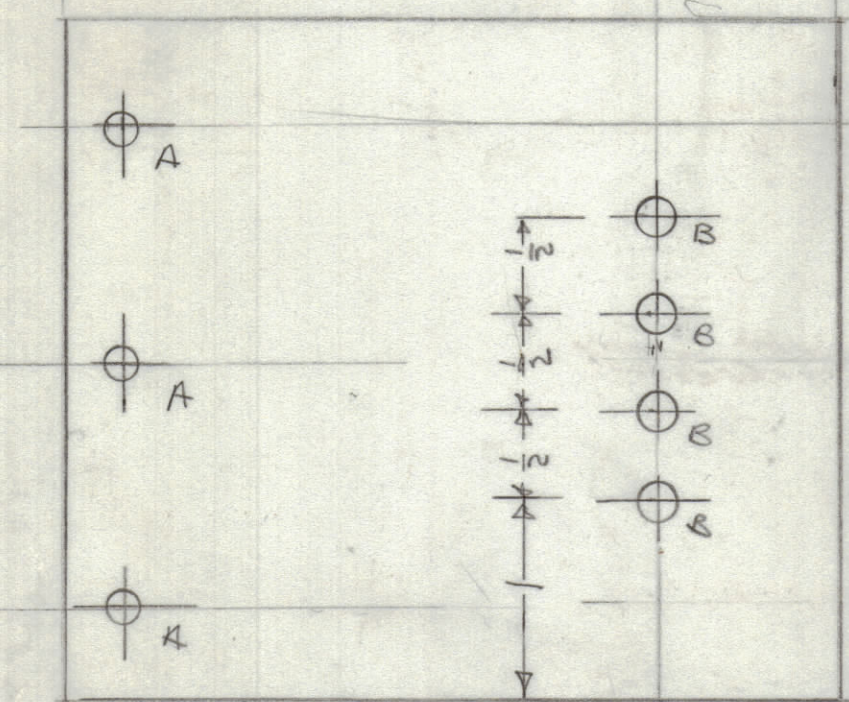
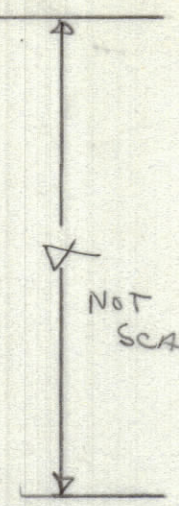
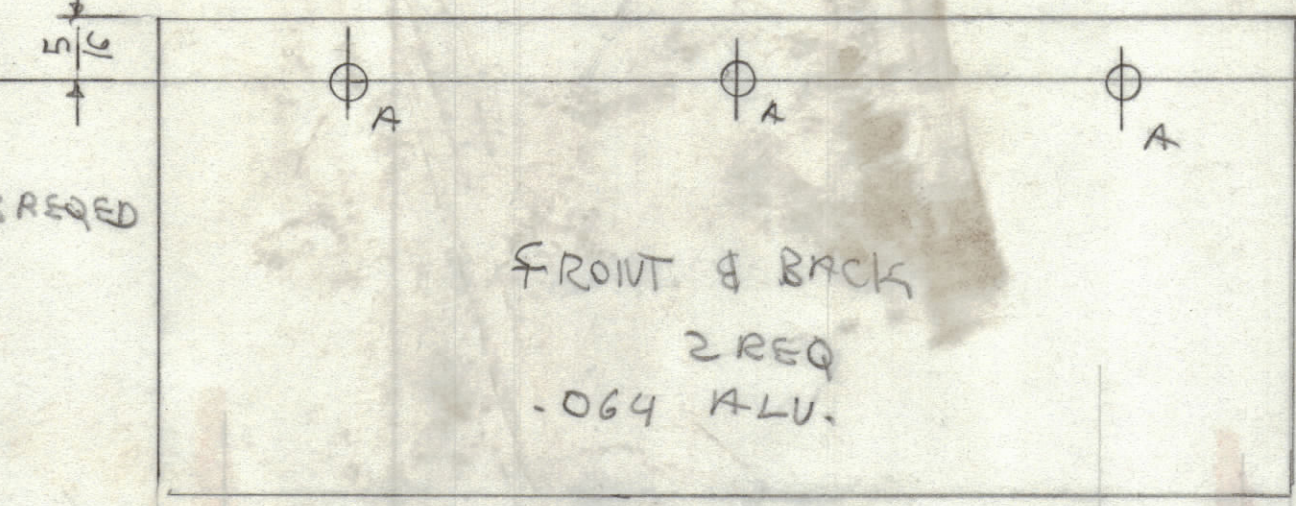
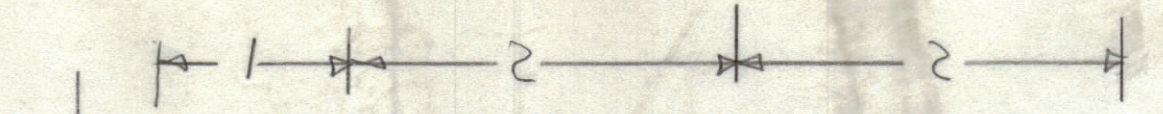
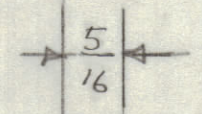
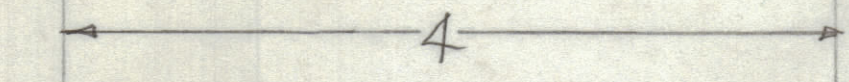
SIDE PHENOLIC

Make 1 out of 064 ALUM NO B HOLES

A = 9/64 3 REQ'D

FRONT & BACK 2 REQ .064 ALU.

NOT SCALE

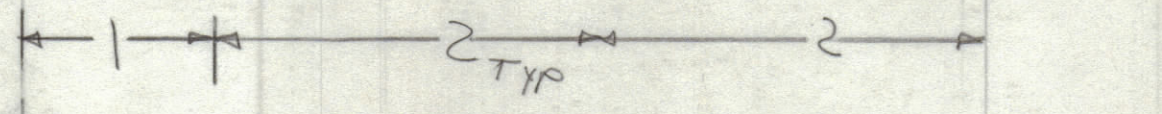
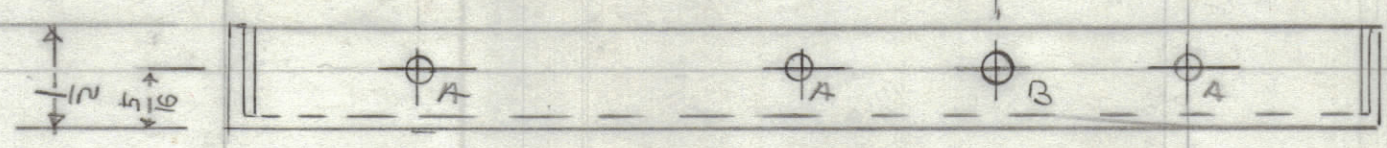
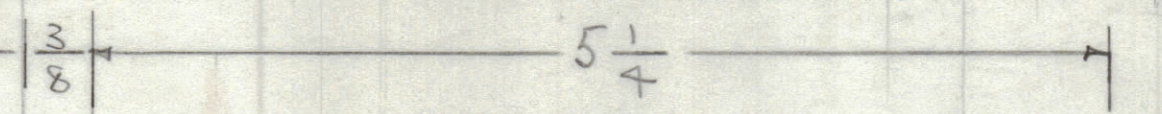


1/8 PHENOLIC

1 REQ'D

A = 9/64 3 REQ'D
B = 1/4 4 REQ'D

PX 1314



A = #36 DRILL 16 REQ'D
B = 13/64 DIA 5 REQ'D

QTY. REQ.	ITEM	PART NO.	DESCRIPTION	SYMBOL
-----------	------	----------	-------------	--------

LIST OF MATERIAL

UNLESS OTHERWISE SPECIFIED DIMENSIONS ARE IN INCHES AND INCLUDE CHEMICALLY APPLIED OR PLATED FINISHES

TOLERANCES ON	
DECIMALS	FRACTIONS
.X ± .05	± 1/64
.XX ± .01	ANGLES
.XXX ± .005	± 0° - 30'

FINAL APPROVAL	DATE
MECH. DES.	DATE
ELECT. DES.	DATE
CHECKED	DATE
DRAWN	DATE

THE TECHNICAL MATERIEL CORP.
MAMARONECK, NEW YORK

XFMR CASE (WHIP ANT)
(POURING JIG)

QTY / UNIT	MODEL USED ON	ASS'Y NO.

NOTICE TO PERSONS RECEIVING THIS DRAWING
 THE TECHNICAL MATERIEL CORPORATION claims proprietary right in the material disclosed hereon. This drawing is issued in confidence for engineering information only and may not be reproduced or used to manufacture anything shown hereon without permission from THE TECHNICAL MATERIEL CORPORATION to the user. This drawing is loaned for mutual assistance and is subject to recall at any time.

MATERIAL ALUM 064
FINISH

SIZE	CODE IDENT. NO.	DWG NO.	ISSUE
C	82679	MS 7272	

SCALE SHEET OF

4

3

2

1