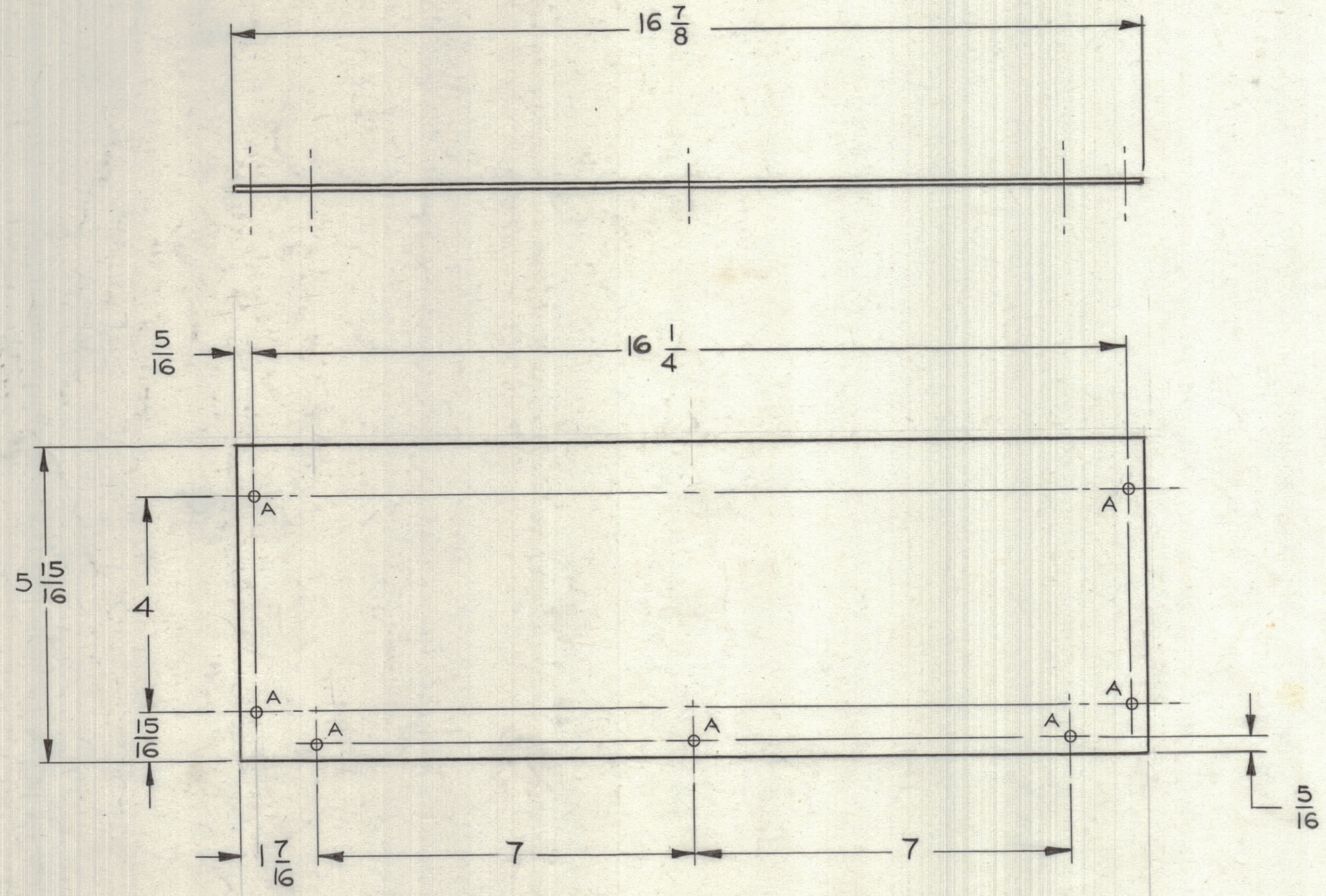


REVISIONS						
ZONE	LTR	DESCRIPTION	DATE	E.M.N.NO	DRAFT	CHKD APPD
A		MATL WAS .051 THK	1-17-68			



A - 1/16 - 7 REQ

**MACHINING:**  
 1. MILL ALL EDGES.  
 2. HOLES MUST BE DRILLED, UNLESS OTHERWISE SPECIFIED.  
 3. REMOVE ALL BURRS AND SHARP EDGES

QTY / UNIT	MODEL USED ON	ASS'Y NO.
APPLICATION		
CODE		

NOTICE TO PERSONS RECEIVING THIS DRAWING  
 THE TECHNICAL MATERIEL CORPORATION claims proprietary right in the material disclosed hereon. This drawing is issued in confidence for engineering information only and may not be reproduced or used to manufacture anything shown hereon without permission from THE TECHNICAL MATERIEL CORPORATION to the user. This drawing is loaned for mutual assistance and is subject to recall at any time.

UNLESS OTHERWISE SPECIFIED DIMENSIONS ARE IN INCHES AND INCLUDE CHEMICALLY APPLIED OR PLATED FINISHES

TOLERANCES ON  
 DECIMALS .X ± .05  
 .XX ± .01  
 .XXX ± .005  
 FRACTIONS ± 1/64  
 ANGLES ± 0° -30'

MATERIAL .041 THK ALUMINUM  
 FINISH S 404 YEL IRIDITE

QTY. REQ.	ITEM	PART NO.	DESCRIPTION	SYMBOL
LIST OF MATERIAL				
FINAL APPROVAL <i>ERM</i>		DATE 11/10/67	<b>THE TECHNICAL MATERIEL CORP.</b> MAMARONECK, NEW YORK  <b>COVER, TOP AND BOTTOM</b> <b>AUXILIARY POWER PANEL</b> <b>TMC MOD APP-16</b>	
MECH. DES. R D I FATE		DATE 9-19-67		
ELECT. DES. R D I FATE		DATE 9-19-67		
CHECKED <i>[Signature]</i>		DATE 10-5-67		
DRAWN <i>Amiska</i>		DATE 9-19-67	SIZE C	CODE IDENT. NO. 82679
			DWG NO. MS8002	ISSUE A
			SCALE 1/2	SHEET OF