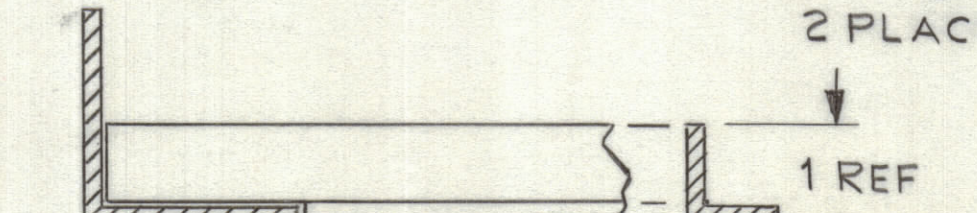
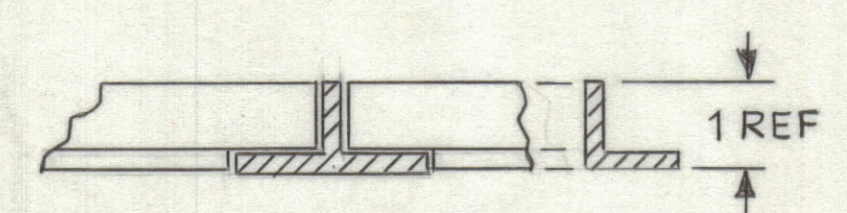
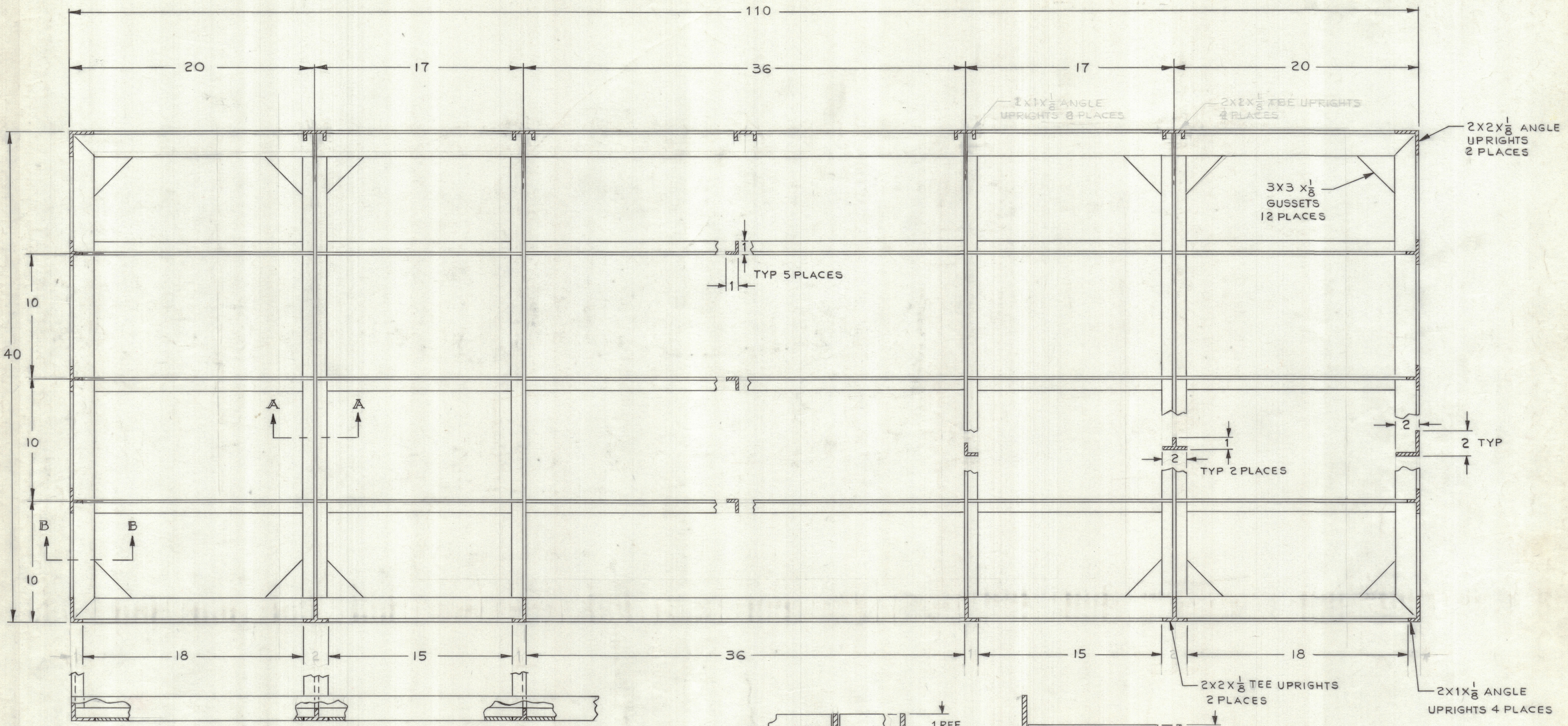


ZONE		LTR		DESCRIPTION		REVISIONS		DATE	E.M.N.	NO	DRAFT	CHKD	APPD



SEE MS 8044 FOR NOTES  
 HELIARC ALL JOINTS  
 GRIND FLUSH

REF: MS 8045, TOP & REAR  
 MS 8043, BASE

QTY / UNIT	MODEL USED ON	ASS'Y NO.
APPLICATION		
CODE		

NOTICE TO PERSONS RECEIVING THIS DRAWING  
 THE TECHNICAL MATERIEL CORPORATION claims proprietary right in the material disclosed hereon. This drawing is issued in confidence for engineering information only and may not be reproduced or used to manufacture anything shown hereon without permission from THE TECHNICAL MATERIEL CORPORATION to the user. This drawing is loaned for mutual assistance and is subject to recall at any time.

UNLESS OTHERWISE SPECIFIED DIMENSIONS ARE IN INCHES AND INCLUDE CHEMICALLY APPLIED OR PLATED FINISHES

TOLERANCES ON

DECIMALS	FRACTIONS
.X ± .05	± 1/64
.XX ± .01	ANGLES
.XXX ± .005	± 0° -30'

MATERIAL 6061-T6  
 ALUM - 1/25 THK  
 FINISH  
 SEE MS 8044

QTY. REQ.	ITEM	PART NO.	DESCRIPTION	SYMBOL
LIST OF MATERIAL				
FINAL APPROVAL <i>SJM</i> DATE 11-2-68				
MECH. DES. DATE 11-1-67				
ELECT. DES. DATE 11-7-67				
CHECKED <i>G. ORLANDI</i> DATE 11-2-67				
DRAWN <i>Amiska</i> DATE 11-2-67				
<b>THE TECHNICAL MATERIEL CORP.</b> MAMARONECK, NEW YORK				
<b>BASE</b> SPT 3KVHF				
SIZE	CODE	IDENT. NO.	DWG. NO.	ISSUE
D	82679	MS8043	15-3	φ
SCALE 1/4				SHEET 5 OF 3