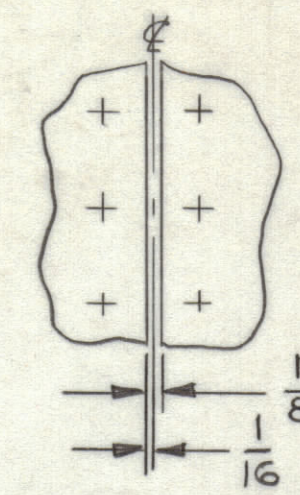
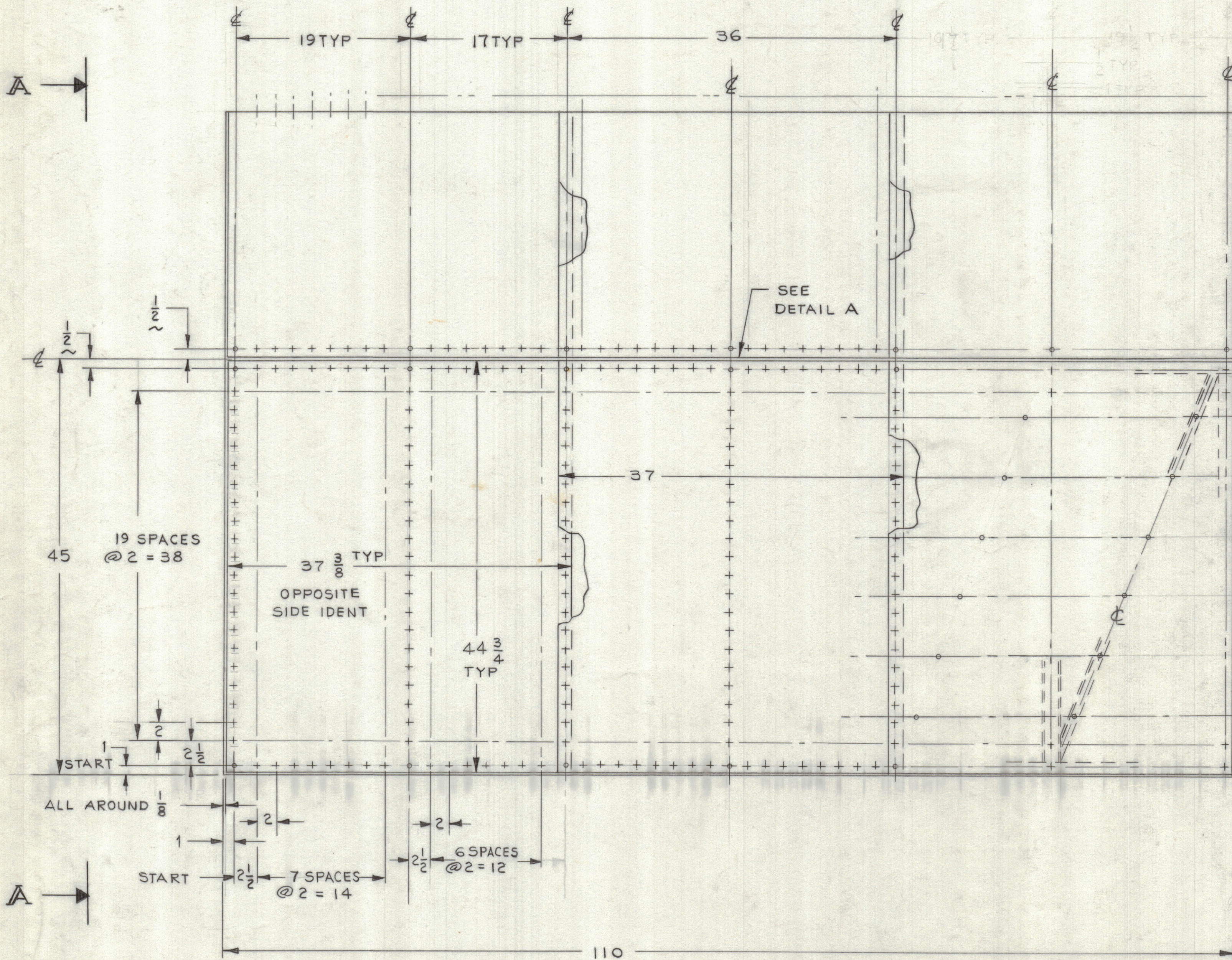


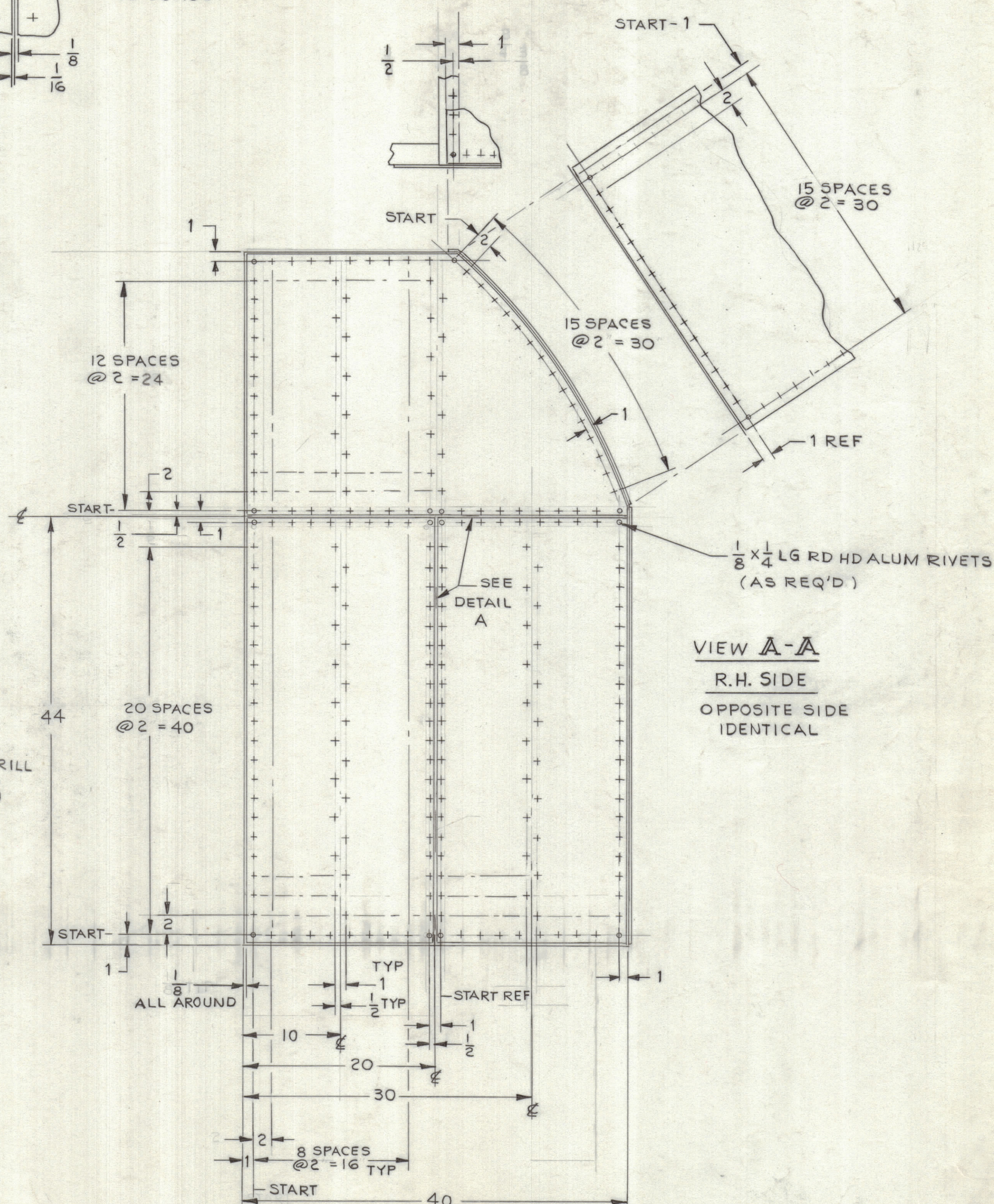
| ZONE |  | LTR |  | DESCRIPTION |  | REVISIONS |  | DATE | E.M.N.NO | DRAFT | CHKD | APPD |
|------|--|-----|--|-------------|--|-----------|--|------|----------|-------|------|------|
|      |  |     |  |             |  |           |  |      |          |       |      |      |



DETAIL A  
NO SCALE



REAR VIEW



VIEW A-A  
R.H. SIDE  
OPPOSITE SIDE IDENTICAL

| QTY. REQ. | ITEM | PART NO. | DESCRIPTION | SYMBOL |
|-----------|------|----------|-------------|--------|
|-----------|------|----------|-------------|--------|

LIST OF MATERIAL  
THE TECHNICAL MATERIEL CORP.  
MAMARONECK, NEW YORK

SIDE AND REAR PLATES  
SPT - 3KVHF

|   |  |
|---|--|
| UNLESS OTHERWISE SPECIFIED DIMENSIONS ARE IN INCHES AND INCLUDE CHEMICALLY APPLIED OR PLATED FINISHES | FINAL APPROVAL<br><i>Am</i><br>DATE 1-2-68 |
| TOLERANCES ON   | MECH. DES.<br>G. ORLANDI<br>DATE 11-9-67   |
| DECIMALS .X ± .05   | ELECT. DES.                                |
| FRACTIONS ± 1/64  | CHECKED<br>G. ORLANDI<br>DATE 11-9-67      |
| ANGLES ± 0° - 30'   | DRAWN<br><i>Amista</i><br>DATE 11-8-67     |

| QTY / UNIT | MODEL USED ON | ASS'Y NO. |
|------------|---------------|-----------|
|            | APPLICATION   |           |
|            | CODE          |           |

NOTICE TO PERSONS RECEIVING THIS DRAWING  
THE TECHNICAL MATERIEL CORPORATION claims proprietary right in the material disclosed hereon. This drawing is issued in confidence for engineering information only and may not be reproduced or used to manufacture anything shown hereon without permission from THE TECHNICAL MATERIEL CORPORATION to the user. This drawing is loaned for mutual assistance and is subject to recall at any time.

MATERIAL 2024-T3A  
ALUM .040 THK  
FINISH

SIZE CODE IDENT. NO. DWG NO. ISSUE  
D 82679 MS 8046

SCALE 1/8 SHEET OF