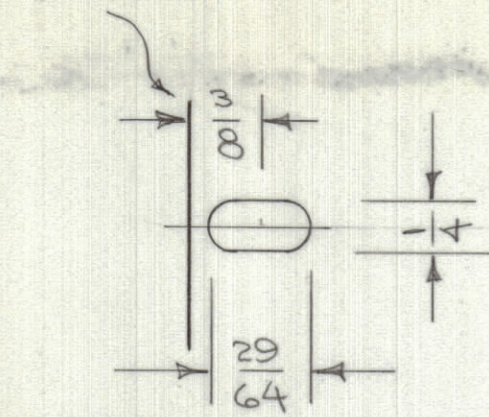
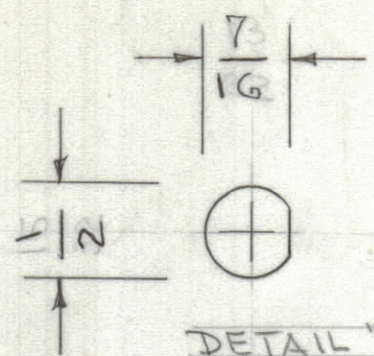


EDGE OF PANEL

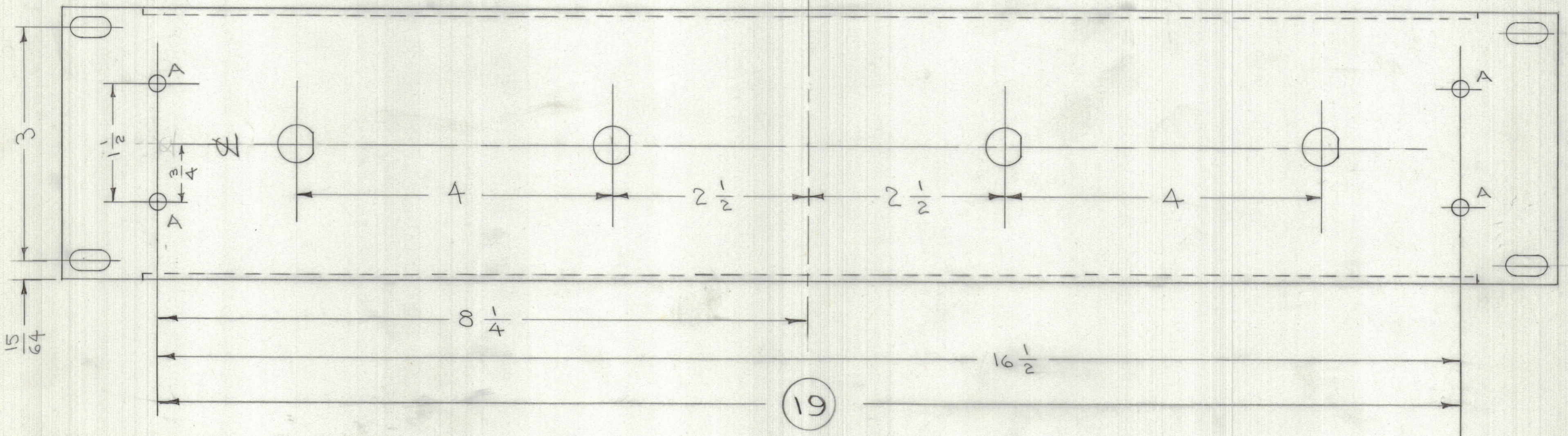
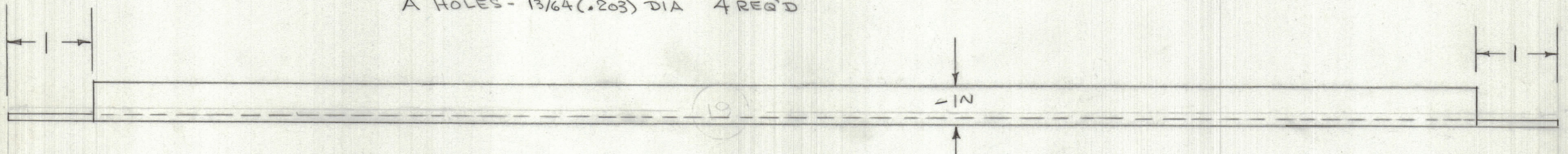


SLOT DETAIL



DETAIL "D" HOLES
4 REQ'D.

"A" HOLES - 13/64 (.203) DIA 4 REQ'D



REF: LD8015

REVISIONS							
ZONE	LTR	DESCRIPTION	DATE	E.M.N.NO	DRAFT	CHKD	APPD
X	XI	MATL WAS 3/16 THK	1-18-68				
ORIGINAL RELEASE FOR PRODUCTION							

QTY. REQ.	ITEM	PART NO.	DESCRIPTION	SYMBOL
LIST OF MATERIAL				

UNLESS OTHERWISE SPECIFIED DIMENSIONS ARE IN INCHES AND INCLUDE CHEMICALLY APPLIED OR PLATED FINISHES		FINAL APPROVAL <i>SM</i>	DATE 4/22/69
MECH. DES.		<i>RD</i>	DATE
ELECT. DES.			DATE
CHECKED C.D. DEAN			DATE 11-7-67
DRAWN			DATE

THE TECHNICAL MATERIEL CORP.
MAMARONECK, NEW YORK

FRONT PANEL
ASCU-1

1	ASCU-1	
QTY / UNIT	MODEL USED ON	ASS'Y NO.
APPLICATION		
	CODE	

NOTICE TO PERSONS RECEIVING THIS DRAWING
THE TECHNICAL MATERIEL CORPORATION claims proprietary right in the material disclosed herein. This drawing is issued in confidence for engineering information only and may not be reproduced or used to manufacture anything shown hereon without permission from THE TECHNICAL MATERIEL CORPORATION to the user. This drawing is loaned for mutual assistance and is subject to recall at any time.

MATERIAL .064 THK 5052 H32 ALUMINUM	FINISH S404 IRIDITE S114 PRIMER S115 ENAMEL
--	--

SIZE C	CODE IDENT.NO. 82679	DWG NO. MS8047	ISSUE <i>Ø</i>
SCALE		SHEET	OF