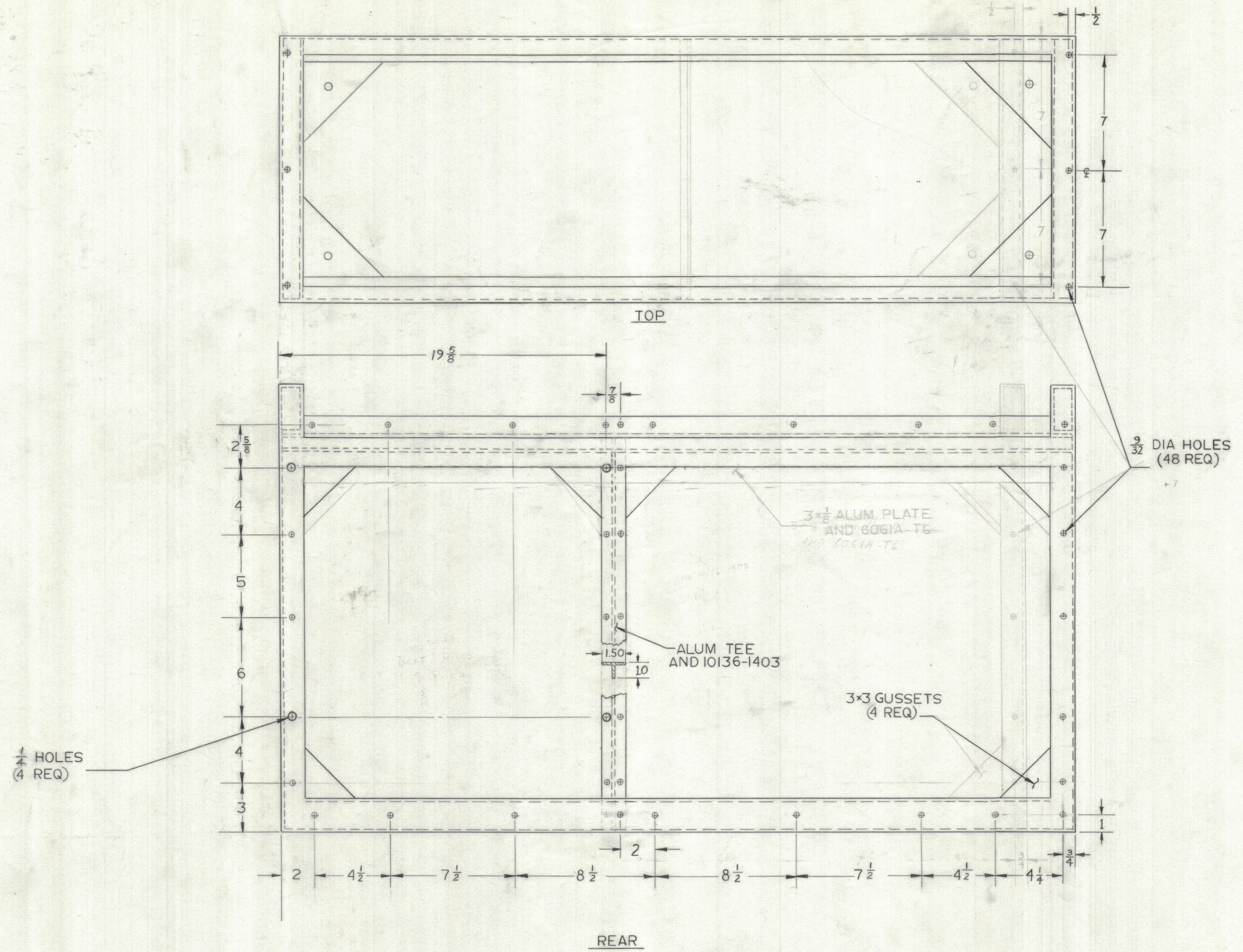


ZONE		LTR		DESCRIPTION		REVISIONS		DATE	E.M.N.NO	DRAFT	CHKD	APPD



1/4 HOLES  
(4 REQ)

3/32 DIA HOLES  
(48 REQ)

QTY / UNIT	MODEL USED ON	ASS'Y NO.
APPLICATION		
CODE		
<small>NOTICE TO PERSONS RECEIVING THIS DRAWING</small> <small>THE TECHNICAL MATERIEL CORPORATION claims proprietary right in the material disclosed hereon. This drawing is issued in confidence for engineering information only and may not be reproduced or used to manufacture anything shown hereon without permission from THE TECHNICAL MATERIEL CORPORATION to the user. This drawing is loaned for mutual assistance and is subject to recall at any time.</small>		

UNLESS OTHERWISE SPECIFIED DIMENSIONS ARE IN INCHES AND INCLUDE CHEMICALLY APPLIED OR PLATED FINISHES	
TOLERANCES ON	
DECIMALS	FRACTIONS
.X ± .05	± 1/64
.XX ± .01	ANGLES
.XXX ± .005	± 0° -30'
MATERIAL	SEE MS 8066
FINISH	SEE MS 8064

QTY. REQ.	ITEM	PART NO.	DESCRIPTION	SYMBOL
LIST OF MATERIAL				
FINAL APPROVAL	<i>G.M.</i>	DATE	5-23-68	
MECH. DES.	<i>G. ORLANDI</i>	DATE	11-6-67	
ELECT. DES.		DATE		
CHECKED	<i>G. ORLANDI</i>	DATE	11-16-67	
DRAWN	<i>C. Grob</i>	DATE	11/6/67	
MATERIAL			SEE MS 8066	
FINISH			SEE MS 8064	
SIZE	CODE	IDENT. NO.	DWG NO.	ISSUE
D	82679	MS 8065		∅
SCALE 1/2" = 1"				SHEET 2 OF 2

THE TECHNICAL MATERIEL CORP.  
MAMARONECK, NEW YORK

TMC1 TBRM AND BSP2  
35 PROJECTOR BASE  
BASE SLIDING DRAWER  
TYPE

MS 8065