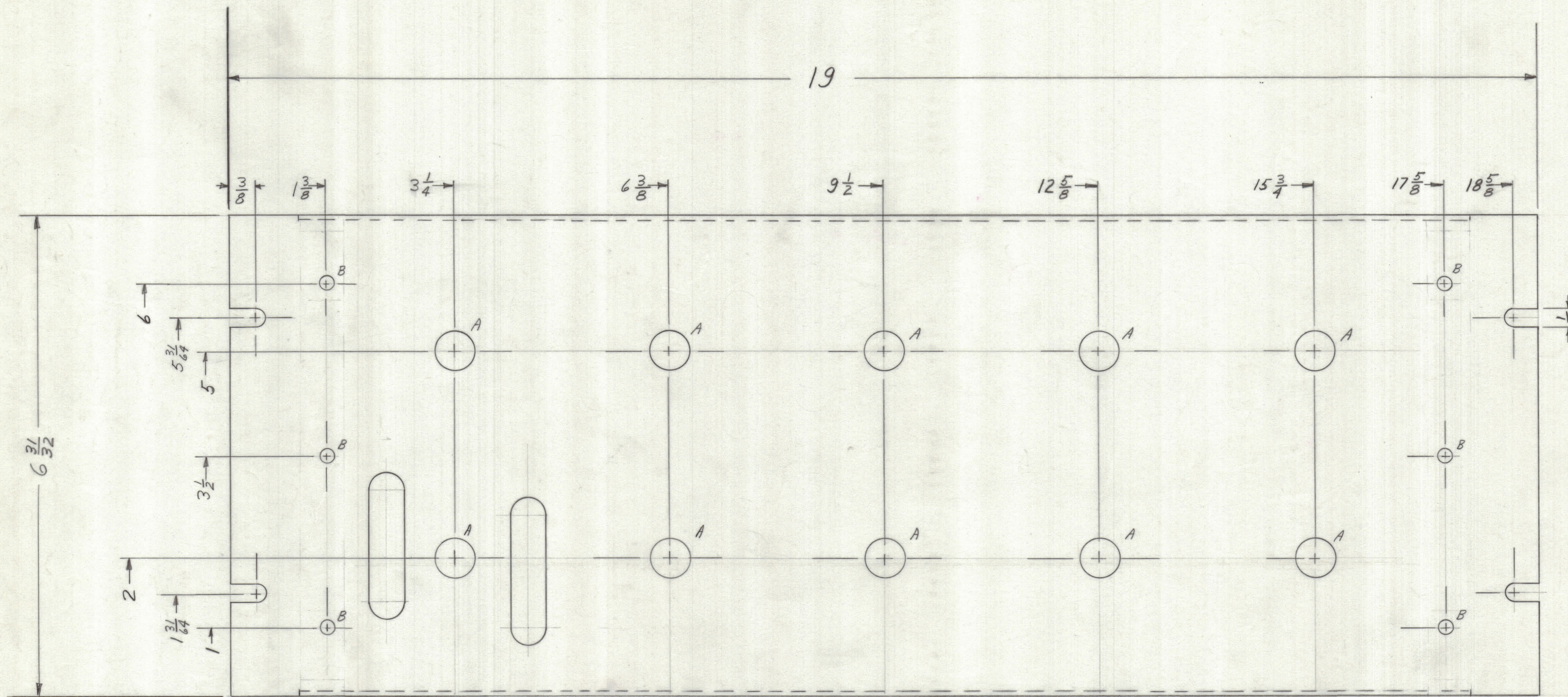
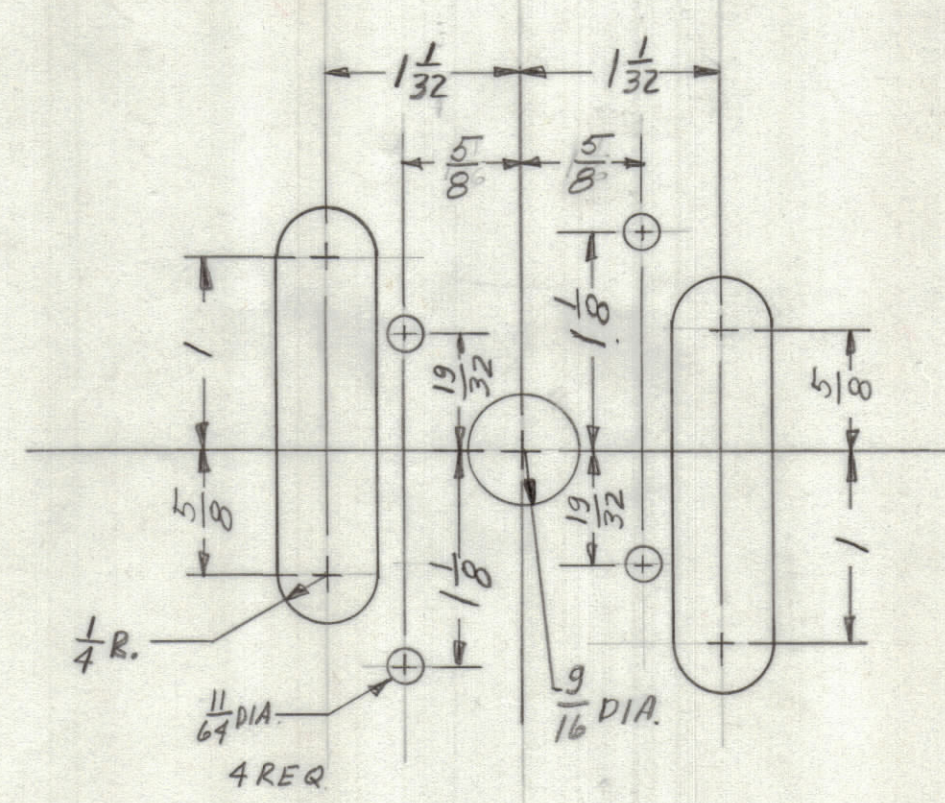
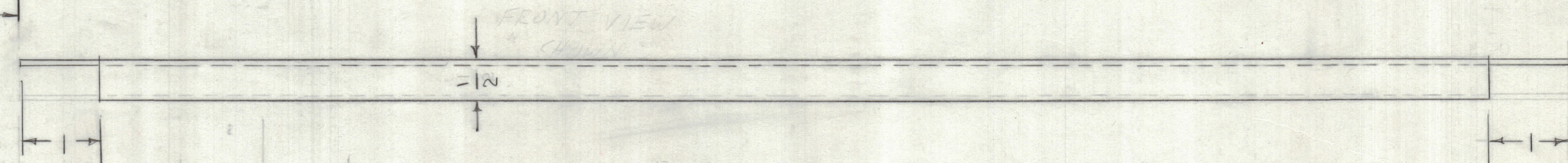


REVISIONS						
ZONE	LTR	DESCRIPTION	DATE	E.M.N.NO	DRAFT	CHKD APPD
7	A	MATL WAS 1/8 THK	1-17-68	7	CDD	



FRONT VIEW

LOCATING BASELINES



"A" DETAIL 10 REQ.
"B" ~ 13/64 DIA 6 REQ

1	AX8008	
QTY / UNIT	MODEL USED ON	ASS'Y NO.
APPLICATION		
CODE		
<small>NOTICE TO PERSONS RECEIVING THIS DRAWING</small> <small>THE TECHNICAL MATERIEL CORPORATION claims proprietary right in the material disclosed hereon. This drawing is issued in confidence for engineering information only and may not be reproduced or used to manufacture anything shown hereon without permission from THE TECHNICAL MATERIEL CORPORATION to the user. This drawing is loaned for mutual assistance and is subject to recall at any time.</small>		

UNLESS OTHERWISE SPECIFIED DIMENSIONS ARE IN INCHES AND INCLUDE CHEMICALLY APPLIED OR PLATED FINISHES

TOLERANCES ON
 DECIMALS .X ± .05
 .XX ± .01
 .XXX ± .005
 FRACTIONS ± 1/64
 ANGLES ± 0°-30'

MATERIAL .064 THK
 5052 H32 ALUMINUM
 FINISH
 S404 YEL. IRID.

QTY. REQ.	ITEM	PART NO.	DESCRIPTION	SYMBOL
LIST OF MATERIAL				
FINAL APPROVAL		DATE	THE TECHNICAL MATERIEL CORP.	
MECH. DES.		DATE	MAMARONECK, NEW YORK	
ELECT. DES.		DATE	PANEL, FRONT - AX8008	
CHECKED		DATE	IF SWITCHING UNIT	
DRAWN		DATE		
SIZE	CODE IDENT. NO.	DWG NO.	ISSUE	
D	82679	MS8131	A	
SCALE	SHEET			OF

REF: LD8022