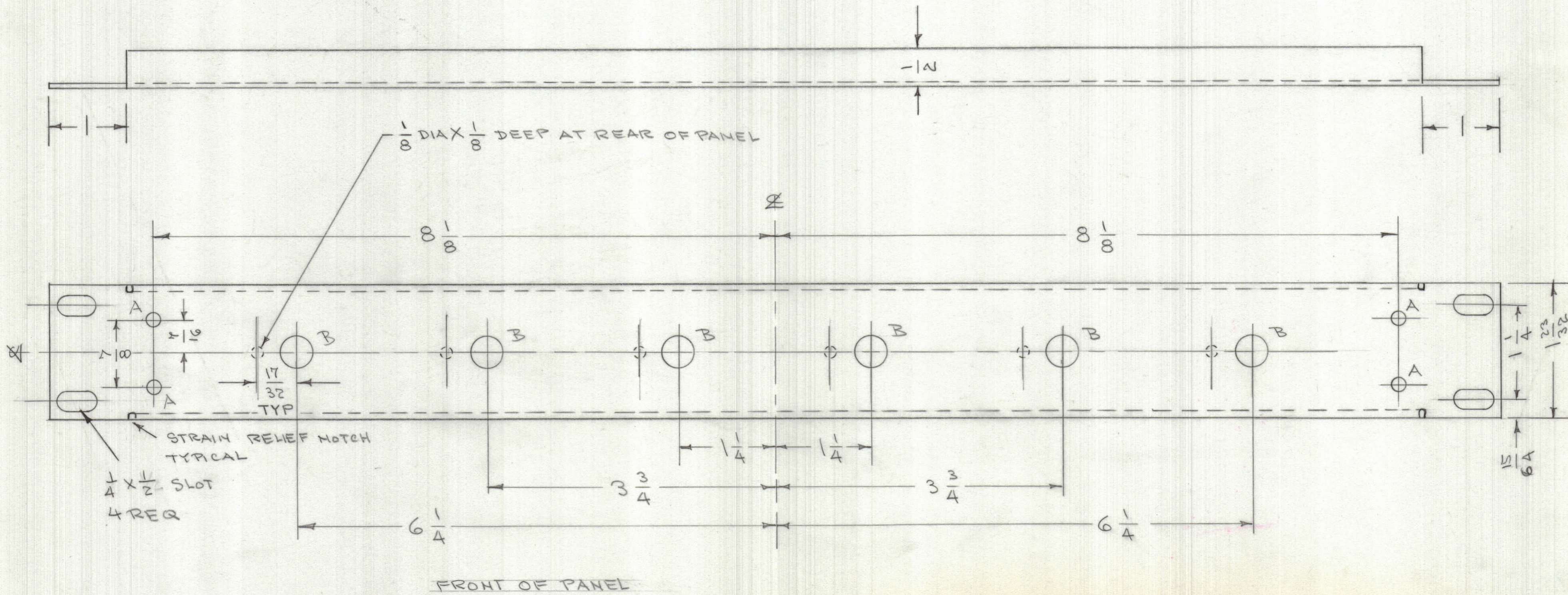


REVISIONS							
ZONE	LTR	DESCRIPTION	DATE	E.M.N.NO	DRAFT	CHKD	APPD
1	X1	MATL WAS 3/16 THK	1-18-68				

A HOLES 1/64 (.1562) DIA 4 REQ'D  
 B HOLES 13/32 (.4062) " 6 "



REF: MS1514 FOR MATERIAL, SIZE & FINISH  
 REF: LD 8027

QTY / UNIT	MODEL USED ON	ASS'Y NO.
1	AX8010 19	
APPLICATION		
	CODE	

NOTICE TO PERSONS RECEIVING THIS DRAWING  
 THE TECHNICAL MATERIEL CORPORATION claims proprietary right in the material disclosed hereon. This drawing is issued in confidence for engineering information only and may not be reproduced or used to manufacture anything shown hereon without permission from THE TECHNICAL MATERIEL CORPORATION to the user. This drawing is loaned for mutual assistance and is subject to recall at any time.

UNLESS OTHERWISE SPECIFIED DIMENSIONS ARE IN INCHES AND INCLUDE CHEMICALLY APPLIED OR PLATED FINISHES

TOLERANCES ON  
 DECIMALS .X ± .05  
 .XX ± .01  
 .XXX ± .005  
 FRACTIONS ± 1/64  
 ANGLES ± 0° -30'

MATERIAL .064 THK  
 5052 H32 ALUMINUM  
 FINISH SA04 IRIDITE  
 3114 PRIMER  
 3115 ENAMEL  
 FRONT & EDGES ONLY

QTY. REQ.	ITEM	PART NO.	DESCRIPTION	SYMBOL
LIST OF MATERIAL				
THE TECHNICAL MATERIEL CORP. MAMARONECK, NEW YORK				
FRONT PANEL				
TM19/TO4 SWITCHING PANEL				
FINAL APPROVAL <i>STM</i>		DATE 4-30-68		ISSUE Ø
MECH. DES.		DATE		
ELECT. DES.		DATE		
CHECKED <i>Smo</i>		DATE 4-29-68		SCALE
DRAWN C.D. DEAN		DATE 12-20-67		
SIZE			CODE IDENT. NO.	DWG NO.
C			82679	MS8141
SHEET				OF