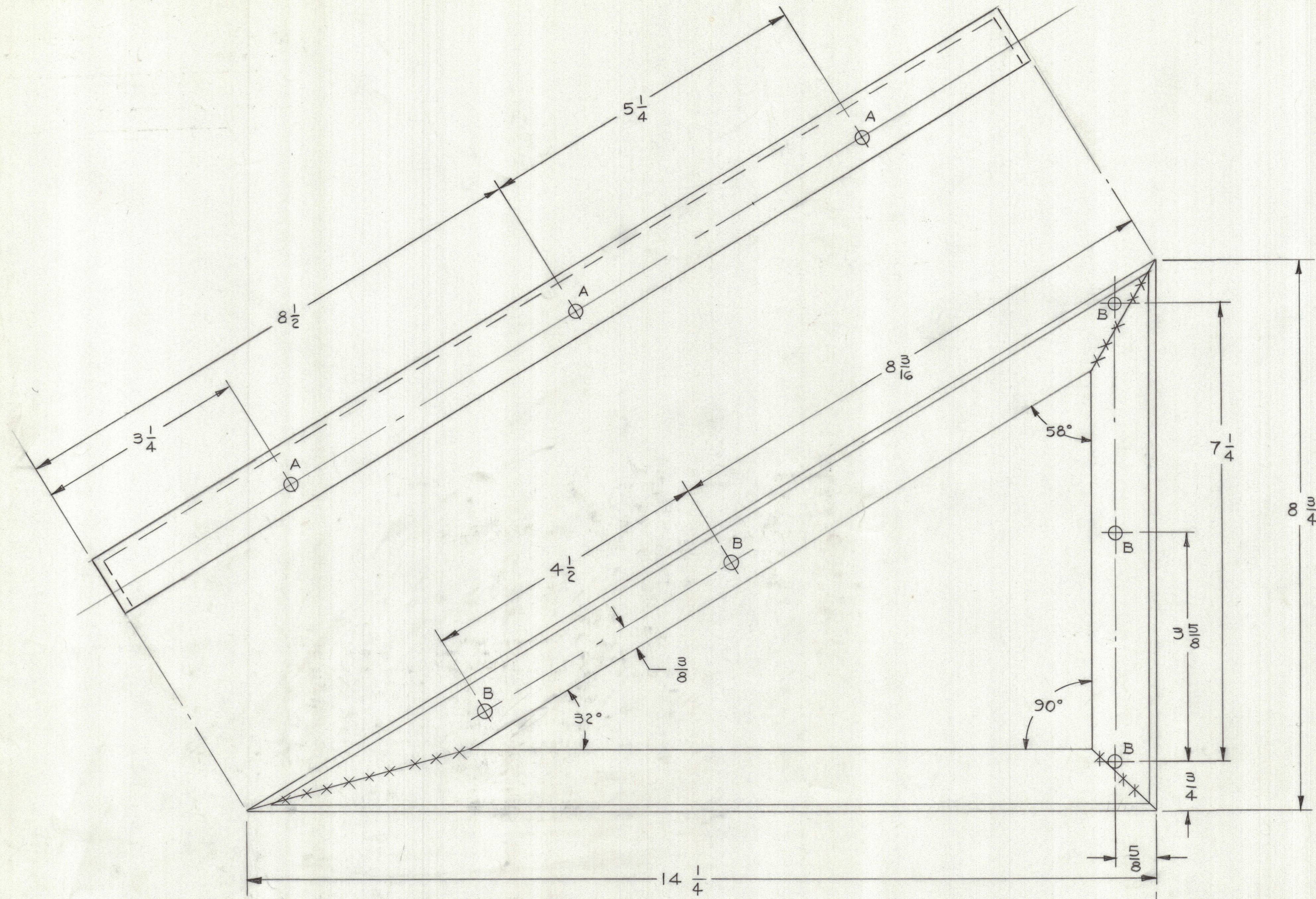
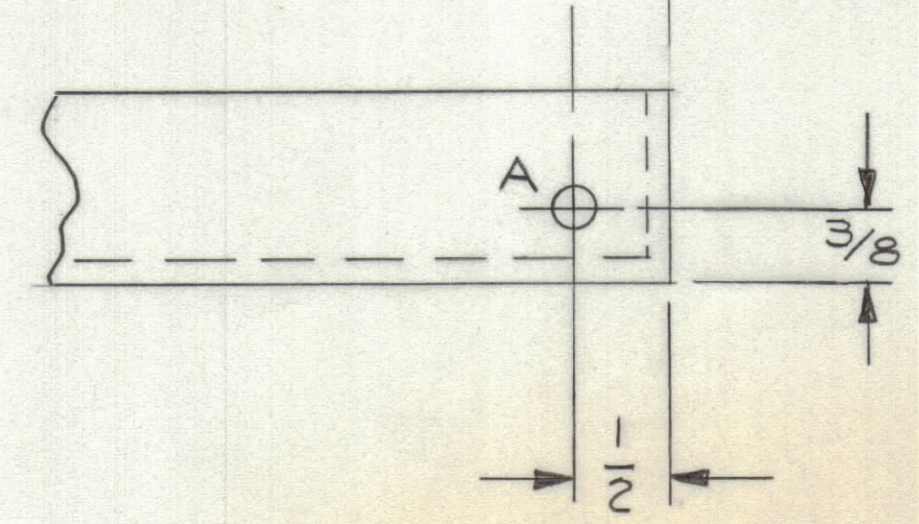


REVISIONS							
ZONE	LTR	DESCRIPTION	DATE	E.M.N.NO	DRAFT	CHKD	APPD



A -  $\frac{15}{64}$  DIA HOLES - 4 REQ'D  
 B -  $\frac{13}{64}$  DIA HOLES - 5 REQ'D

- NOTES:
1. MS 8151-1 LEFT SIDE, AS SHOWN.  
-2 OPPOSITE
  2. HELIARC ALL JOINTS,  
GRIND FLUSH ALL OUTSIDE EDGES.
  3. REMOVE ALL BURRS & SHARP EDGES.



2 EACH	UNITS 1GA & 1GC	
QTY / UNIT	MODEL USED ON	ASS'Y NO.
APPLICATION		
CODE		
<small>NOTICE TO PERSONS RECEIVING THIS DRAWING</small> <small>THE TECHNICAL MATERIEL CORPORATION claims proprietary right in the material disclosed hereon. This drawing is issued in confidence for engineering information only and may not be reproduced or used to manufacture anything shown hereon without permission from THE TECHNICAL MATERIEL CORPORATION to the user. This drawing is loaned for mutual assistance and is subject to recall at any time.</small>		

UNLESS OTHERWISE SPECIFIED DIMENSIONS ARE IN INCHES AND INCLUDE CHEMICALLY APPLIED OR PLATED FINISHES		FINAL APPROVAL <i>SPM</i> DATE 5-23-68
TOLERANCES ON		MECH. DES. <i>de Fato</i> DATE 7-3-68
DECIMALS	FRACTIONS	ELECT. DES. DATE
.X ± .05	± 1/64	CHECKED <i>BMD</i> DATE 7-3-68
.XX ± .01	ANGLES ± 0°-30'	DRAWN <i>Amiska/C.D.</i> DATE 7-3-68
.XXX ± .005		
MATERIAL 1X1X1/8 THK ALUM ANGLE		
FINISH S404 IRIDITE S114 PRIMER S115 ENAMEL		

QTY. REQ.	ITEM	PART NO.	DESCRIPTION	SYMBOL
LIST OF MATERIAL				
THE TECHNICAL MATERIEL CORP. MAMARONECK, NEW YORK				
P210 ANGLE MTG BRACKET				
			SIZE CODE IDENT. NO. DWG NO.	ISSUE
			D 82679 MS 8151	φ
			SCALE FULL	SHEET OF