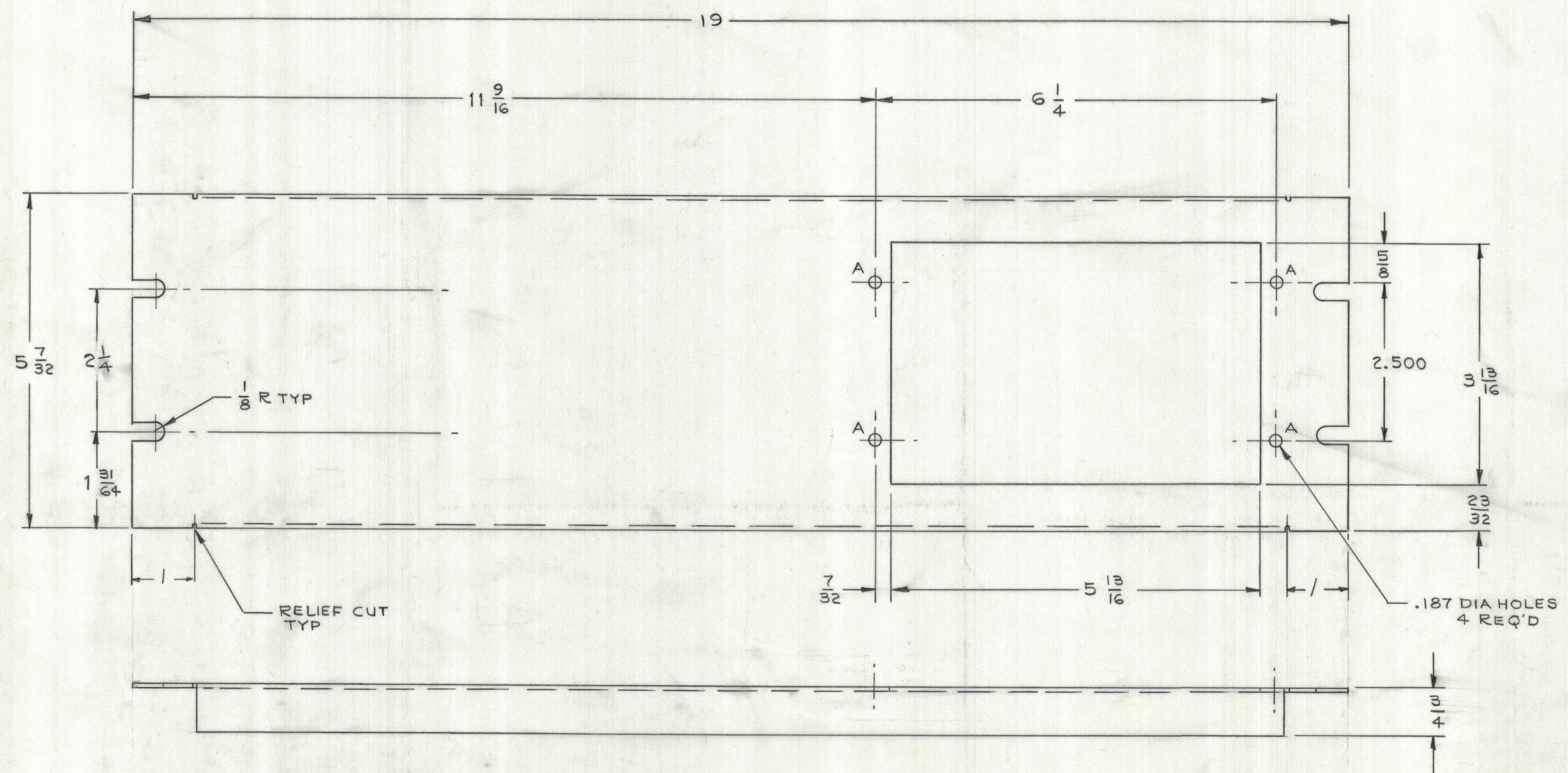


REVISIONS					
ZONE	LTR	DESCRIPTION	DATE	E.M.N.NO	APPD



1	IGD	
QTY / UNIT	MODEL USED ON	ASS'Y NO.
APPLICATION		
CODE		
<small>NOTICE TO PERSONS RECEIVING THIS DRAWING</small> <small>THE TECHNICAL MATERIEL CORPORATION claims proprietary right in the material disclosed hereon. This drawing is issued in confidence for engineering information only and may not be reproduced or used to manufacture anything shown hereon without permission from THE TECHNICAL MATERIEL CORPORATION to the user. This drawing is loaned for mutual assistance and is subject to recall at any time.</small>		

UNLESS OTHERWISE SPECIFIED DIMENSIONS ARE IN INCHES AND INCLUDE CHEMICALLY APPLIED OR PLATED FINISHES	
FINAL APPROVAL <i>SGM</i>	DATE 1-25-68
MECH. DES. <i>R di Hato</i>	DATE 1-4-67
ELECT. DES.	DATE
CHECKED <i>G. ORLANDI</i>	DATE 1-22-68
DRAWN <i>Amiska</i>	DATE 1-9-68
TOLERANCES ON	
DECIMALS .X ± .05 .XX ± .01 .XXX ± .005	FRACTIONS ± 1/64 ANGLES ± 0° -30'
MATERIAL .064 THK 5052 H32 ALUMINUM	
FINISH S114 IRIDITE S115 ENAMEL	

QTY. REQ.	ITEM	PART NO.	DESCRIPTION	SYMBOL
LIST OF MATERIAL				
THE TECHNICAL MATERIEL CORP. MAMARONECK, NEW YORK				
PANEL, FRONT INTERCOM				
SIZE	CODE IDENT. NO.	DWG NO.	ISSUE	
D	82679	MS8159	1	
SCALE FULL			SHEET	OF

MS 8159