

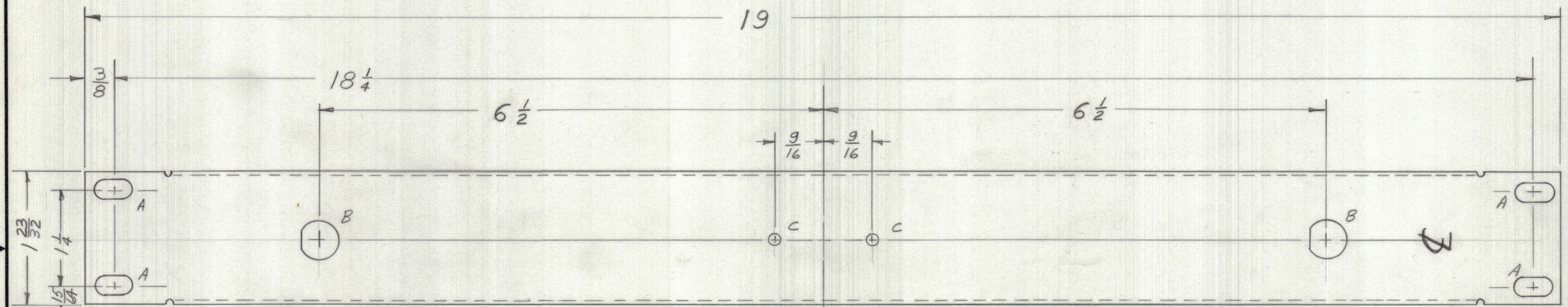
4

3

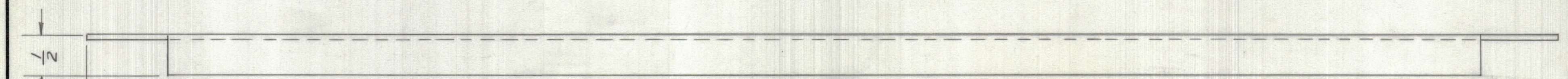
2

1

REVISIONS						
ZONE	LTR	DESCRIPTION	DATE	E.M.N.NO	DRAFT	CHKD APPD



FRONT VIEW
STRAIN RELIEF NOTCH TYPICAL



FINISH NOTES:

- S404 - IRIDITE 14-2 AL-COAT.
- S114 - ZINC CHROMATE PRIMER } FRONT AND
- S115 - SMOOTH GRAY ENAMEL } EDGES ONLY

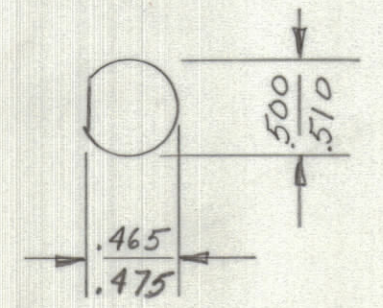
OR
PRIME AND PAINT PER CUSTOMER'S SPECIFICATIONS.

UNLESS OTHERWISE SPECIFIED:

- USE MATERIAL THICKNESS FOR MAXIMUM RADIUS ON ALL BENDS
- ALL ANGULAR BENDS 90 DEGREES
- REMOVE ALL BURRS AND SHARP EDGES
- MOUNT INSERTS AFTER FINISHING

A ~ 1/4 x 1/2 SLOT 4 REQ.
C ~ 9/64 DIA. 2 REQ.

REF: LD 8037



B Detail 2 Req.

1	AX 8024	RACK 11A
QTY / UNIT	MODEL USED ON	ASS'Y NO.
APPLICATION		
CODE		

UNLESS OTHERWISE SPECIFIED DIMENSIONS ARE IN INCHES AND INCLUDE CHEMICALLY APPLIED OR PLATED FINISHES

TOLERANCES ON

DECIMALS	FRACTIONS
.X ± .05	± 1/64
.XX ± .01	ANGLES
.XXX ± .005	± 0° -30'

MATERIAL .064 ALUM
5052-H32

FINISH
SEE NOTE

QTY. REQ.	ITEM	PART NO.	DESCRIPTION	SYMBOL
LIST OF MATERIAL				
<p>FINAL APPROVAL: <i>SM</i> DATE: 1-31-68</p> <p>MECH. DES.: <i>JM</i> DATE: 1-26-68</p> <p>ELECT. DES.: DATE:</p> <p>CHECKED: <i>ED</i> DATE:</p> <p>DRAWN: <i>JM</i> DATE: 1-26-68</p>				
<p>THE TECHNICAL MATERIEL CORP. MAMARONECK, NEW YORK</p> <p>PANEL, FRONT MIXER PANEL</p>				
SCALE	CODE IDENT. NO.	DWG NO.	ISSUE	
	C 82679	MS8190	φ	
SHEET			OF	

NOTICE TO PERSONS RECEIVING THIS DRAWING

THE TECHNICAL MATERIEL CORPORATION claims proprietary right in the material disclosed hereon. This drawing is issued in confidence for engineering information only and may not be reproduced or used to manufacture anything shown hereon without permission from THE TECHNICAL MATERIEL CORPORATION to the user. This drawing is loaned for mutual assistance and is subject to recall at any time.

4

3

2

1

MS8190

φ

A