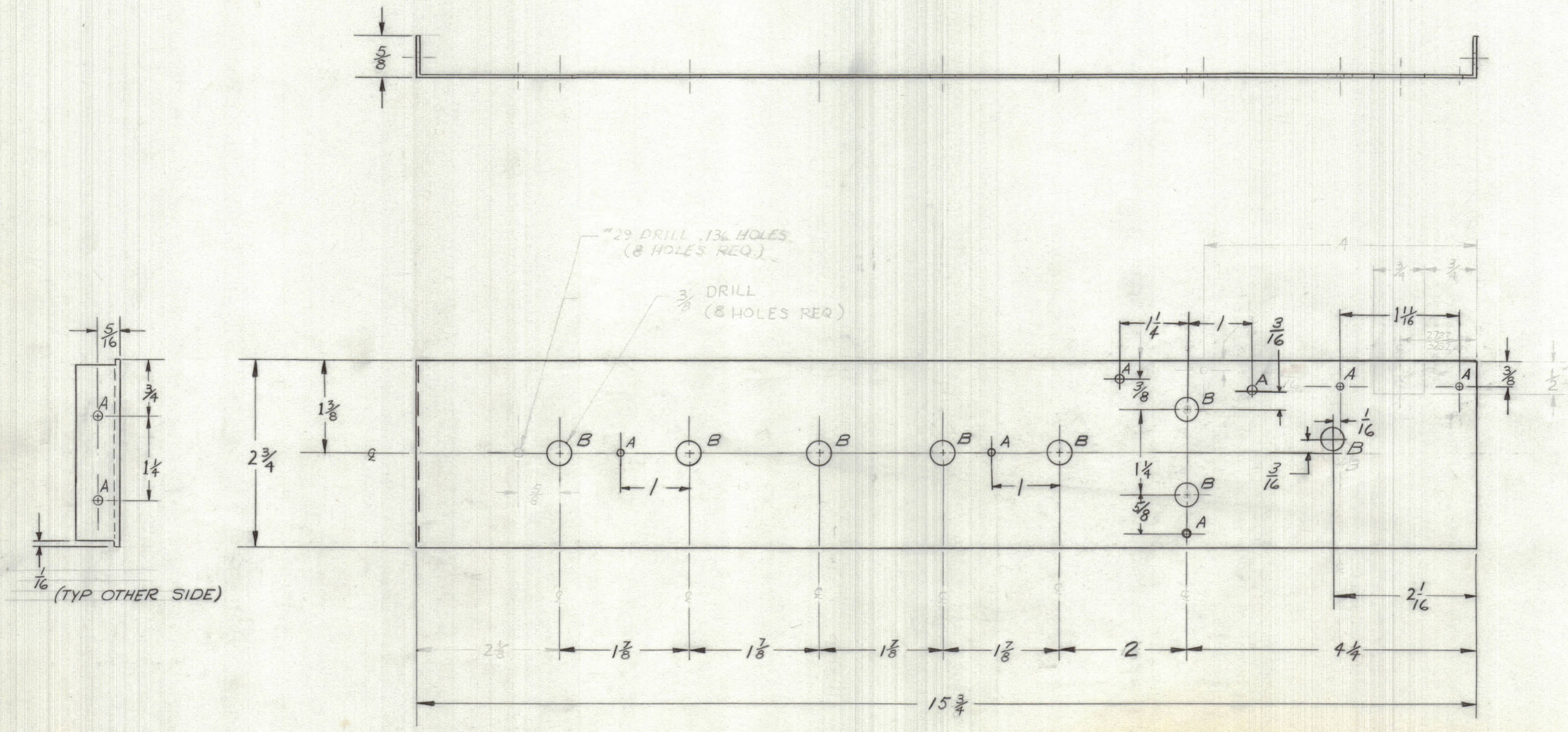


REVISIONS						
ZONE	LTR	DESCRIPTION	DATE	E.M.N.NO	DRAFT	CHKD APPD

HOLES
 A #29 DRILL
 (12 REQ'D)
 B $\frac{3}{8}$ DRILL
 (8 REQ'D)



1	UNIT 19C	
QTY / UNIT	MODEL USED ON	ASS'Y NO.
APPLICATION		
	CODE	

NOTICE TO PERSONS RECEIVING THIS DRAWING
 THE TECHNICAL MATERIEL CORPORATION claims proprietary right in the material disclosed hereon. This drawing is issued in confidence for engineering information only and may not be reproduced or used to manufacture anything shown hereon without permission from THE TECHNICAL MATERIEL CORPORATION to the user. This drawing is loaned for mutual assistance and is subject to recall at any time.

UNLESS OTHERWISE SPECIFIED DIMENSIONS ARE IN INCHES AND INCLUDE CHEMICALLY APPLIED OR PLATED FINISHES

TOLERANCES ON
 DECIMALS .X ± .05
 .XX ± .01
 .XXX ± .005
 FRACTIONS ± 1/64
 ANGLES ± 0° -30'

MATERIAL 5052 H32 .064 ALUM.
 FINISH

QTY. REQ.	ITEM	PART NO.	DESCRIPTION	SYMBOL
LIST OF MATERIAL				
FINAL APPROVAL <i>SJM</i>		DATE 5/28/68	THE TECHNICAL MATERIEL CORP. MAMARONECK, NEW YORK	
MECH. DES.		DATE	COMPONENT MOUNTING CONTROLS, FRONT PANELS	
ELECT. DES.		DATE		
CHECKED <i>LEE CABOT</i>		DATE 5-28-68		
DRAWN <i>C. Grob</i>		DATE 5/11/68		
SIZE	CODE IDENT.NO.	DWG NO.	ISSUE	
C	82679	MS8210	∅	
SCALE 3/4" = 1"			SHEET 1 OF 1	