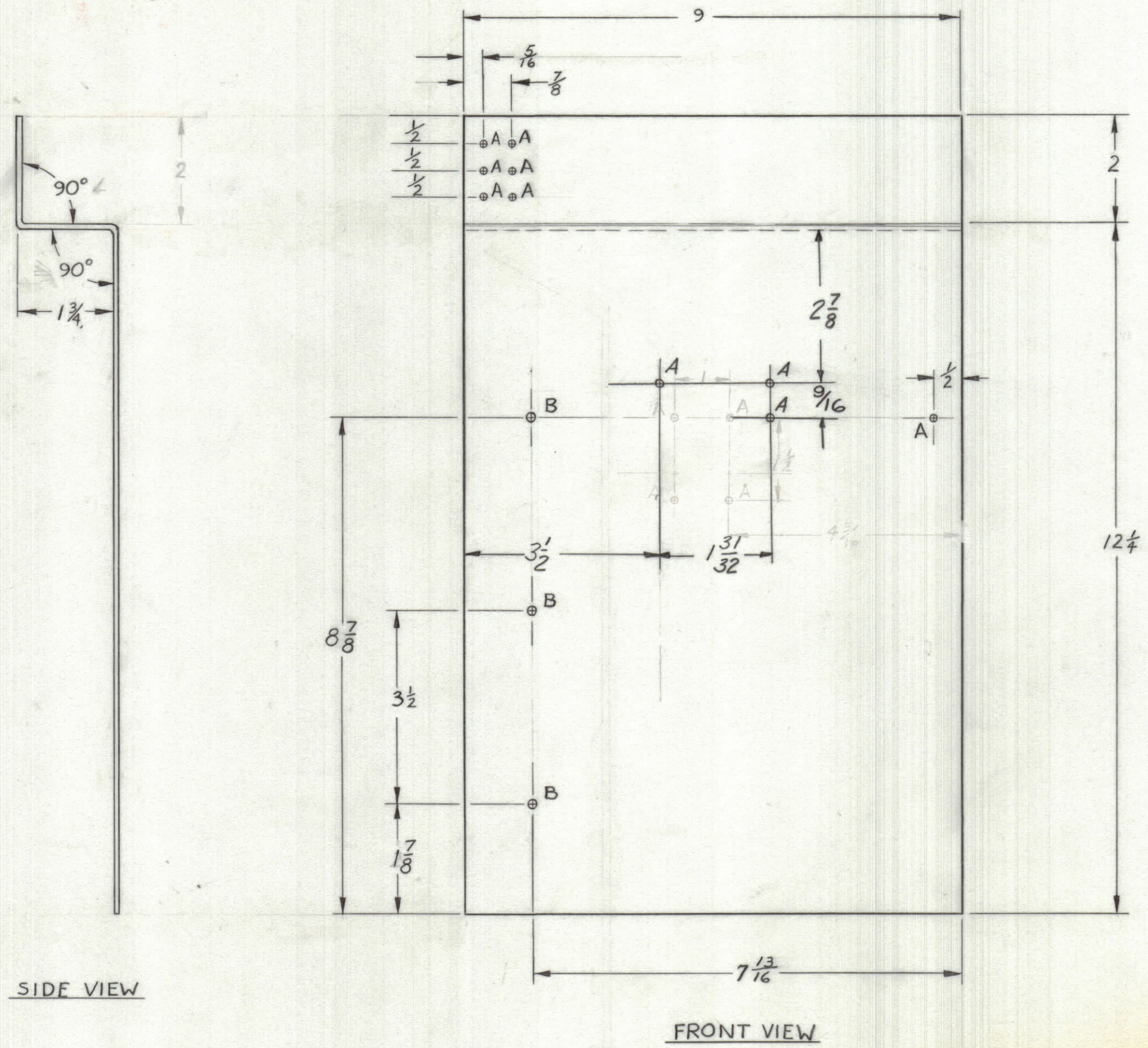


REVISIONS						
ZONE	LTR	DESCRIPTION	DATE	E.M.N.NO	DRAFT	CHKD APPD



**HOLE GUIDE**  
 "A" HOLES  $\frac{3}{32}$ " DIA. DRILL  
 (10 HOLES REQ.)  
 "B" HOLES  $\frac{7}{16}$ " DIA. DRILL  
 (3 HOLES REQ.)

SIDE VIEW

FRONT VIEW

1	UNIT 19C	ASS'Y NO.
QTY / UNIT	MODEL USED ON	
APPLICATION		
	CODE	
NOTICE TO PERSONS RECEIVING THIS DRAWING THE TECHNICAL MATERIEL CORPORATION claims proprietary right in the material disclosed hereon. This drawing is issued in confidence for engineering information only and may not be reproduced or used to manufacture anything shown hereon without permission from THE TECHNICAL MATERIEL CORPORATION to the user. This drawing is loaned for mutual assistance and is subject to recall at any time.		

UNLESS OTHERWISE SPECIFIED DIMENSIONS ARE IN INCHES AND INCLUDE CHEMICALLY APPLIED OR PLATED FINISHES

TOLERANCES ON  
 DECIMALS .X ± .05  
 .XX ± .01  
 .XXX ± .005

FRACTIONS ± 1/64  
 ANGLES ± 0° -30'

MATERIAL 5052 H32 .064 ALUM.  
 FINISH 3A04 IRIDITE

QTY. REQ.	ITEM	PART NO.	DESCRIPTION	SYMBOL
LIST OF MATERIAL				
FINAL APPROVAL <i>SJM</i>		DATE <i>5/28/68</i>	THE TECHNICAL MATERIEL CORP. MAMARONECK, NEW YORK	
MECH. DES.		DATE	SIDE PANEL, RIGHT	
ELECT. DES.		DATE		
CHECKED <i>CSG</i>		DATE <i>5/22/68</i>		
DRAWN <i>C. Grob</i>		DATE <i>3/14/68</i>		
SIZE	CODE	IDENT.NO.	DWG NO.	ISSUE
C	82679	MS8212		φ
SCALE $\frac{1}{2}$ " = 1"				SHEET 1 OF 1

MS8212 φ B