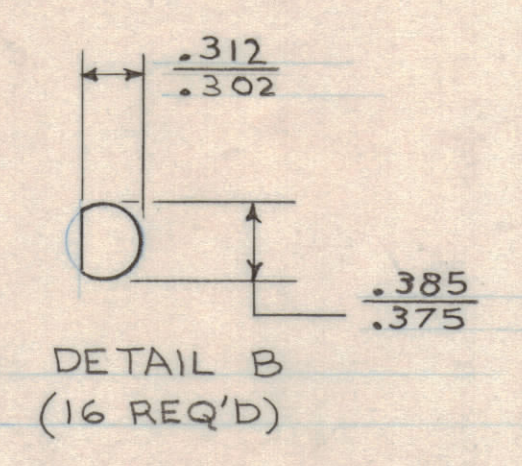
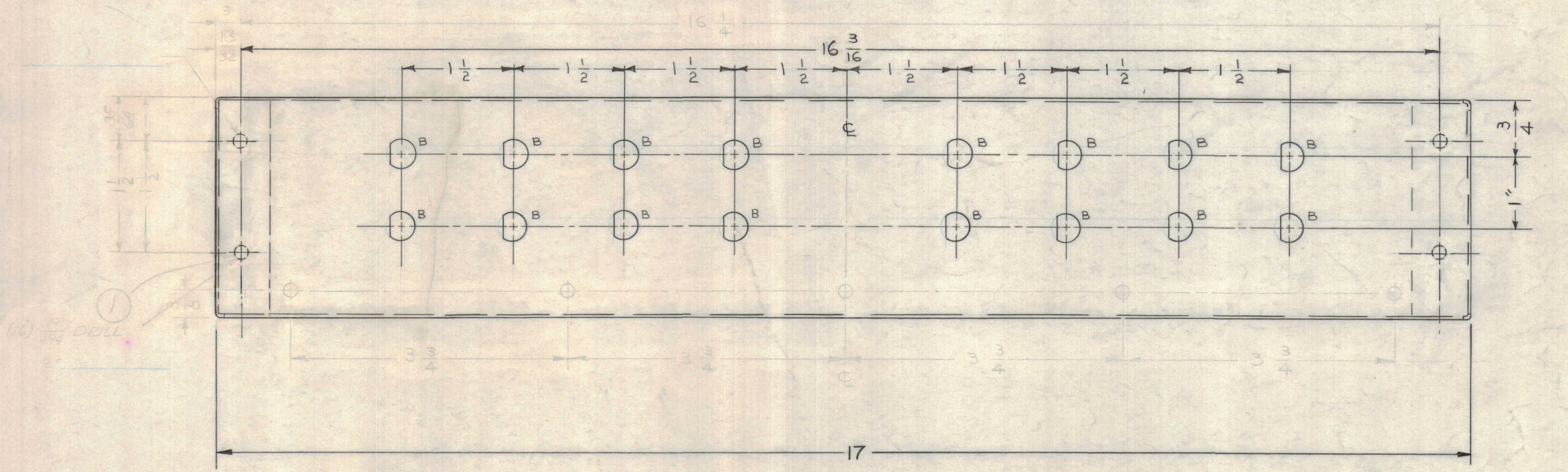
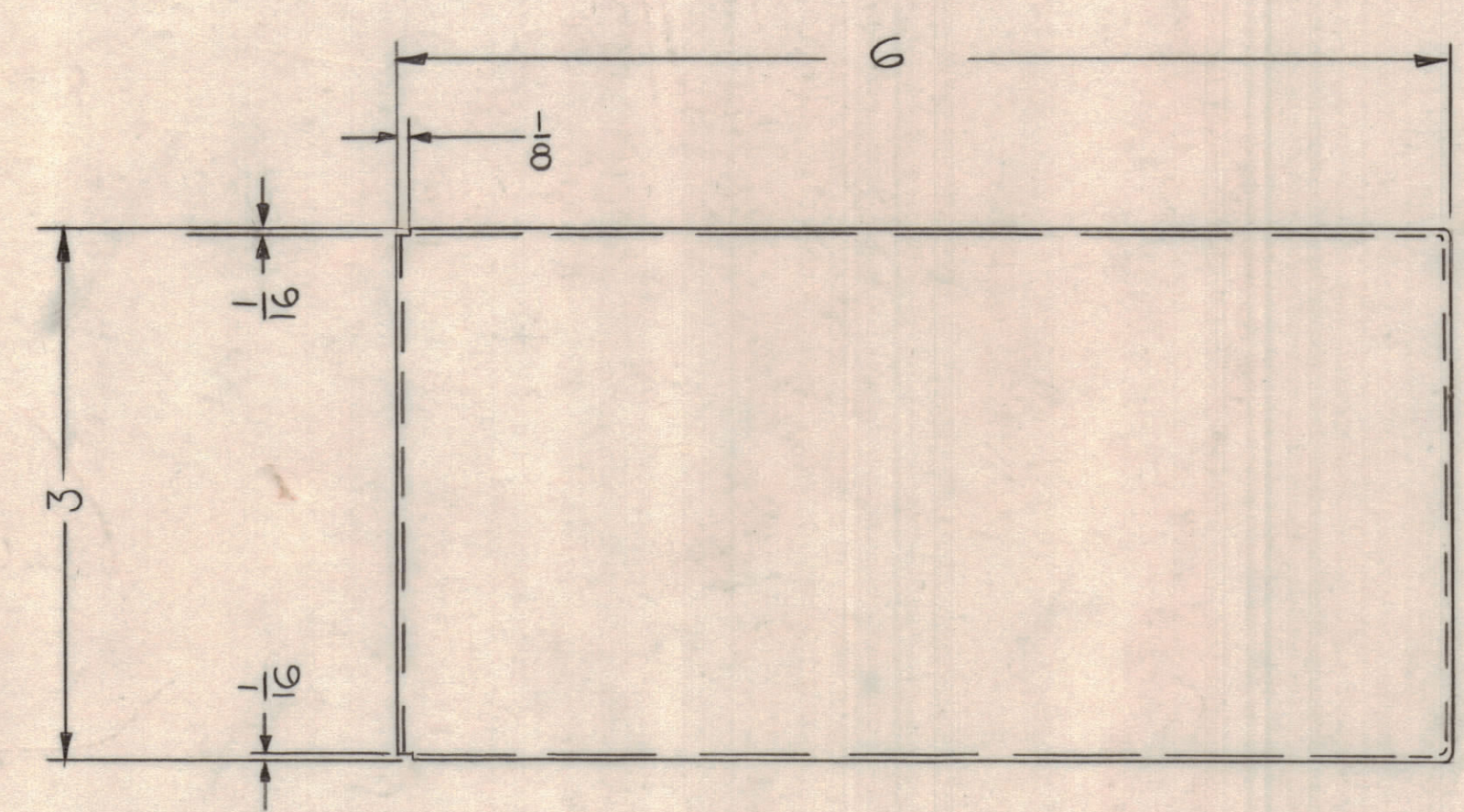
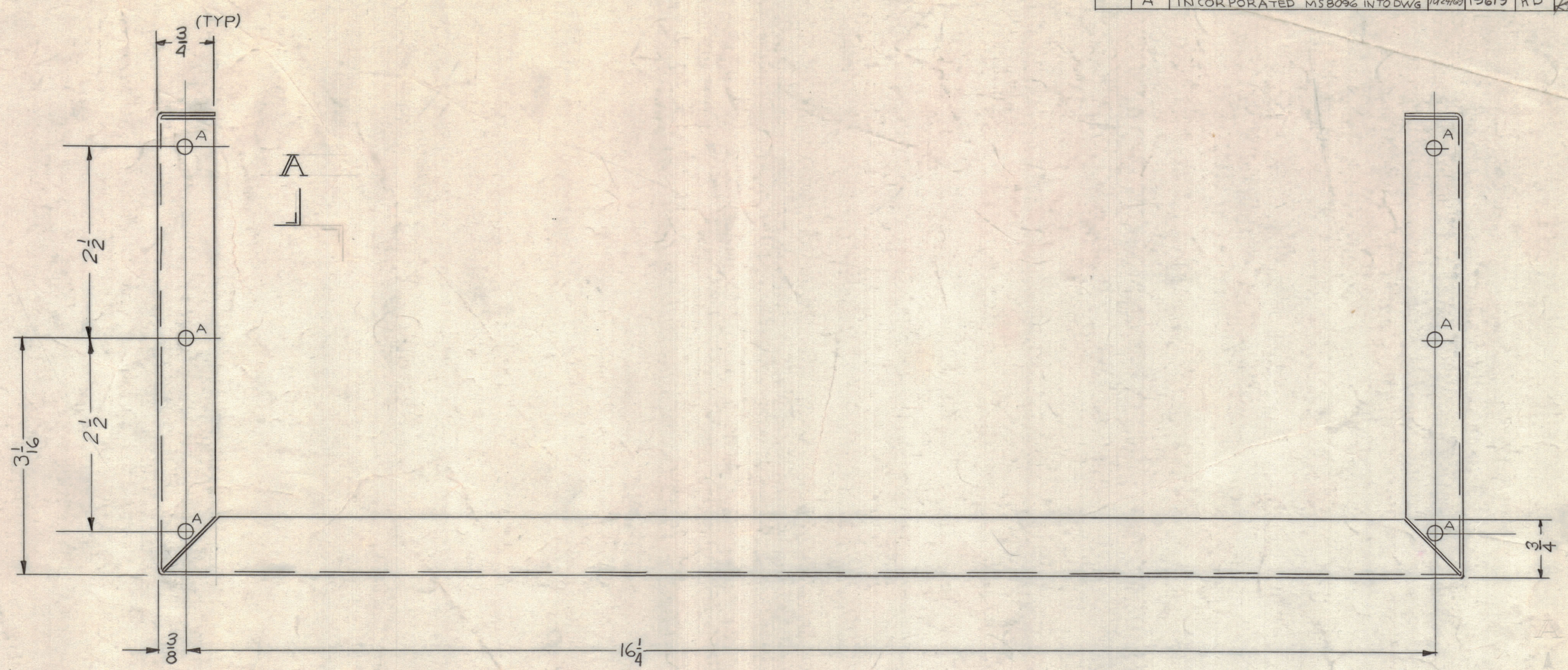
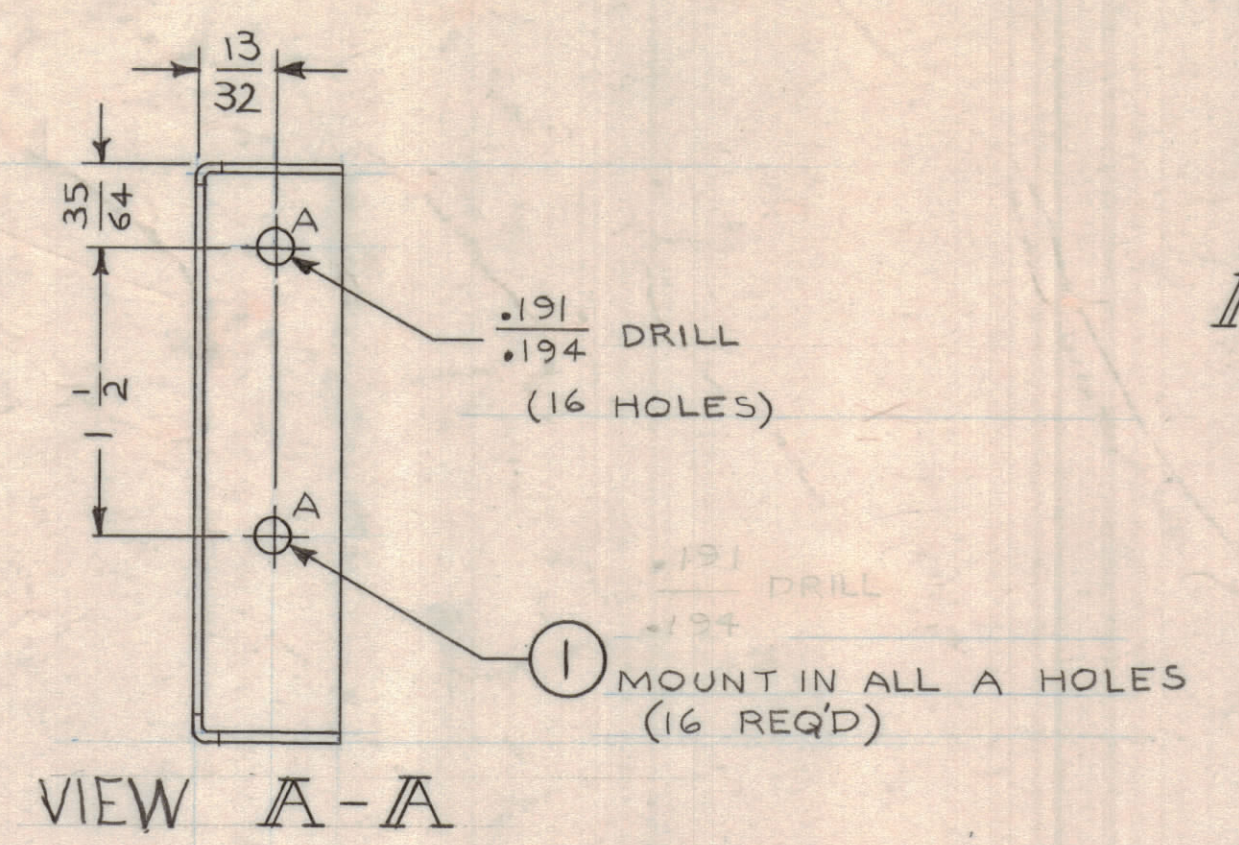


REVISIONS						
ZONE	LTR	DESCRIPTION	DATE	E.M.N.NO	DRAFT	CHKD APPD
	A	INCORPORATED MS8096 INTO DWG	1/22/68	19619	KD	<i>[Signature]</i>



AX8044		
QTY / UNIT	MODEL USED ON	ASS'Y NO.
APPLICATION		
CODE		
NOTICE TO PERSONS RECEIVING THIS DRAWING		
THE TECHNICAL MATERIEL CORPORATION claims proprietary right in the material disclosed hereon. This drawing is issued in confidence for engineering information only and may not be reproduced or used to manufacture anything shown hereon without permission from THE TECHNICAL MATERIEL CORPORATION to the user. This drawing is loaned for mutual assistance and is subject to recall at any time.		

UNLESS OTHERWISE SPECIFIED DIMENSIONS ARE IN INCHES AND INCLUDE CHEMICALLY APPLIED OR PLATED FINISHES	
TOLERANCES ON	
DECIMALS	FRACTIONS
.X ± .05	± 1/64
.XX ± .01	ANGLES
.XXX ± .005	± 0° - 30'
MATERIAL .064 ALUM	
5052-H32	
FINISH 5404-IRIDITE	

16	1	NPT129-632-3	NUT, RND, SWAGE TYPE	A
QTY. REQ.	ITEM	PART NO.	DESCRIPTION	SYMBOL
LIST OF MATERIAL				
FINAL APPROVAL <i>[Signature]</i>		DATE 4-20-68		
MECH. DES.		DATE		
ELECT. DES.		DATE		
CHECKED <i>[Signature]</i>		DATE 4-29-68		
DRAWN <i>[Signature]</i>		DATE 3-20-68		
THE TECHNICAL MATERIEL CORP. MAMARONECK, NEW YORK				
WRAPAROUND S.P.G. STD. SEL. SWITCH				
SIZE	CODE IDENT. NO.	DWG NO.	ISSUE	
D	82679	MS8217	A	
SCALE FULL				SHEET OF