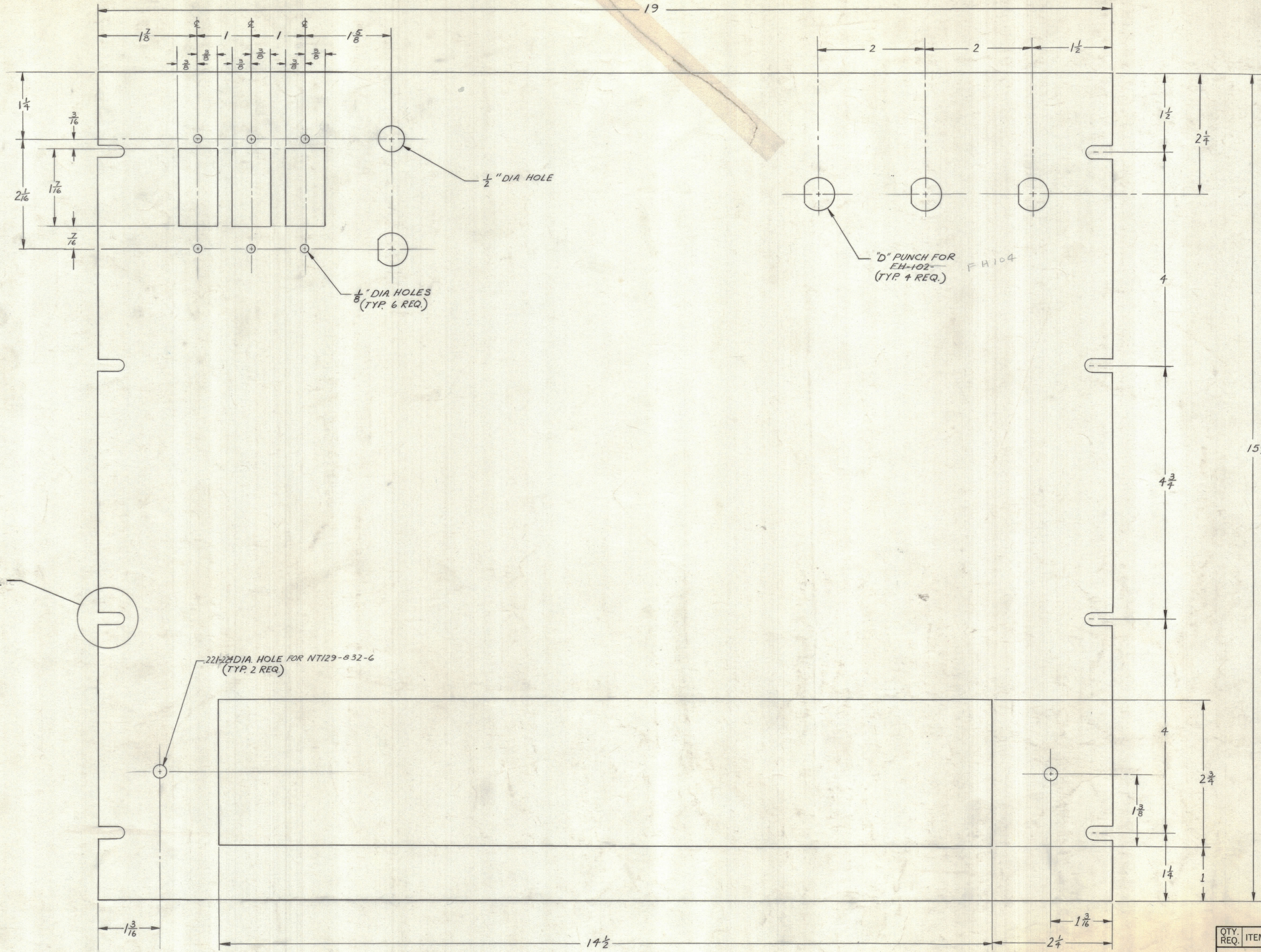
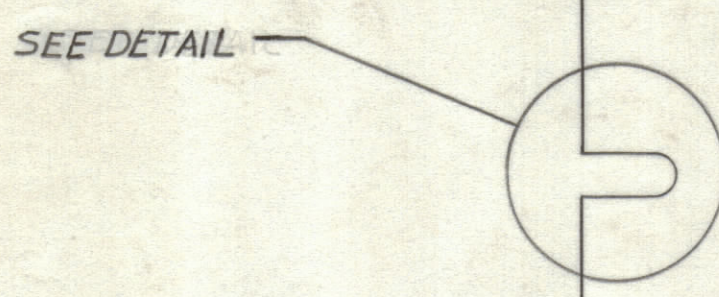
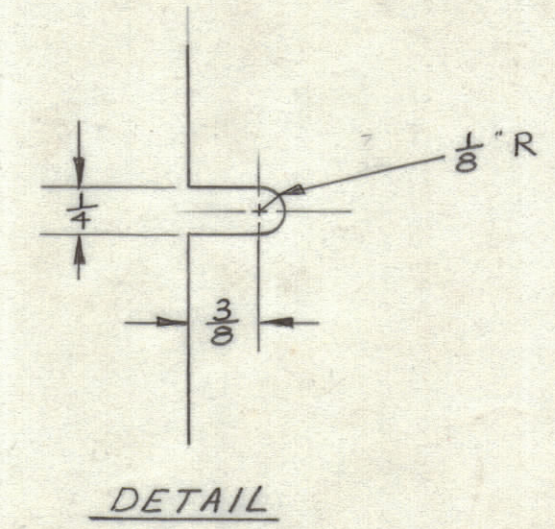


| ZONE | | LTR | DESCRIPTION | DATE | E.M.N.NO | DRAFT | CHKD | APPD |
|------|--|-----|---------------------------------|---------|----------|-------|---------|------|
| X | | | DWG. No WAS 40W1207085 | 8-23-68 | | | C. Grab | |
| 8 | | | ORIGINAL RELEASE FOR PRODUCTION | 11/2/69 | | | | |



625
635
585
595
"D" HOLE DETAIL



.2212 DIA. HOLE FOR NT129-832-6
(TYP. 2 REQ.)

"D" PUNCH FOR
EH-102
(TYP. 4 REQ.) FH104

1/2" DIA HOLE

1/8" DIA HOLES
(TYP. 6 REQ.)

| QTY. REQ. | ITEM | PART NO. | DESCRIPTION | SYMBOL |
|--|-------|------------|-------------|--------------|
| LIST OF MATERIAL | | | | |
| THE TECHNICAL MATERIEL CORP. MAMARONECK, NEW YORK | | | | |
| FRONT PANEL | | | | |
| SIZE | CODE | IDENT. NO. | DWG. NO. | ISSUE |
| D | 82679 | | MS8265 | |
| SCALE | | | FULL 1:1" | SHEET 1 OF 1 |

| | | |
|---|---------------------------|------|
| UNLESS OTHERWISE SPECIFIED DIMENSIONS ARE IN INCHES AND INCLUDE CHEMICALLY APPLIED OR PLATED FINISHES | FINAL APPROVAL 8/12/69 | DATE |
| | MECH. DES. 5-20-69 | DATE |
| | ELECT. DES. 8-1-69 | DATE |
| | CHECKED C. Grab | DATE |
| | DRAWN | DATE |

| | | |
|---|---------------|-----------|
| 1 | SPT-3KVHF | Ax8070 |
| QTY / UNIT | MODEL USED ON | ASS'Y NO. |
| APPLICATION | | |
| CODE | | |
| NOTICE TO PERSONS RECEIVING THIS DRAWING THE TECHNICAL MATERIEL CORPORATION claims proprietary right in the material disclosed hereon. This drawing is issued in confidence for engineering information only and may not be reproduced or used to manufacture anything shown hereon without permission from THE TECHNICAL MATERIEL CORPORATION to the user. This drawing is loaned for mutual assistance and is subject to recall at any time. | | |
| MATERIAL .125 THK 5052 H32 ALUM FINISH S704 YEL. IRIDITE S119 ZINC CHROMATE 521 TMC GREY | | |