

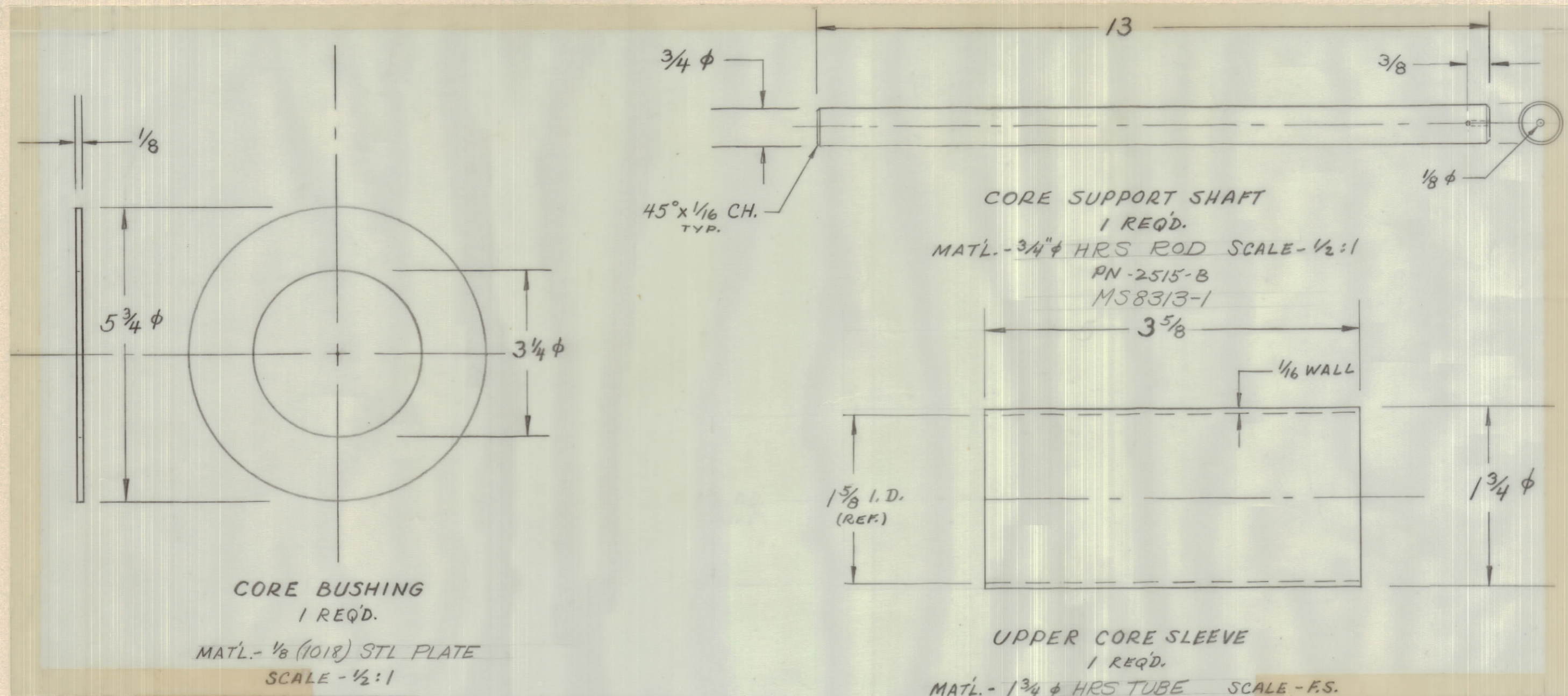
4

3

2

1

REVISIONS						
ZONE	LTR	DESCRIPTION	DATE	E.M.N.NO	DRAFT	CHKD APPD
	Ø	ORIGINAL RELEASE FOR PRODUCTION	5/2/69	—	GE	JD



CORE BUSHING
1 REQ'D.
MAT'L. - 1/8 (1018) STL PLATE
SCALE - 1/2:1
PN-2515-A
MS8313-2

CORE SUPPORT SHAFT
1 REQ'D.
MAT'L. - 3/4" HRS ROD SCALE - 1/2:1
PN-2515-B
MS8313-1

UPPER CORE SLEEVE
1 REQ'D.
MAT'L. - 1 3/4" HRS TUBE SCALE - F.S.
PN-2515-C
MS8313-3

ASSEMBLY PIN
1 REQ'D.
MAT'L. - 1/8" HRS ROD SCALE - F.S.
PN-2515-D
MS8313-4

QTY. REQ.	ITEM	PART NO.	DESCRIPTION	SYMBOL
LIST OF MATERIAL				
THE TECHNICAL MATERIEL CORP. MAMARONECK, NEW YORK				
CORE & SLEEVE DETAILS / S				
FINAL APPROVAL <i>gmm</i> DATE 5/19/69			MECH. DES. DATE	
ELECT. DES. DATE			CHECKED <i>SMB</i> DATE 5-9-69	
DRAWN <i>VR</i> DATE 2/7-68			MATERIAL NOTED	
FINISH REF: AX8086			SIZE C	CODE IDENT. NO. 82679
			DWG NO. MS-8313	ISSUE Ø
			SCALE	SHEET OF

1 EACH	ATW-1	AX8086
QTY / UNIT	MODEL USED ON	ASS'Y NO.
APPLICATION		
CODE		
NOTICE TO PERSONS RECEIVING THIS DRAWING		
<small>THE TECHNICAL MATERIEL CORPORATION claims proprietary right in the material disclosed hereon. This drawing is issued in confidence for engineering information only and may not be reproduced or used to manufacture anything shown hereon without permission from THE TECHNICAL MATERIEL CORPORATION to the user. This drawing is loaned for mutual assistance and is subject to recall at any time.</small>		

4

3

2

1