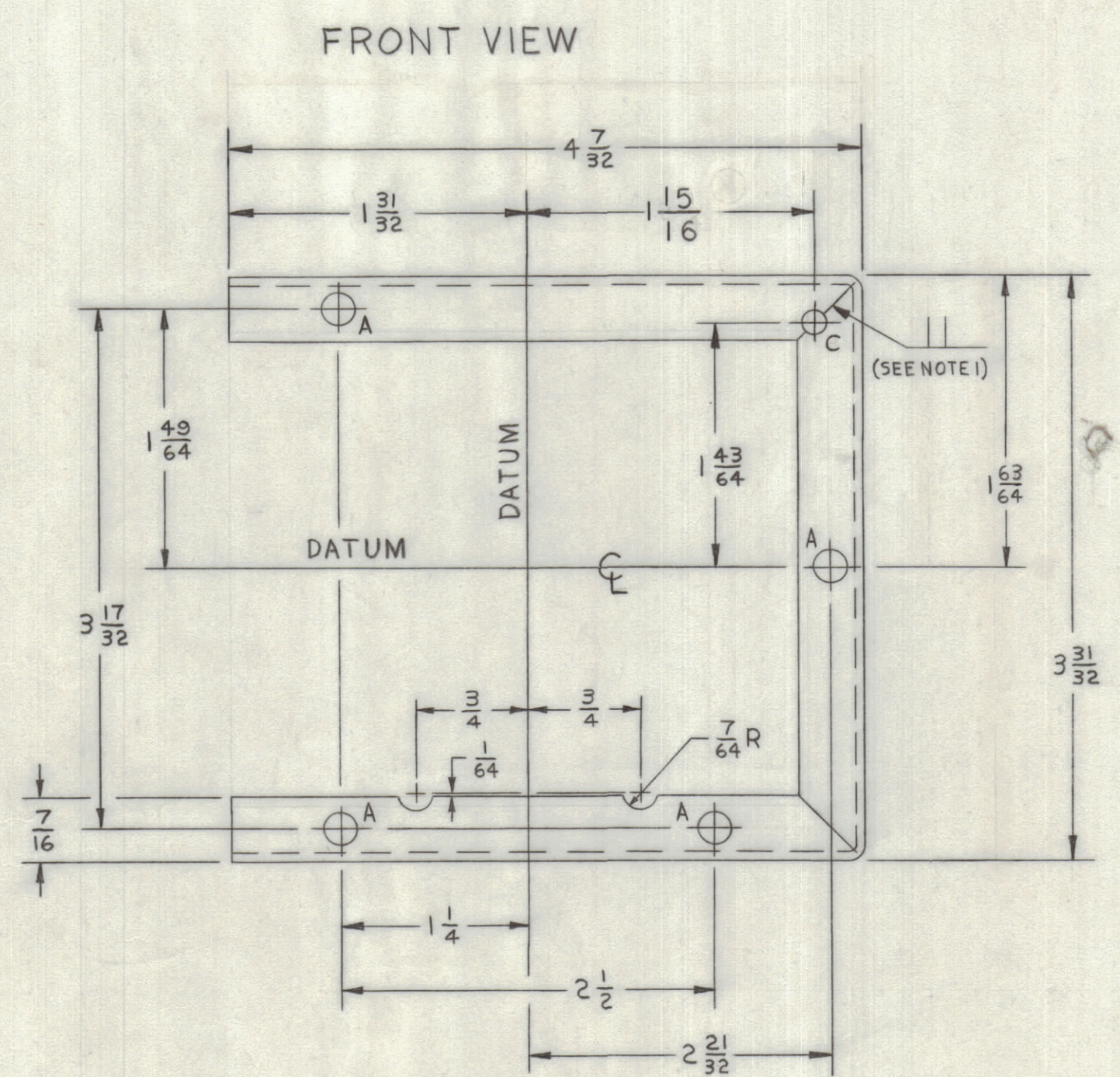
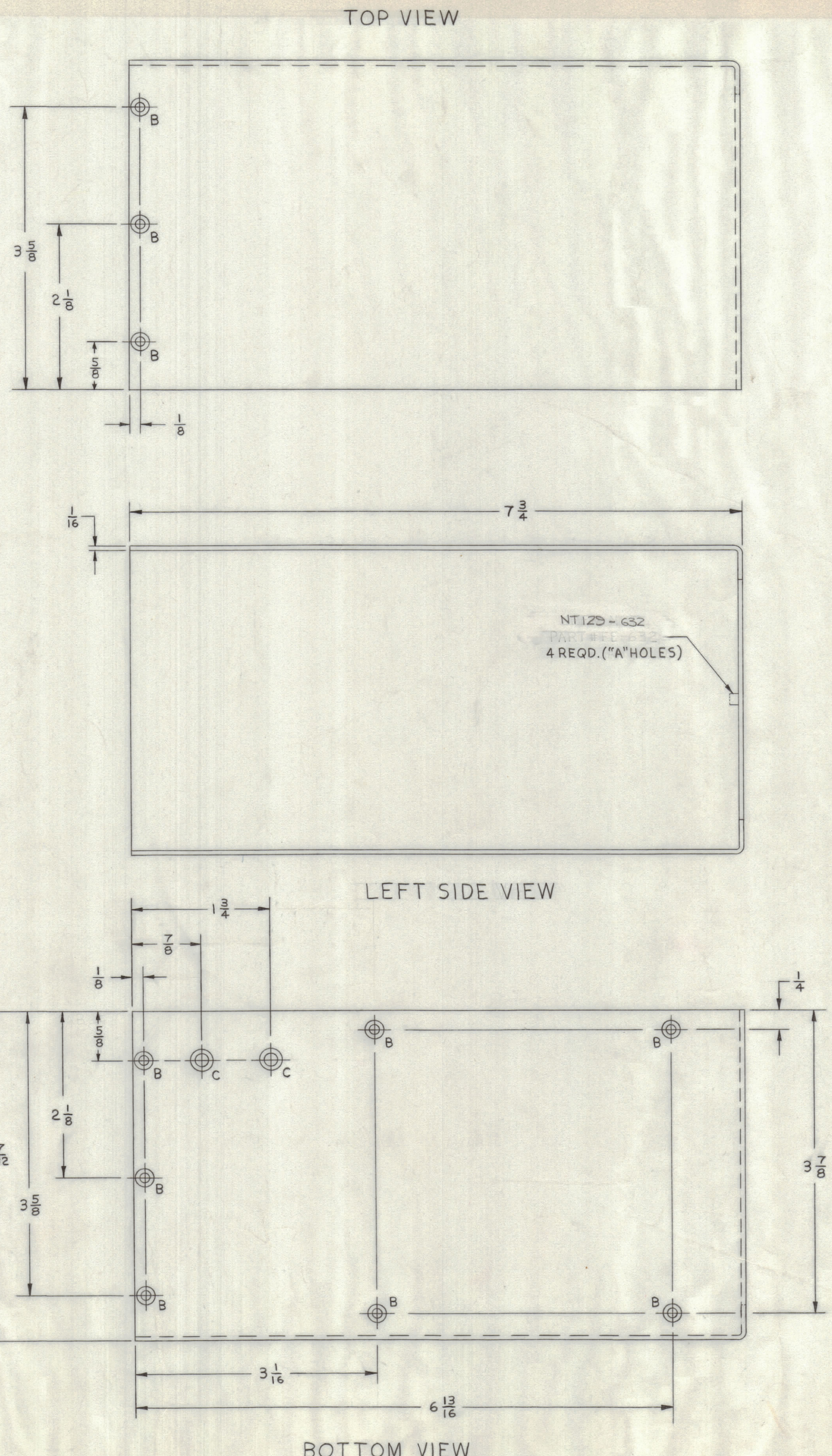


REVISIONS							
ZONE	LTR	DESCRIPTION	DATE	E.M.N.NO	DRAFT	CHKD	APPD
	X	DWG. No. WA-40M1207123	8-21-61		C-6108		
	φ	ORIGINAL RELEASE FOR PRODUCTION	9/15/67				



HOLE SCHEDULE	
A	0.213-0.216 DIA.
B*	#32 DRILL/O.116 DIA.
C**	#27 DRILL/O.144 DIA.

\* 0.225 DIA. ±.005 C'SK AT 82°  
\*\* 0.279 DIA. ±.005 C'SK AT 82° (SEE NOTE 1)

NOTES

- WELD SEAM AND FILE WELD FLUSH WITH FLANGE BEFORE LOCATING AND DRILLING HOLE "C". THIS HOLE IS NOT TO BE COUNTERSUNK.
- BREAK ALL SHARPEGES AND REMOVE BURRS.

QTY / UNIT	MODEL USED ON	ASS'Y NO.
1	SPT-3KVHF	AP-137
APPLICATION 48056		
CODE		

UNLESS OTHERWISE SPECIFIED DIMENSIONS ARE IN INCHES AND INCLUDE CHEMICALLY APPLIED OR PLATED FINISHES

TOLERANCES ON  
 DECIMALS .X ± .05  
 .XX ± .01  
 .XXX ± .005  
 FRACTIONS ± 1/64  
 ANGLES ± 0°-30'

MATERIAL 1/16 ALUM ALLOY 5052-H32  
 FINISH CAUSTIC ETCH AND GOLD IRIDITE

QTY. REQ.	ITEM	PART NO.	DESCRIPTION	SYMBOL
LIST OF MATERIAL				
THE TECHNICAL MATERIEL CORP. MAMARONECK, NEW YORK				
CHASSIS FOR POWER SUPPLY				
SIZE	CODE	IDENT. NO.	DWG. NO.	ISSUE
D	82679		40MS8357	φ
SCALE	1:1		SHEET	OF

NOTICE TO PERSONS RECEIVING THIS DRAWING  
 THE TECHNICAL MATERIEL CORPORATION claims proprietary right in the material disclosed hereon. This drawing is issued in confidence for engineering information only and may not be reproduced or used to manufacture anything shown hereon without permission from THE TECHNICAL MATERIEL CORPORATION to the user. This drawing is loaned for mutual assistance and is subject to recall at any time.