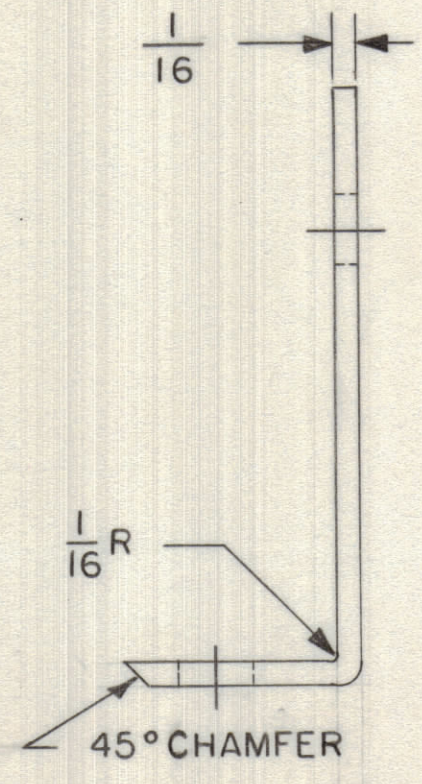
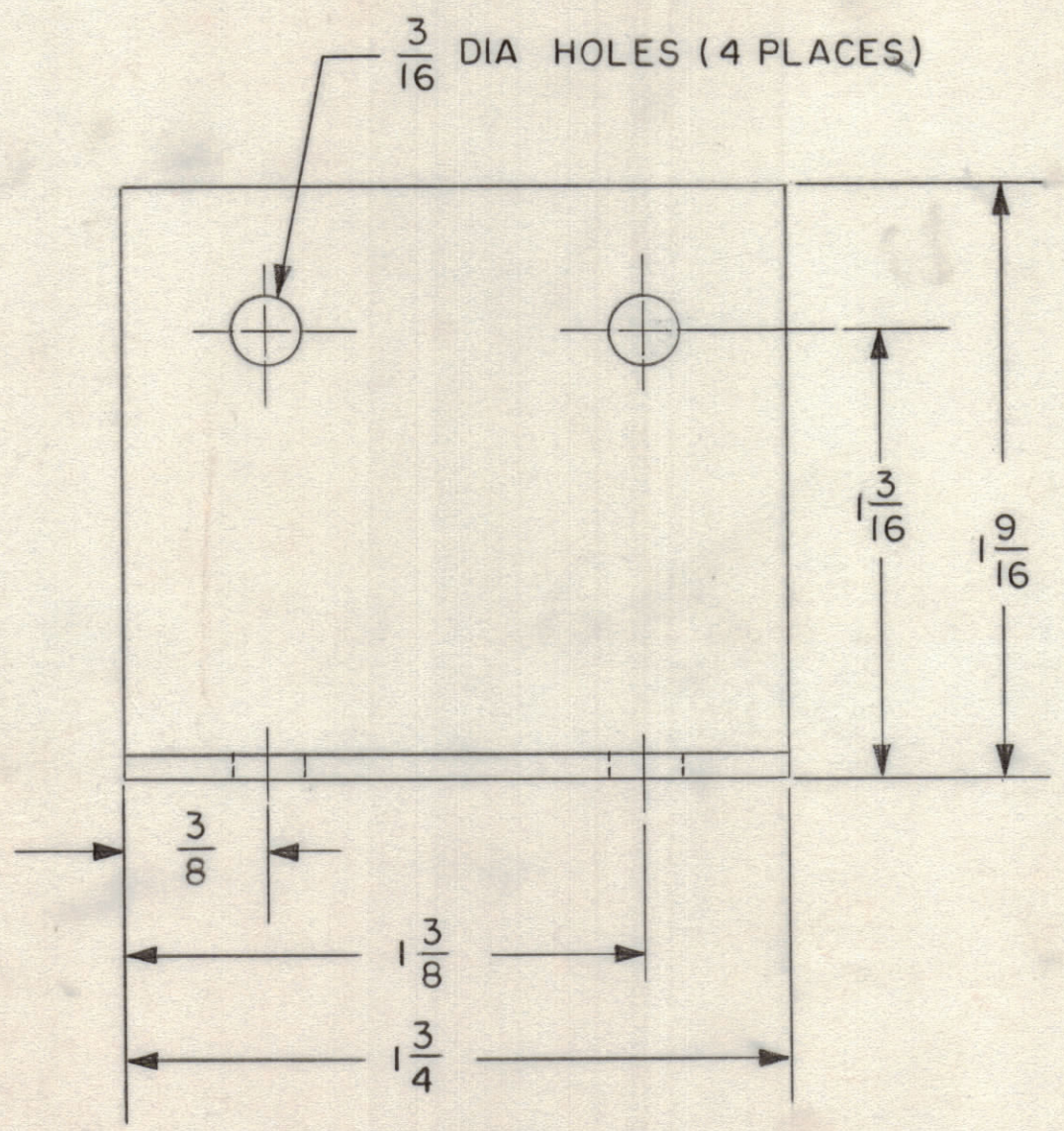
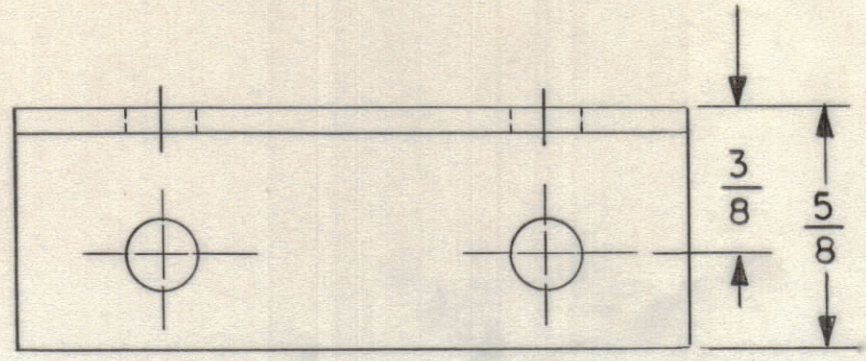


REVISIONS							
ZONE	LTR	DESCRIPTION	DATE	E.M.N.NO	DRAFT	CHKD	APPD
	X	DWG. No 40M12C7199	8/10/68		C. GREGG		
	Ø	ORIGINAL RELEASE FOR PRODUCTION	8/27/69		CG		



2	SPT-3KVHF	AX8038
QTY / UNIT	MODEL USED ON	ASS'Y NO.
APPLICATION A8098		
CODE		

NOTICE TO PERSONS RECEIVING THIS DRAWING  
 THE TECHNICAL MATERIEL CORPORATION claims proprietary right in the material disclosed hereon. This drawing is issued in confidence for engineering information only and may not be reproduced or used to manufacture anything shown hereon without permission from THE TECHNICAL MATERIEL CORPORATION to the user. This drawing is loaned for mutual assistance and is subject to recall at any time.

UNLESS OTHERWISE SPECIFIED DIMENSIONS ARE IN INCHES AND INCLUDE CHEMICALLY APPLIED OR PLATED FINISHES

TOLERANCES ON	
DECIMALS	FRACTIONS
.X ± .05	± 1/64
.XX ± .01	ANGLES
.XXX ± .005	± 0° -30'

MATERIAL 1/16 ALUM  
 ALLOY 5052 H32  
 FINISH S404  
 GOLD IRIDITE

QTY. REQ.	ITEM	PART NO.	DESCRIPTION	SYMBOL
LIST OF MATERIAL				
THE TECHNICAL MATERIEL CORP. MAMARONECK, NEW YORK				
FEED BACK BOARD SUPPORT BRACKET VIDEO MODULATOR				
MATERIAL 1/16 ALUM			SIZE	ISSUE
FINISH S404 GOLD IRIDITE			CODE IDENT.NO. C 82679	DWG NO. MS8389
			SCALE 2:1	SHEET 1 OF 1

FINAL APPROVAL J.F.P. OXB	DATE 4-26-68
MECH. DES. P. T.	DATE 4-5-68
ELECT. DES.	DATE 8-12-69
CHECKED R. Smith	DATE 4-26-68
DRAWN L. McDOWELL	DATE 4-26-68