

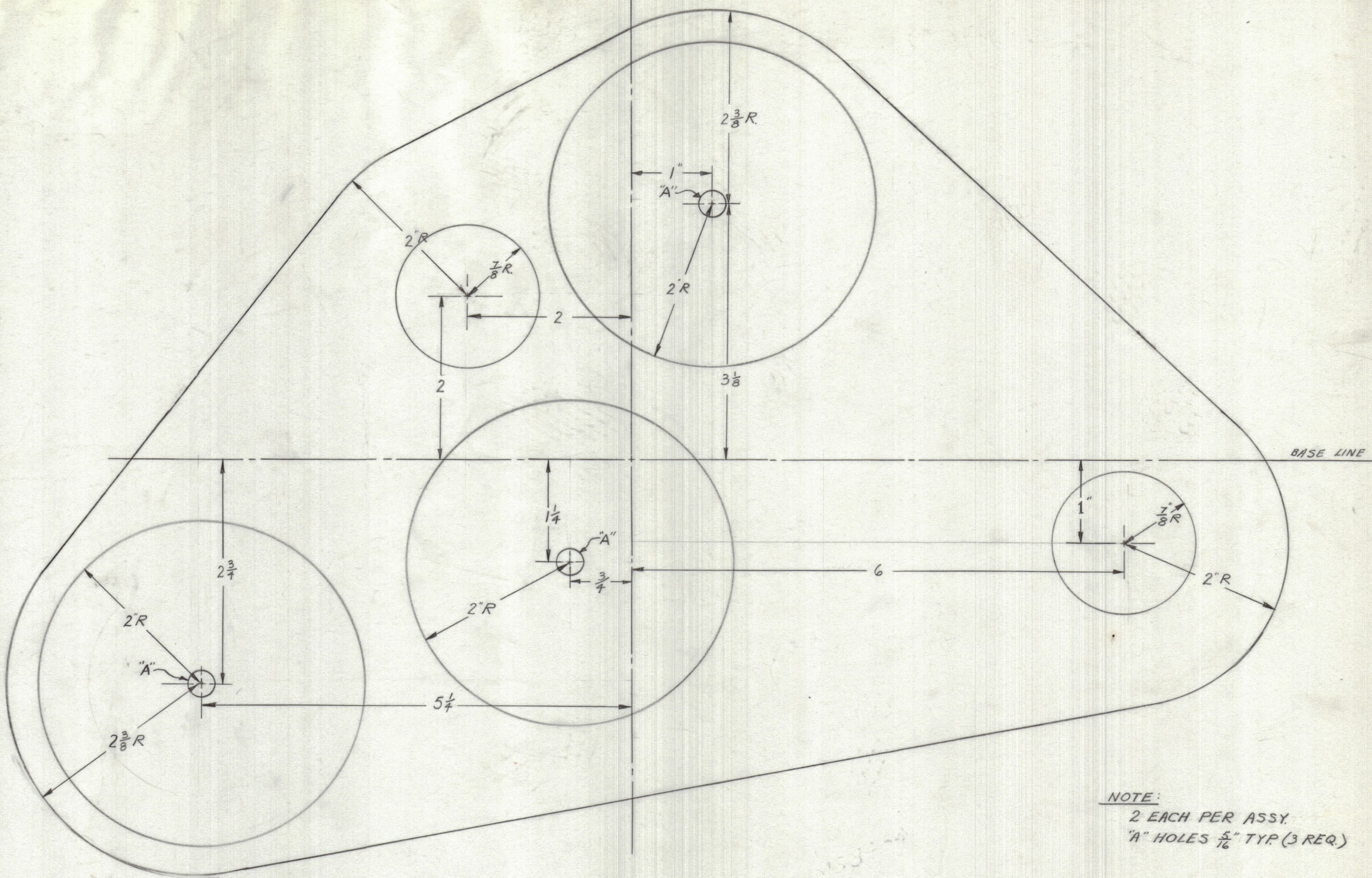
4

3

2

1

REVISIONS							
ZONE	LTR	DESCRIPTION	DATE	E.M.N.NO	DRAFT	CHKD	APPD
	Ø	ORIGINAL RELEASE FOR PRODUCTION	8/20/70		RA		



NOTE:  
2 EACH PER ASSY.  
"A" HOLES 5/16" TYP (3 REQ.)

2	UNIT 4 PYLON ASSY	
QTY / UNIT	MODEL USED ON	ASS'Y NO.
APPLICATION		
	CODE	

NOTICE TO PERSONS RECEIVING THIS DRAWING  
THE TECHNICAL MATERIEL CORPORATION claims proprietary right in the material disclosed hereon. This drawing is issued in confidence for engineering information only and may not be reproduced or used to manufacture anything shown hereon without permission from THE TECHNICAL MATERIEL CORPORATION to the user. This drawing is loaned for mutual assistance and is subject to recall at any time.

UNLESS OTHERWISE SPECIFIED  
DIMENSIONS ARE IN INCHES  
AND INCLUDE CHEMICALLY APPLIED  
OR PLATED FINISHES

TOLERANCES ON

DECIMALS	FRACTIONS
.X ± .05	± 1/64
.XX ± .01	ANGLES
.XXX ± .005	± 0° -30'

MATERIAL .250 THK  
G10 MELAMINE

FINISH

QTY. REQ.	ITEM	PART NO.	DESCRIPTION	SYMBOL
LIST OF MATERIAL				
FINAL APPROVAL: <i>S. Colandi</i> DATE: 8/19/70 MECH. DES. DATE: ELECT. DES. DATE: CHECKED DATE: DRAWN: C. Grob DATE: 11/3/68				
<b>THE TECHNICAL MATERIEL CORP.</b> MAMARONECK, NEW YORK				
<b>ANTENNA PYLON PULLEY RETAINER</b>				
SIZE	CODE	IDENT. NO.	DWG NO.	ISSUE
C	82679	MS8435		Ø
SCALE FULL SCALE				SHEET 1 OF 1

4

3

2

1