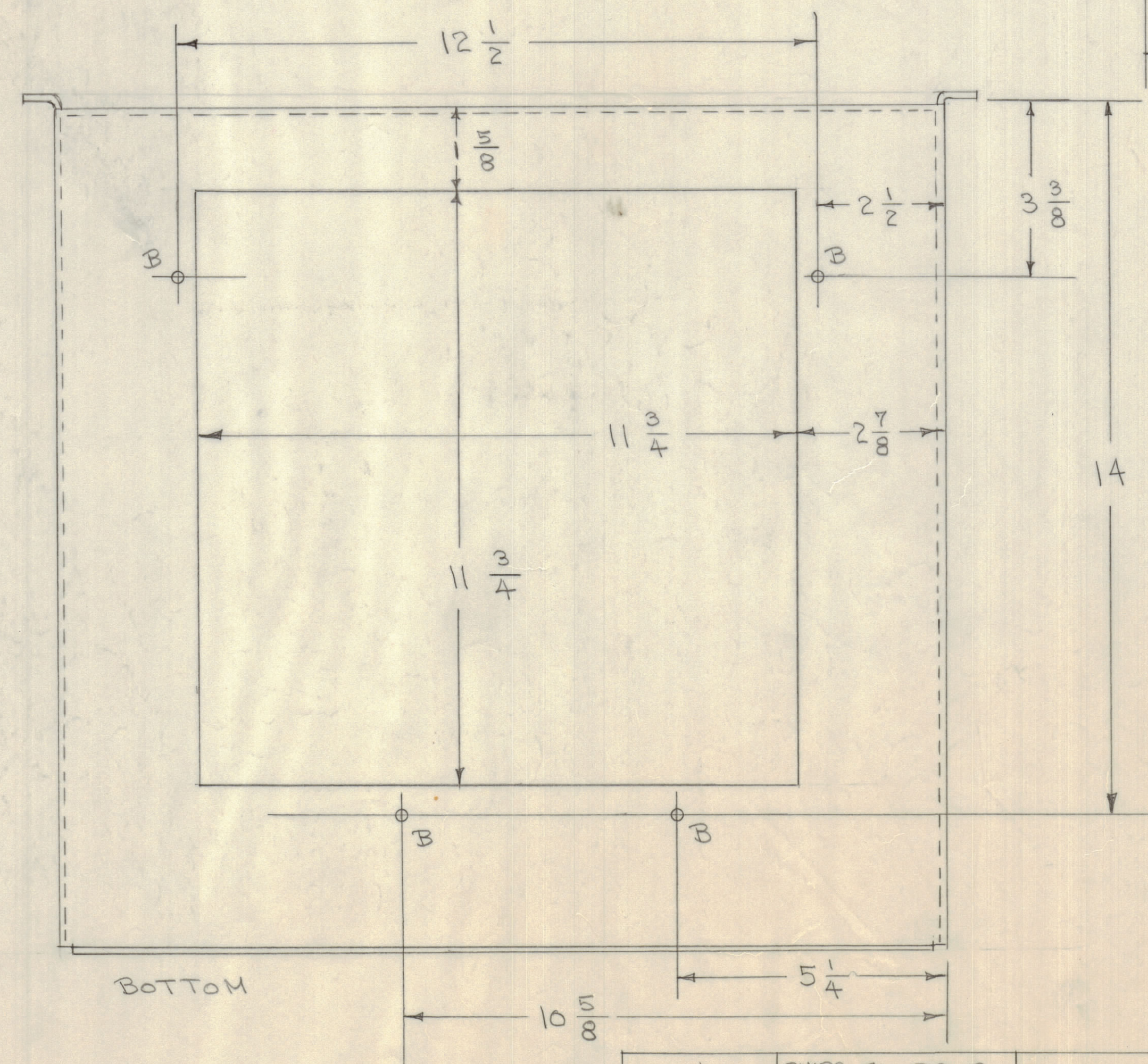
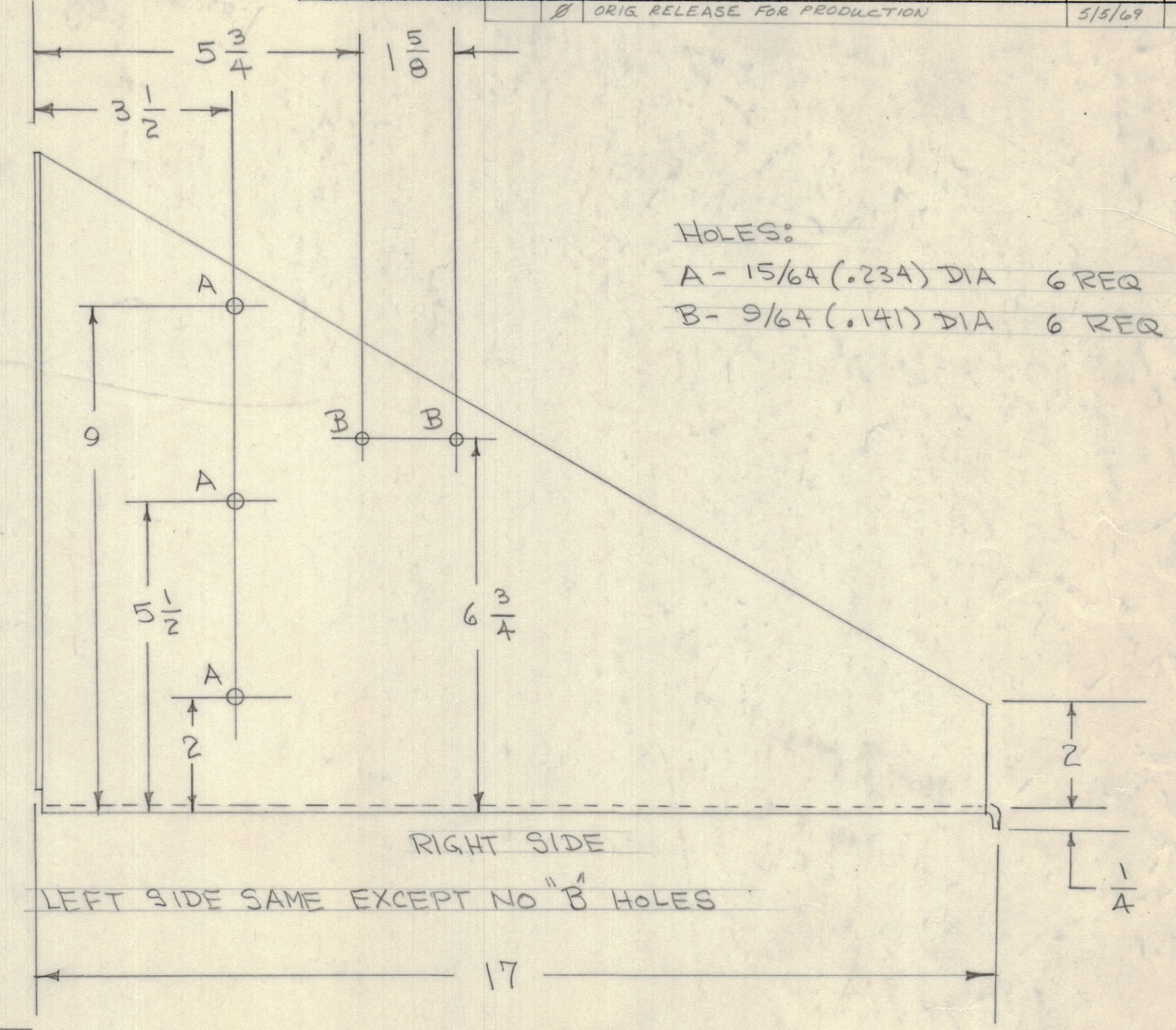
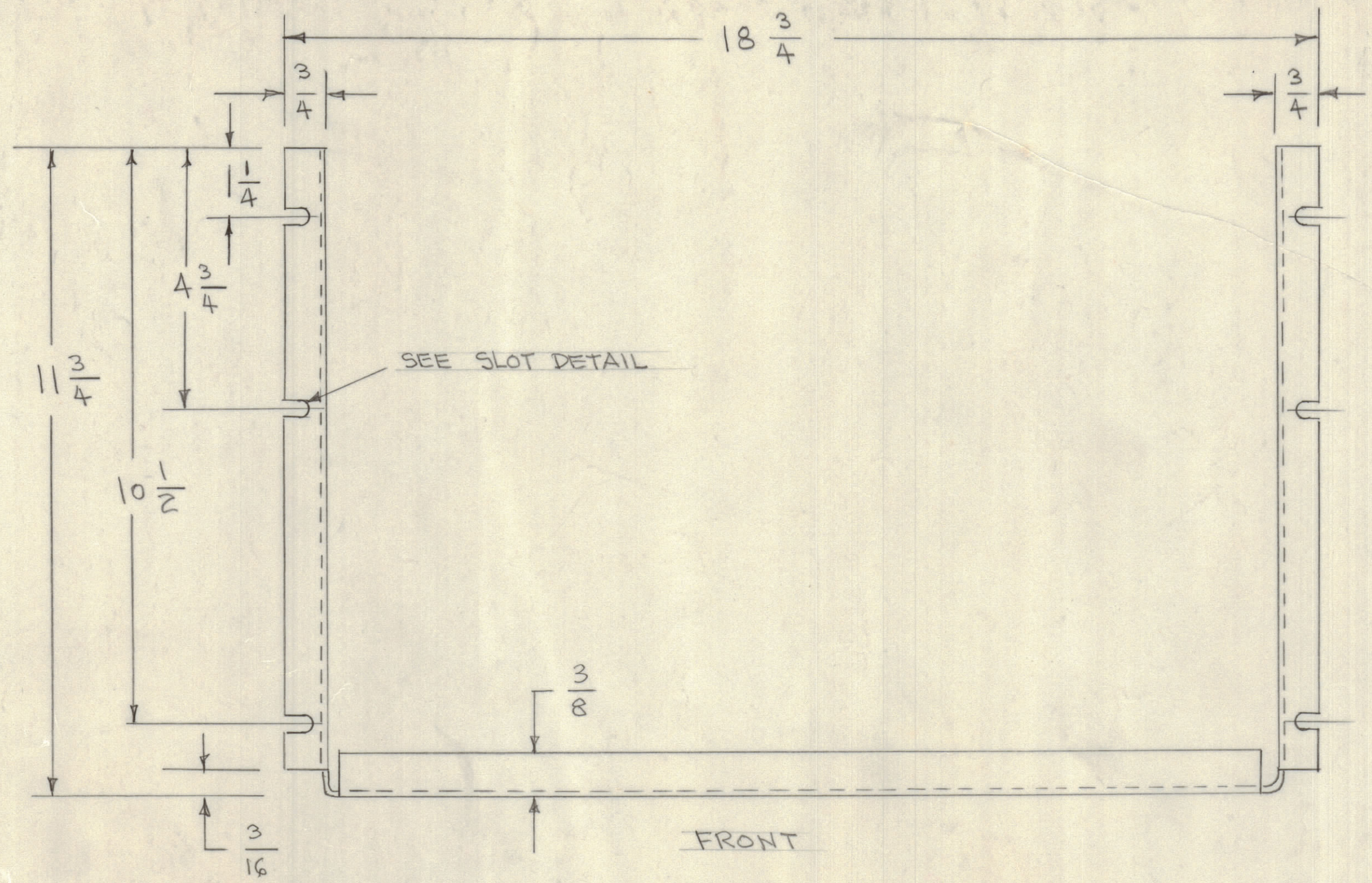
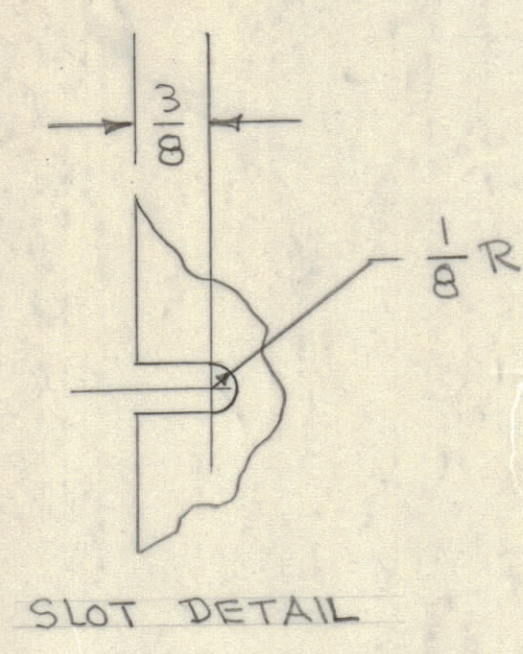


REVISIONS							
E.M.N.O.	DRAFT	CHKD	ZONE	LTR	DESCRIPTION	DATE	APPROVED
					ORIG. RELEASE FOR PRODUCTION	5/5/69	

HOLES:  
 A - 15/64 (.234) DIA 6 REQ  
 B - 9/64 (.141) DIA 6 REQ



FOR PURCHASED UNMODIFIED CHASSIS - SEE P/O No. A7656 TO BALL-MIRATEL

1	SHIPS TV RCVR	
QTY / UNIT	MODEL USED ON	ASS'Y NO.
APPLICATION		
CODE		
NOTICE TO PERSONS RECEIVING THIS DRAWING		
THE TECHNICAL MATERIEL CORPORATION claims proprietary right in the material disclosed hereon. This drawing is issued in confidence for engineering information only and may not be reproduced or used to manufacture anything shown hereon without permission from THE TECHNICAL MATERIEL CORPORATION to the user. This drawing is loaned for mutual assistance and is subject to recall at any time.		

UNLESS OTHERWISE SPECIFIED DIMENSIONS ARE IN INCHES AND INCLUDE CHEMICALLY APPLIED OR PLATED FINISHES

TOLERANCES ON  
 DECIMALS      FRACTIONS  
 .X = .05        = 1/64  
 .XX = .01       = 1/32  
 .XXX = .005    = 0° - 30'

MATERIAL 0.081 ALUM  
5052-H32

FINISH S404 YELLOW IRIDITE

QTY. REQ.	ITEM	PART NO.	DESCRIPTION	SYMBOL
LIST OF MATERIAL				
THE TECHNICAL MATERIEL CORP. MAMARONECK, NEW YORK				
CHASSIS SHIPS TV RECEIVER				
SIZE	CODE	IDENT NO.	DWG NO.	ISSUE
D	82679	MS8472		
SCALE 7/8				SHEET 1 OF 1