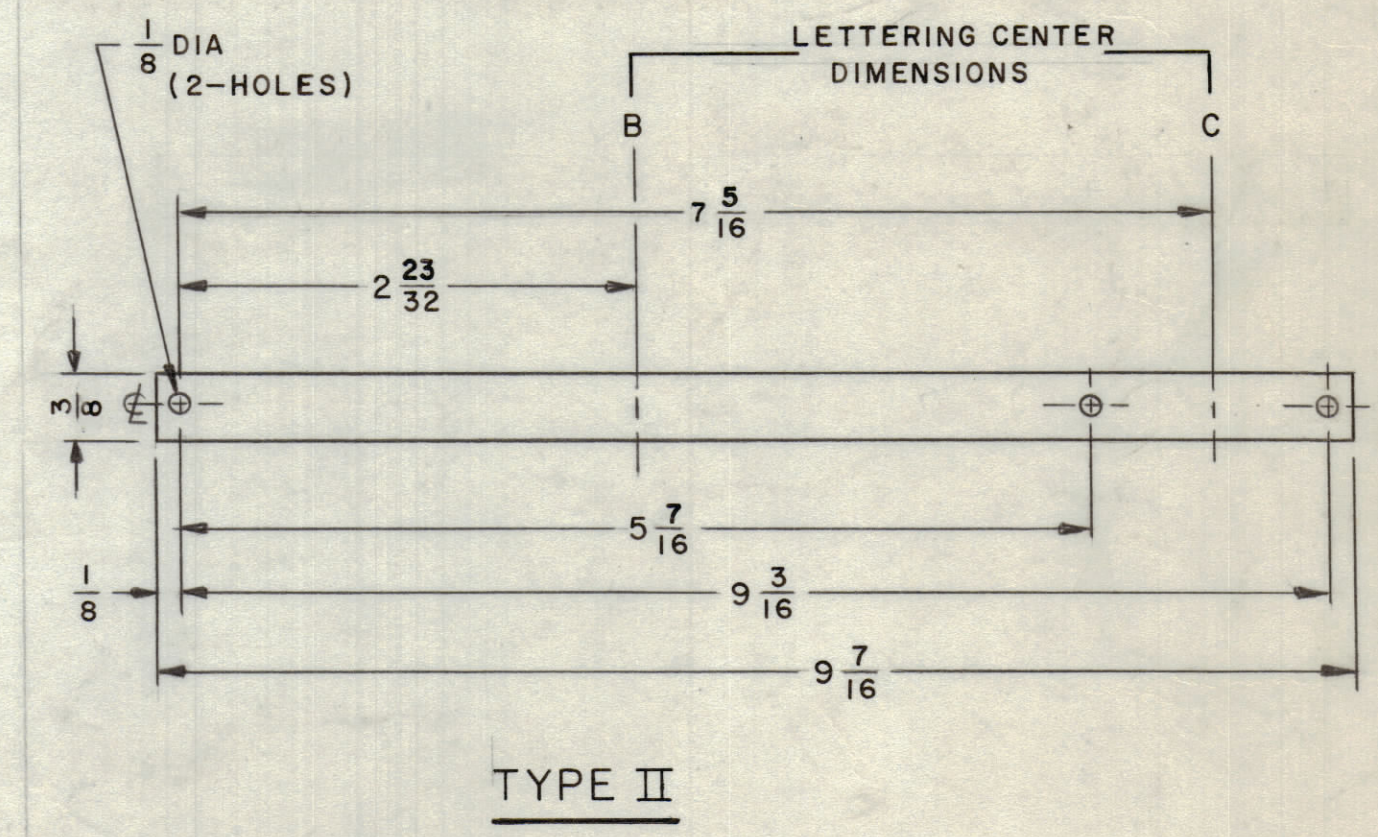
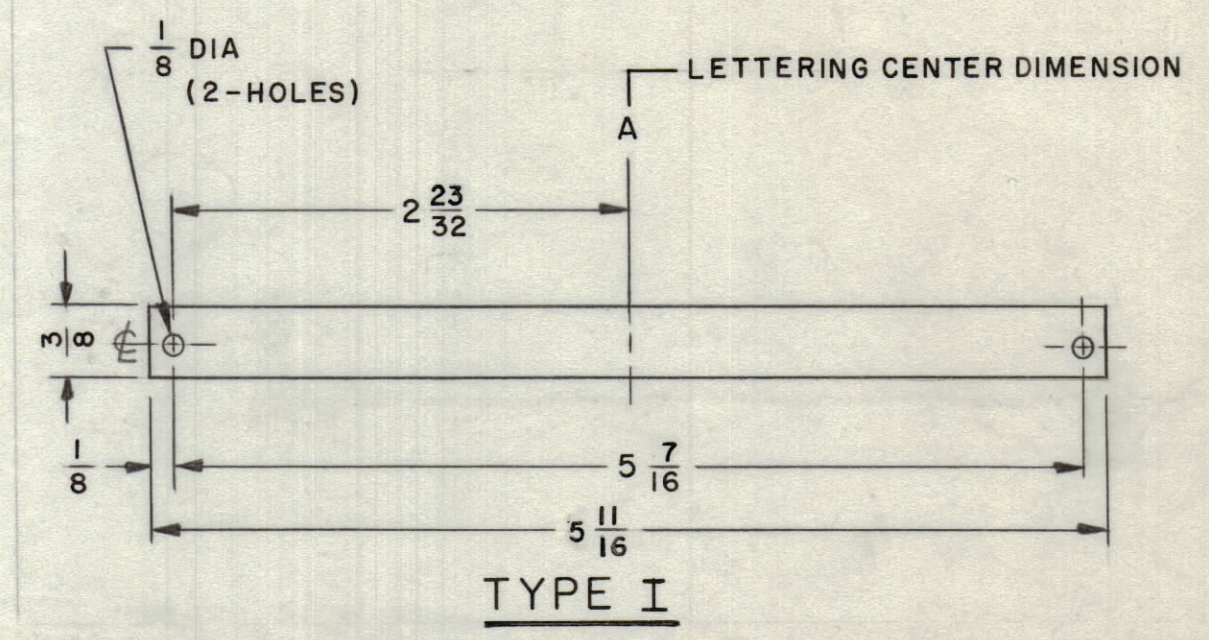


LETTERING NOMENCLATURE & CENTERS

TMC PART NO.	TYPE I		TYPE II	
	A	B	C	
	NP796-1	KILOCYCLES / RF GAIN		AFC / DET
NP796-2	IF BANDWIDTH			

REVISIONS							
ZONE	SYM	DESCRIPTION	DATE	E.M.N. NO.	DRAFT	CHKD	APPD
	Ø	ORIGINAL RELEASE FOR PRODUCTION	5/17/66	Ø	CV		JLB
2DEF	A	TYPE I DIM. WAS 2 27/32, 5 11/16, & 6 TYPE II DIM. WAS 8 7/16, 2 27/32, & 5 1/16	7-21-66	16590	RME	JCB	JEE



-UNLESS OTHERWISE SPECIFIED-

- FINISH NOTES:**
- S404 - IRIDITE 14-2 AL-COAT.
 - S114 - ZINC CHROMATE PRIMER) FRONT AND
 - S115 - SMOOTH GRAY ENAMEL) EDGES ONLY

- ENGRAVING NOTES:**
- ALL LETTERING GROUPS TO BE CENTERED ON RESPECTIVE CENTER DIMENSION & CENTER LINE OF MTG HOLES.
 - ENGRAVING TO BE 3/16 HIGH GOTHIC, .010 DEEP X 025 WIDE.
 - ALL LETTERING TO BE WHITE FILLED.
 - ALL ENGRAVING PER TMC SPEC S566

NOTES

RTPH-1		ASS'Y. NO.
QTY./UNIT	MODEL USED ON	
SCALE	CODE	
NONE		

THE CONTENTS OF THIS DRAWING ARE THE EXCLUSIVE PROPERTY OF THE TECHNICAL MATERIEL CORP. ITS UNAUTHORIZED USE OR REPRODUCTION IN WHOLE OR IN PART IS STRICTLY FORBIDDEN.

REQ'D.	ITEM	PART NUMBER	DESCRIPTION	SYMBOL
F. E. EATON LIST OF MATERIAL				
MATERIAL		THE TECHNICAL MATERIEL CORP. MAMARONECK, NEW YORK		
.031THK ALUMINUM 5052-H32		TITLE NAMEPLATE - FUNCTION		
FINISH		SEE NOTES		
UNLESS OTHERWISE SPECIFIED DIMENSIONS ARE IN INCHES AND INCLUDE CHEMICALLY APPLIED OR PLATED FINISHES		DRAWN J. LESHINSKI	DATE 11/30/65	FINAL APPROVAL
DECIMALS .XX ± .05 FRACTIONS ± 1/64		CHECKED JLB	DATE 11/11/66	DATE 5/14/66
.XXX ± .005 TOLERANCES ANGLES ± 0° 30'		ELECT. DES.	DATE	REV. LTR.
		MECH. DES. JCB	DATE 5/13/66	
			SHEET	

NP796 A