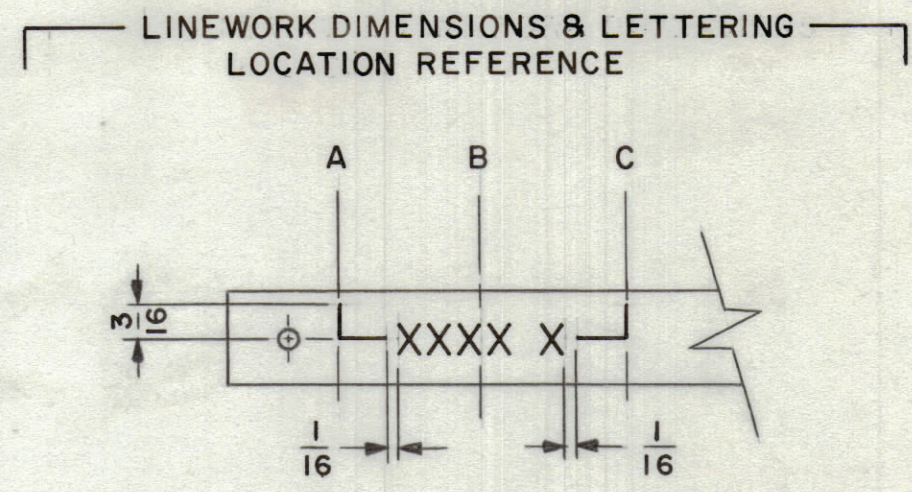
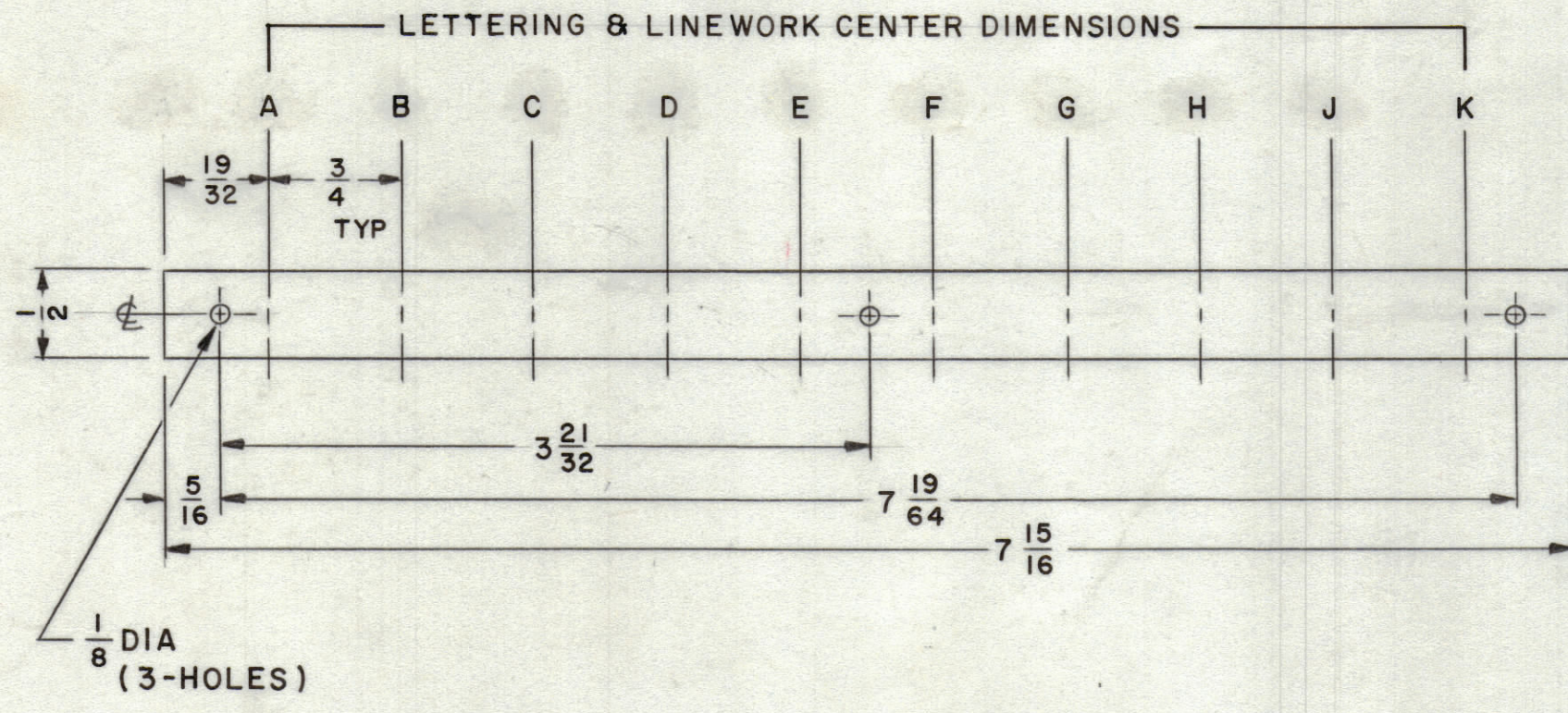


TMC PART NO.	LETTERING NOMENCLATURE & CENTERS										LINEWORK CENTERS			
	A	B	C	D	E	F	G	H	J	K	FROM	TO		
NP799-1		CHAN A								CHAN B			A	C
													H	K

ZONE		SYM	DESCRIPTION	DATE	E.M.N. NO.	DRAFT	CHKD	APPD
		Ø	ORIGINAL RELEASE FOR PRODUCTION	7/18/66	Ø			JLB



- UNLESS OTHERWISE SPECIFIED -

- FINISH NOTES:
- S404 - IRIDITE 14-2 AL-COAT.
 - S114 - ZINC CHROMATE PRIMER } FRONT AND
 - S115 - SMOOTH GRAY ENAMEL } EDGES ONLY

- ENGRAVING NOTES:
- ALL LETTERING GROUPS TO BE CENTERED ON RESPECTIVE CENTER DIMENSION.
 - ENGRAVING TO BE 3/16 HIGH GOTHIC .010 DEEP X .025 WIDE.
 - LINEWORK TO BE .010 DEEP X .015 WIDE.
 - ALL LETTERING & LINEWORK TO BE WHITE FILLED.
 - ALL ENGRAVING AS PER TMC SPEC S566.

RTIH-1		
Q'TY./UNIT	MODEL USED ON	ASS'Y. NO.
SCALE	CODE	

THE CONTENTS OF THIS DRAWING ARE THE EXCLUSIVE PROPERTY OF THE TECHNICAL MATERIEL CORP. ITS UNAUTHORIZED USE OR REPRODUCTION IN WHOLE OR IN PART IS STRICTLY FORBIDDEN.

REQ'D.	ITEM	PART NUMBER	DESCRIPTION	SYMBOL
EATON LIST OF MATERIAL				
MATERIAL		THE TECHNICAL MATERIEL CORP.		
.031 THK ALUMINUM		MAMARONECK, NEW YORK		
5052-H32		TITLE		
FINISH		NAMEPLATE - FUNCTION		
SEE NOTES		DRAWN		
		J. LESHINSKI		
		DATE		
		12/27/65		
		CHECKED		
		DATE		
		4-11-66		
		ELECT. DES.		
		DATE		
		7/18/66		
		MECH. DES.		
		DATE		
		7/18/66		
		SHEET		
		REV. LTR.		

NOTES

NP799