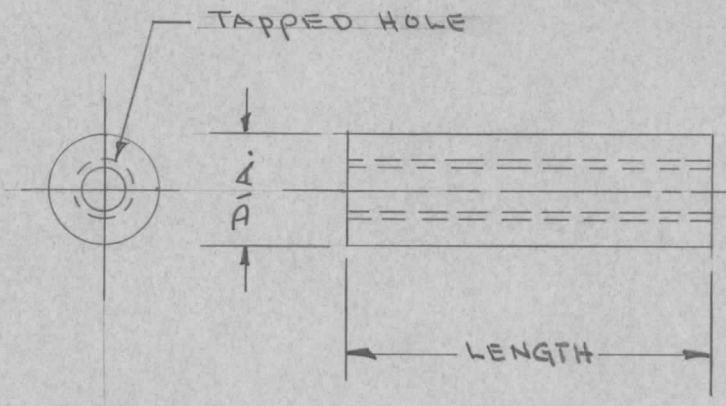


LENGTH	CENTRALAB CAT. NOS.				
	TAPPED FOR 6-32 THD.			10-32 THD.	¼-20 THD.
	¼ DIA.	⅜ DIA.	½ DIA.	¾ DIA.	1" DIA.
¼	X-63				
⅜	X-64	X-65			
½	X-8	X-48	X-12		
5/8		X-50			
¾	X-9	X-52	X-13	X-20	
1	X-10	X-54	X-14	X-21	X-28
1 ¼	X-11	X-56	X-15	X-22	X-29
1 ½		X-58	X-16	X-23	X-30
2		X-60	X-17	X-24	X-31
2 ¼		X-62			
2 ½			X-18	X-25	X-32
3			X-19	X-26	X-33
4				X-27	X-34
5					X-35

REQ. PER UNIT	USED ON			NS-117	⊘
	MODEL	ASS'Y. NO.	DATE		
			10/14/55		



NS-117-X62

TMC NO

CATALOG. NO (SEE CHART ABOVE)

REF: CENTRALAB

REQ. ITEM	PART NO.	DESCRIPTION	SYMBOL
		THE TECHNICAL MATERIEL CORP. MAMARONECK, NEW YORK	
	STOCK SIZE	INSULATOR, STANDOFF	
	MATERIAL		
⊘	ORIGINAL RELEASE	9/26/69	W
ISSUE ITEM	CHANGED FROM	DATE	CH. NO. DRAFTS CHECKER ENG. APP.
	TOLERANCES	SCALE:	
	DEC. DIM. ±	MAXIMUM ALLOWABLE TOLERANCES HAVE BEEN DETERMINED AND ANY DEVIATIONS WILL BE CAUSE FOR REJECTION.	
	FRAC. DIM. ±	REMOVE ALL BURRS AND SHARP EDGES	
	ANGULAR DIM. ±		
	GRADE L5	GRADE L5	GRADE L5
	TYPE & TEMPER	HEAT TREAT. SPEC.	DRAWN CHECKED FINAL APPROVAL
	FINISH & SPEC. NO.	ELEC. DES. APP. MECH. DES. APP.	NS-117 ⊘