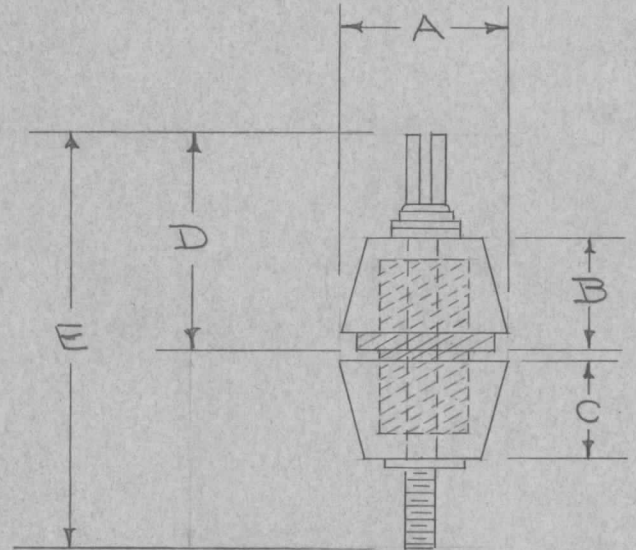


STANDARD DRAWING

REQ. PER UNIT	USED ON		
	MODEL	ASS'Y. NO.	DATE

TMC No.	CAT. NO.	A	B	C	D	E	STUD THD. BTM.	RMS VOLTS	AMPS	MTG. HOLE	PANEL THK-NESS	STYLE NO.	GLAND TYPE
NS-118-1	500 A	1/2	13/32	1/4	27/32	13/8	G-32	7000	20	17/64	.060	5	NEOPRENE
" -2	500 C	1/2	13/32	9/32	27/32	13/8	G-32	7000	20	17/64	.060	5	NEOPRENE
" -3	875 A	7/8	19/32	1/2	1	2 1/8	10-24	9000	45	1/2	.060	5	NEOPRENE
" -4	1125 A	1 1/8	7/8	3/4	1 1/4	2 1/16	10-24	12,000	45	3/4	.074	5	NEOPRENE
" -5	875 A W/O GLAND	7/8	19/32	1/2	1	2 1/8	10-24	12,000	45	1/2	.060		NONE
" -6	875 A MODIFIED	7/8	19/32	1/2	1	1 7/8	10-24	9000	45	1/2	.060	5	NEOPRENE



BUSHING - BRASS HOT TINNED
 WASHER - NEOPRENE
 INSULATORS - STEATITE
 L3 OR BETTER
 GLAND - SEE CHART

REF: HELDOR BUSHING & TERM. CO., INC.

D	1	NS-118-6 ADDED	2-11-63	8221	<i>[Signature]</i>	<i>[Signature]</i>	<i>[Signature]</i>	REQ. ITEM	PART NO.	DESCRIPTION	SYMBOL	
C		ADDED -5 CAT NO.	6-20-62	6783	R.V.	<i>[Signature]</i>	<i>[Signature]</i>	THE TECHNICAL MATERIEL CORP. MAMARONECK, NEW YORK				
B		-5 GLAND TYPE WAS TEFLON PX-287	8/26/59	1234	<i>[Signature]</i>	<i>[Signature]</i>	<i>[Signature]</i>	BUSHING FEED THRU				
A	1	-5 (TEFLON) ADDED	5/4/59		<i>[Signature]</i>	<i>[Signature]</i>	<i>[Signature]</i>	CDD 1/5/56 <i>[Signature]</i> <i>[Signature]</i>				
ISSUE ITEM CHANGED FROM			DATE	CH. NO.	DRAFTS	CHECKER	ENG. APP.	MATERIAL				
TOLERANCES			SCALE:				TYPE & TEMPER		HEAT TREAT. SPEC.	DRAWN	CHECKED	FINAL APPROVAL
DEC. DIM. ± FRAC. DIM. ± ANGULAR DIM. ±			MAXIMUM ALLOWABLE TOLERANCES HAVE BEEN DETERMINED AND ANY DEVIATIONS WILL BE CAUSE FOR REJECTION. REMOVE ALL BURRS AND SHARP EDGES				FINISH & SPEC. NO.		ELEC. DES. APP.	MECH. DES. APP.	NS-118	D