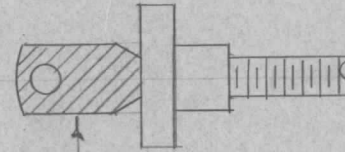
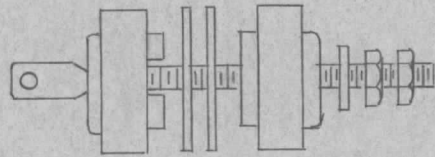
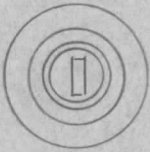
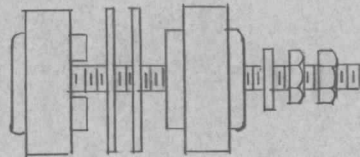


REQ. PER UNIT	USED ON			NS-122
	MODEL	ASS'Y. NO.	DATE	
1	RTF		2-6-56	



REMOVE SCREW FROM FEED THRU (TOP SKETCH). CUT OFF SHADED AREA. SMOOTH END OF BUTTON. SILVER PLATE SCREW (.0003). REPLACE AS IN BOTTOM SKETCH.



NOTE  
USED ONLY ON RTF SERIAL NOS 100-114 INCLUSIVE

								REQ. ITEM	PART NO.	DESCRIPTION	SYMBOL	
								NS-121		THE TECHNICAL MATERIEL CORP. MAMARONECK, NEW YORK		
								STOCK SIZE			INSULATOR, MODIFIED	
								MATERIAL			POW/AMP.	
ISSUE	ITEM	CHANGED FROM	DATE	CH. NO.	DRAFTS	CHECKER	ENG. APP.					
TOLERANCES			SCALE:									
DEC. DIM. $\pm$			MAXIMUM ALLOWABLE TOLERANCES HAVE BEEN DETERMINED AND ANY DEVIATIONS WILL BE CAUSE FOR REJECTION. REMOVE ALL BURRS AND SHARP EDGES					TYPE & TEMPER	HEAT TREAT. SPEC.	DRAWN	CHECKED	FINAL APPROVAL
FRAC. DIM. $\pm$								SEE ABOVE				
ANGULAR DIM. $\pm$								FINISH & SPEC. NO.	ELEC. DES. APP.	MECH. DES. APP.	NS-122	