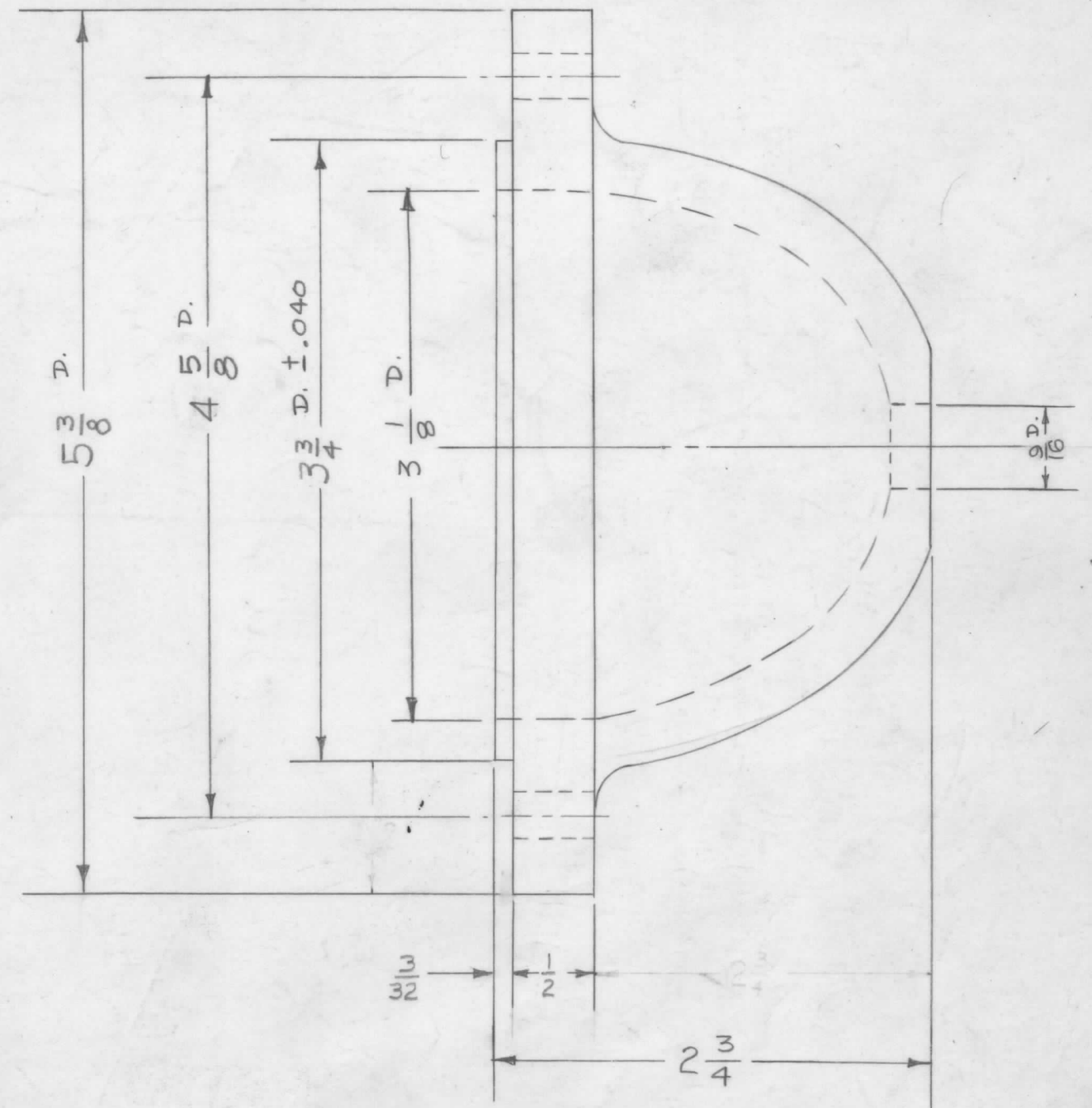
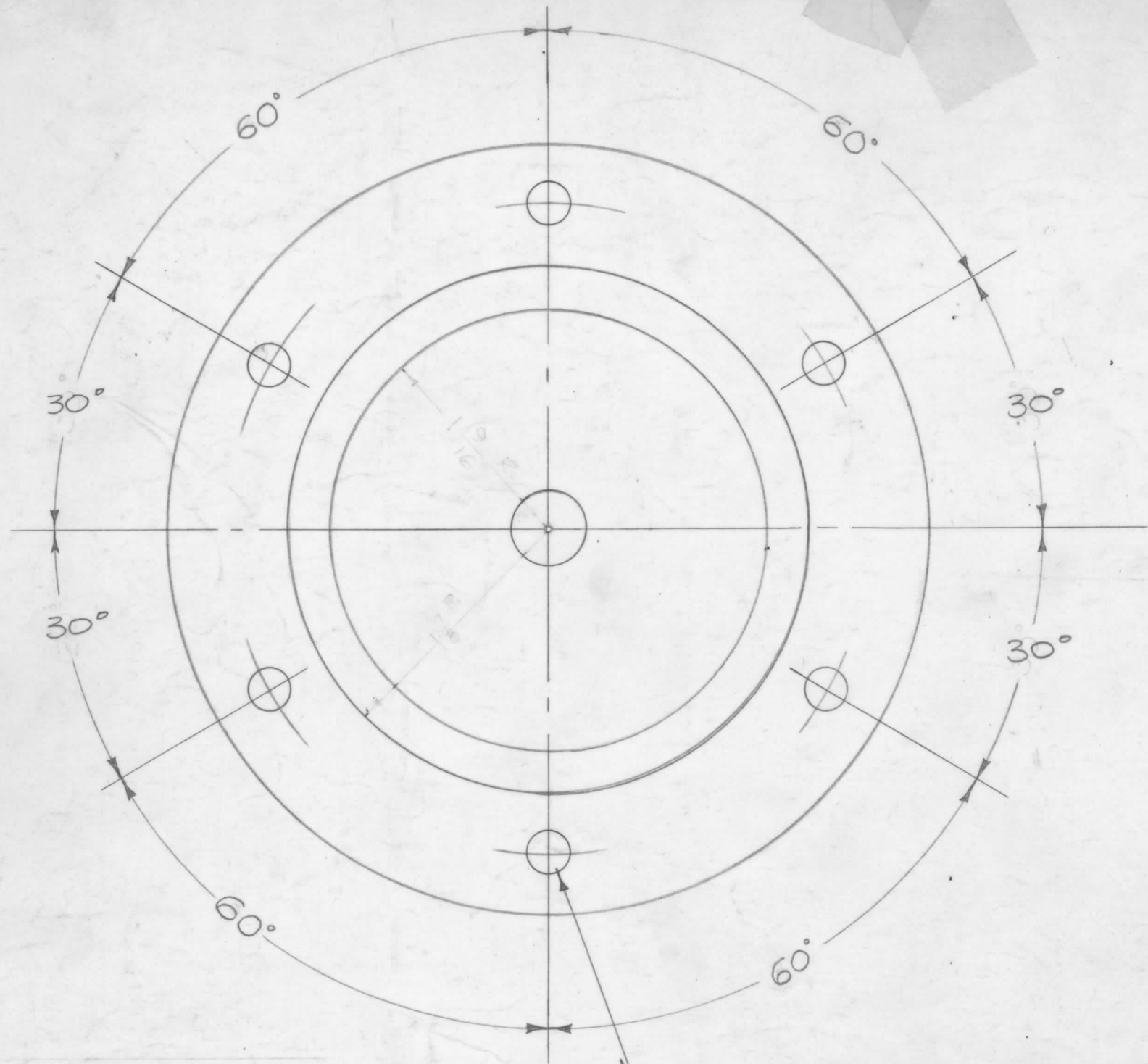


TOLERANCE:
 GLAZED SURFACES ± 2%
 UNGLAZED SURFACES ± 1%



NOTE: 6 - $\frac{9}{32}$ HOLES EQUALLY SPACED.

REF: ISOLANTITE CO. NO. 306

ISSUE	ITEM	CHANGED FROM	DATE	CH. NO.	DRAFTS	CHECKER	ENG. APP.
A	2	TOLERANCE NOTES ADDED	11-16-62	7621	ch	XDe	[Signature]
	1	3-3/4 ± .040 WAS 3-3/4					

TOLERANCES		SCALE: 1" = 1"
DEC. DIM. ±	MAXIMUM ALLOWABLE TOLERANCES HAVE BEEN DETERMINED AND ANY DEVIATIONS WILL BE CAUSE FOR REJECTION.	
FRAC. DIM. ±	REMOVE ALL BURRS AND SHARP EDGES	
ANGULAR DIM. ±		

4	TER-3500	A-1431(8)	3-21-57
REQ. PER UNIT	MODEL	PROJECT NO.	ASS'Y. NO.
USED ON			

REQ. ITEM	PART NO.	DESCRIPTION	SYMBOL
STOCK SIZE		THE TECHNICAL MATERIEL CORP. MAMARONECK, NEW YORK	
MATERIAL		INSULATOR, FLANGED BOWL TYPE (TER-5000)	
TYPE & TEMPER		SC 3-2057	[Signature]
HEAT TREAT. SPEC.		DRAWN	CHECKED
FINISH & SPEC. NO.		FINAL APPROVAL	
GLAZED, EXCEPT BASE & INSIDE		NS-123 A	
ELEC. DES. APP.		MECH. DES. APP.	