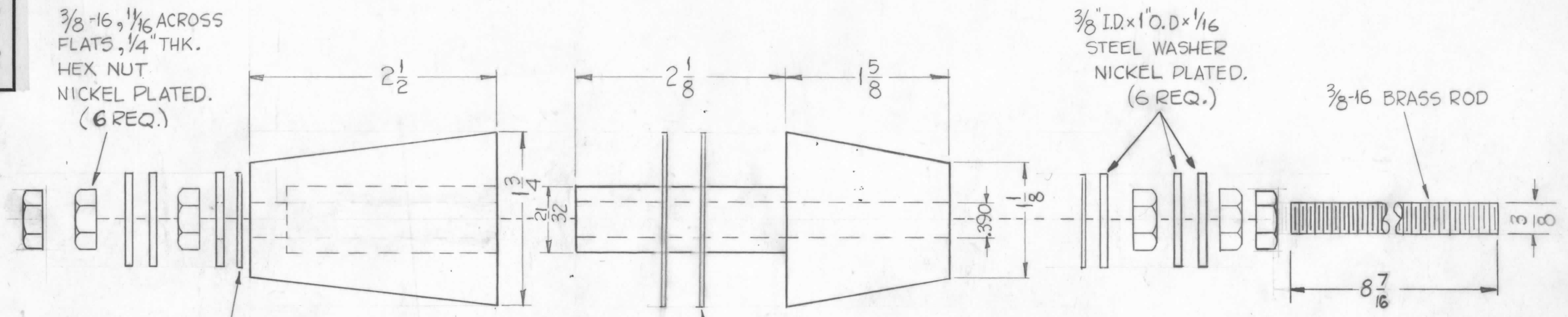


NS-130 B



3/8-16, 1/16 ACROSS FLATS, 1/4" THK. HEX NUT NICKEL PLATED. (6 REQ.)

3/8" I.D. x 1" O.D. x 1/16 STEEL WASHER NICKEL PLATED. (6 REQ.)

3/8-16 BRASS ROD

LEAD WASHER 1/2 I.D. x 1 O.D. x 1/32 (2 Req'd)

SILICONE WASHERS 3/4 I.D. x 1 13/16 O.D. x 3/32 TH'K. (2 Req'd)

NOTICE TO AIR C'S RECEIVING: THIS DRAWING IS THE PROPERTY OF THE TECHNICAL MATERIEL CORPORATION. IT IS ISSUED IN CONFIDENCE FOR AIR FORCE INFORMATION ONLY AND MAY NOT BE REPRODUCED OR USED TO MANUFACTURE ANYTHING SHOWN HEREON WITHOUT PERMISSION FROM THE TECHNICAL MATERIEL CORPORATION TO THE EFFECT. THIS DRAWING IS LOANED FOR MUTUAL ASSISTANCE AND IS SUBJECT TO RECALL AT ANY TIME.

Property of:  
THE TECHNICAL MATERIEL CORPORATION  
MAMARONECK, NEW YORK

Ref. ~ Isolantite Manufacturing Corp. (988 W/Special rod & Silicone washers)

SYM	DESCRIPTION	DATE	CH. NO.	DRAFTS	CHECKER	ENG. APP.
B	Silicone Washers were lead washers 7/8 I.D. x 1 3/4 O.D. x 1/32 TH'K (2 Req'd)	2-7-61	A074	JPM	QPS	SPV
A	(2) HEX NUTS ADDED - ROD WAS 6 7/8" L	1/30/61	4028	P		F.O.S.

UNLESS OTHERWISE SPECIFIED:  
DIMENSIONS ARE IN INCHES  
TOLERANCES ON FRACTIONS ± 1/64 DECIMALS ± .005 ANGLES ± 1/2°  
SCALE: MAXIMUM ALLOWABLE TOLERANCES HAVE BEEN DETERMINED AND ANY DEVIATIONS WILL BE CAUSE FOR REJECTION. REMOVE ALL BURRS AND SHARP EDGES

REQ. PER UNIT	MODEL	SECTION	ASS'Y. NO.	DATE
1	ATA-2,3,4,5			1-13-61
USED ON				

REQ.	ITEM	PART NO.	DESCRIPTION	SYMBOL
THE TECHNICAL MATERIEL CORP. MAMARONECK, NEW YORK				
INSULATOR				
MATERIAL				
TYPE & TEMPER HEAT TREAT. SPEC. DRAWN CHECKER FINAL APPROVAL				
FINISH & SPEC. NO. ELEC. DES. APP. MECH. DES. APP.				
				NS-130 B