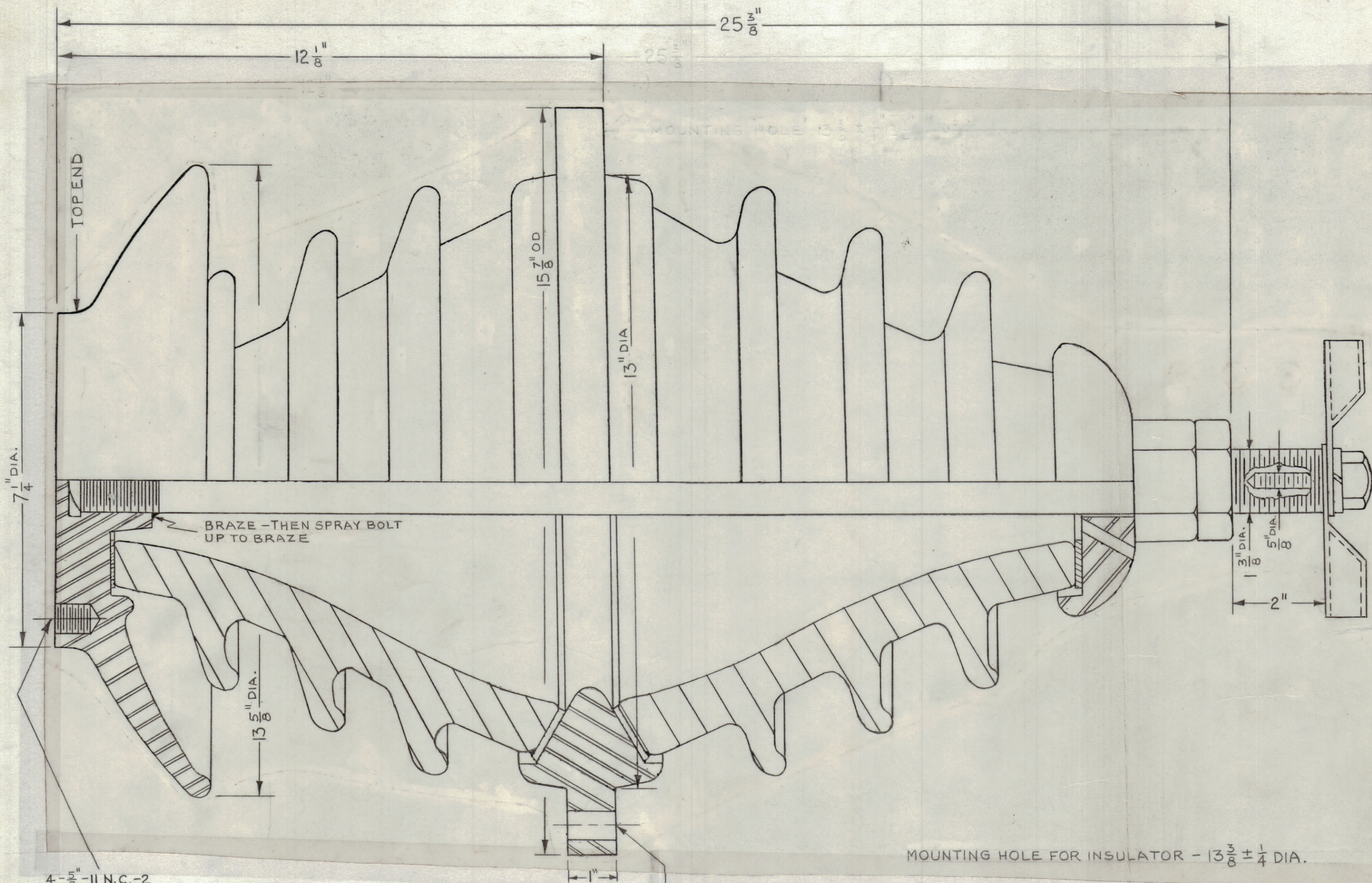


REVISIONS							
ZONE	SYM	DESCRIPTION	DATE	E.M.N. NO.	DRAFT	CHKD	APPD
	X	EXPERIMENTAL RELEASE	3.26.64		WJB		
	O	ORIGINAL RELEASE FOR PRODUCTION	4.1.64		WJB		



4 - $\frac{5}{16}$ " - 11 N.C. - 2
TAPPED HOLES
 $\frac{3}{4}$ " DEEP.
EQUALLY SPACED
ON 6" B.C.

MATERIAL:
INSULATOR: PORCELAIN
CAP SCREW & NUTS: NAVAL BRASS
LOCK WASHER: PHOSPHOR BRONZE
FLANGE: BRONZE
STUD ASSEMBLY: STEEL-GALVE
TERMINAL: SOFT COPPER
TOP GASKET: SOFT COPPER
FLANGE GASKET: NEOPRENE

12 HOLES, $\frac{23}{32}$ " DRILL
EQUALLY SPACED
ON $14 \frac{5}{8}$ " B.C.

MOUNTING HOLE FOR INSULATOR - $13 \frac{3}{8} \pm \frac{1}{4}$ DIA.

NOTES

1	AW104	
Q'TY./UNIT	MODEL USED ON	ASS'Y. NO.
NONE	C	5401-278(30866)

THE CONTENTS OF THIS DRAWING ARE THE EXCLUSIVE PROPERTY OF THE TECHNICAL MATERIEL CORP. ITS UNAUTHORIZED USE OR REPRODUCTION IN WHOLE OR IN PART IS STRICTLY FORBIDDEN.

REQ'D.	ITEM	PART NUMBER	DESCRIPTION	SYMBOL
R. HAY LIST OF MATERIAL				
MATERIAL		THE TECHNICAL MATERIEL CORP. MAMARONECK, NEW YORK		
FINISH		TITLE INSULATOR		
DRAWN		DATE	FINAL APPROVAL	DATE
CHECKED		3.4.64	RAL	4-1-64
ELECT. DES.		DATE	NS-136	
MECH. DES.		DATE	O	
		4-1-64	SHEET	
		4/1/64	REV. LTR.	

NS-136
O