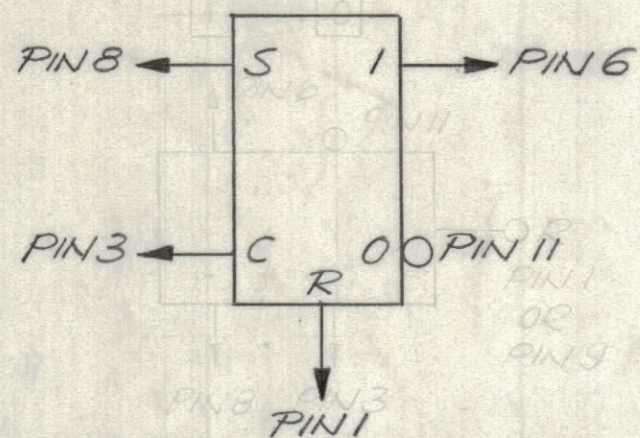
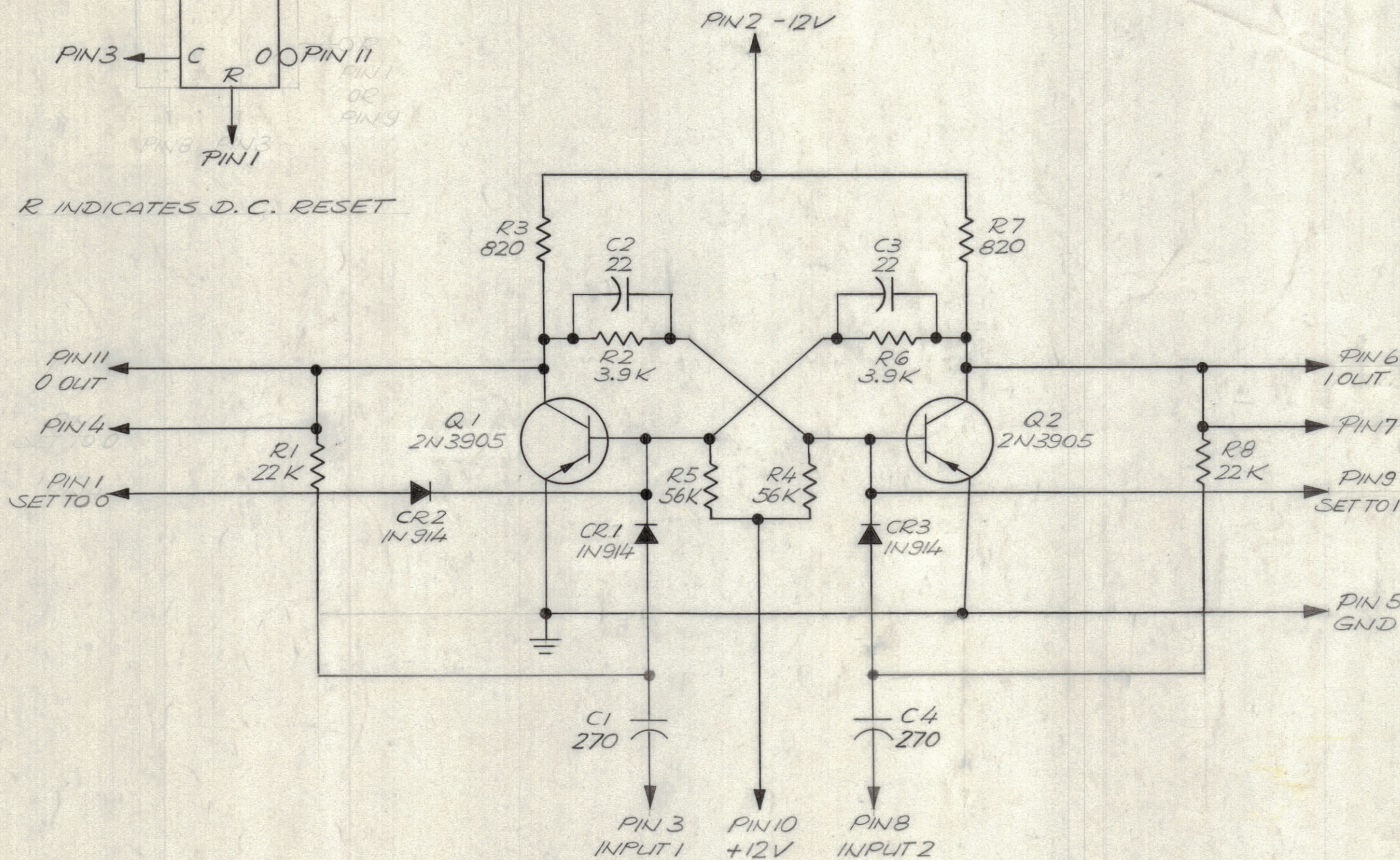


NW151

### LOGIC DIAGRAM



### SCHEMATIC DIAGRAM



ALL RESISTORS ARE IN OHMS 1/4W ±5%  
 ALL CAPACITORS ARE IN pF UNLESS OTHERWISE INDICATED

### ELECTRICAL SPECIFICATIONS:

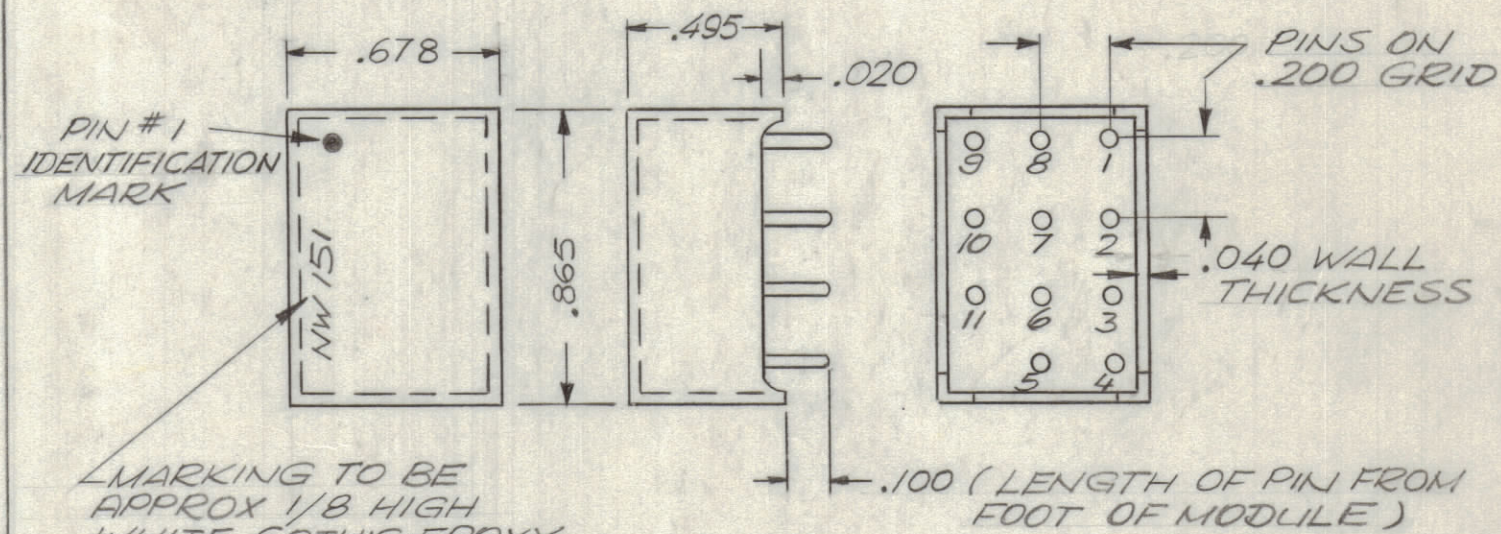
12 VOLT LOGIC  
 PIN # 5 GND  
 PIN # 2 -12V  
 PIN # 10 +12 V  
 OPERATING TEMPERATURE 0°C TO +75°C

### SWITCHING CHARACTERISTICS:

INPUT MIN. VOLTAGE -5.0 VDC  
 OUTPUT MIN. VOLTAGE -10.0 VDC  
 INPUT  $T_r = 0.12 \mu\text{sec}$ .  
 OUTPUT  $T_r = 0.16 \mu\text{sec}$ .  $T_f = 0.12 \mu\text{sec}$ .

### MECHANICAL SPECIFICATIONS

POTTING COMPOUND: EPOTEC 509  
 CASE MATERIAL: DIALYL PHTHALATE  
 POLARIZING PIN: PIN # 12



MARK AS REQ.:  
 NW 151

NOTE:  
 PINS ARE EXTRUDED COMPONENT LEADS. (DO NOT USE TRANSISTOR LEADS FOR MTG. PINS)

QTY. REQ.	ITEM	PART NO.	DESCRIPTION	SYMBOL
-----------	------	----------	-------------	--------

### LIST OF MATERIAL

UNLESS OTHERWISE SPECIFIED DIMENSIONS ARE IN INCHES AND INCLUDE CHEMICALLY APPLIED OR PLATED FINISHES		FINAL APPROVAL <i>J. De Marco</i>	DATE 2/24/70	THE TECHNICAL MATERIEL CORP. MAMARONECK, NEW YORK	
TOLERANCES ON		MECH. DES. <i>R 2/27/70</i>	DATE 2-24-70		
DECIMALS .X ± .05 .XX ± .01 .XXX ± .005		ELECT. DES.	DATE	NETWORK, DIGITAL FLIP FLOP	
FRACTIONS ± 1/64 ANGLES ± 0° -30'		CHECKED <i>X Research</i>	DATE 9/26/69		
MATERIAL		DRAWN <i>G EVANGELIST</i>	DATE 3-27-69	SIZE C	CODE IDENT. NO. 82679
FINISH				DWG NO. NW 151	ISSUE Ø
SCALE				SHEET	OF

QTY / UNIT	MODEL USED ON	ASS'Y NO.
	DDRR 10M, K	
APPLICATION		
CODE		

NOTICE TO PERSONS RECEIVING THIS DRAWING  
 THE TECHNICAL MATERIEL CORPORATION claims proprietary right in the material disclosed hereon. This drawing is issued in confidence for engineering information only and may not be reproduced or used to manufacture anything shown hereon without permission from THE TECHNICAL MATERIEL CORPORATION to the user. This drawing is loaned for mutual assistance and is subject to recall at any time.