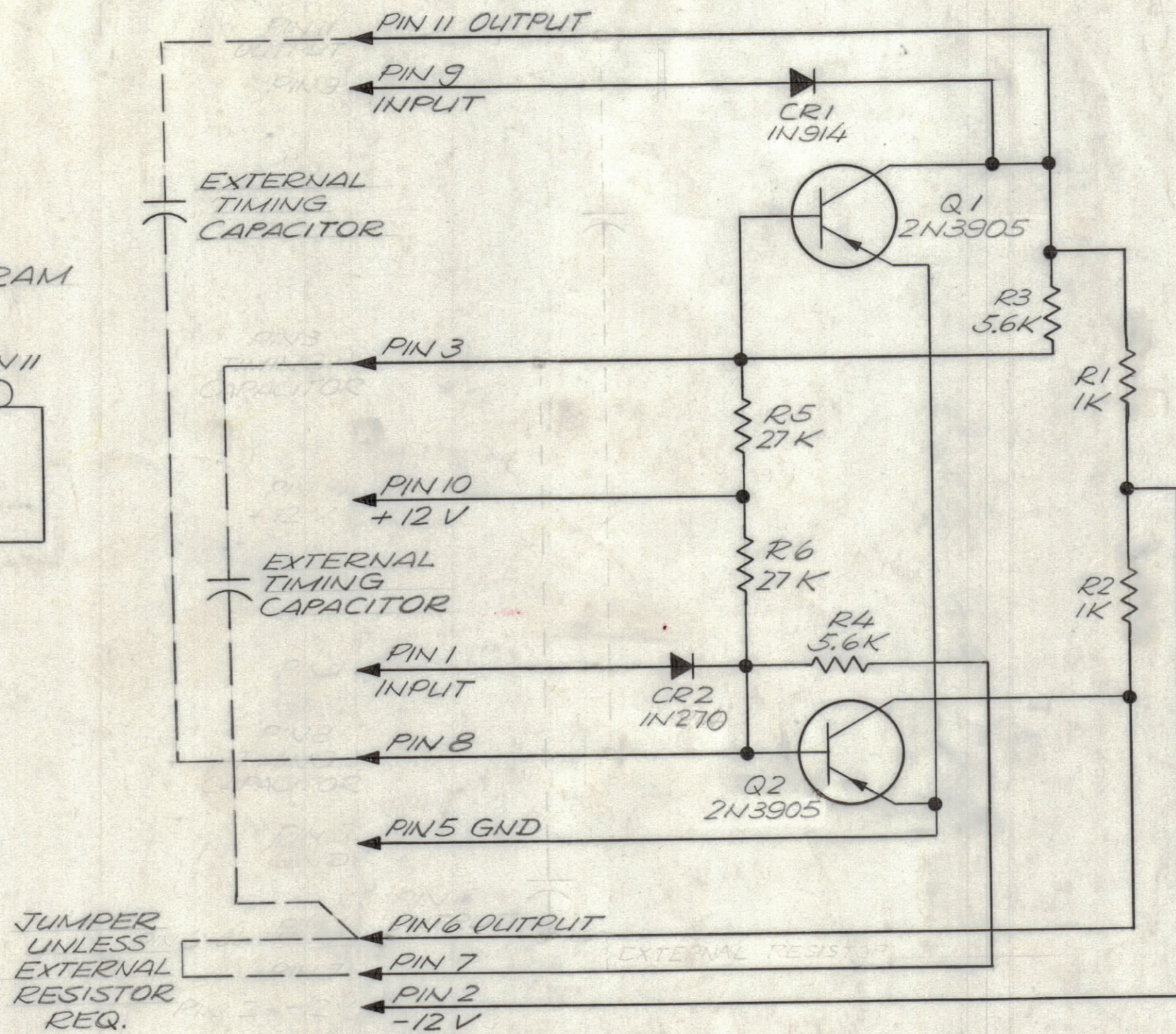
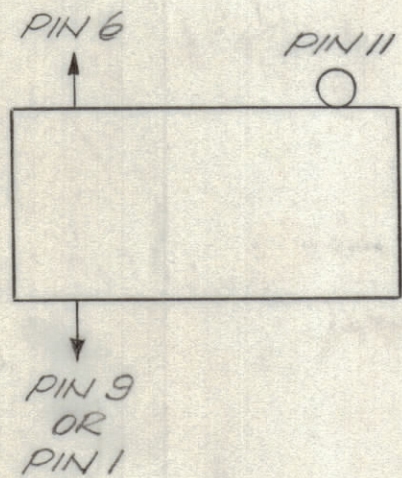


NW 152

SCHMATIC DIAGRAM



LOGIC DIAGRAM



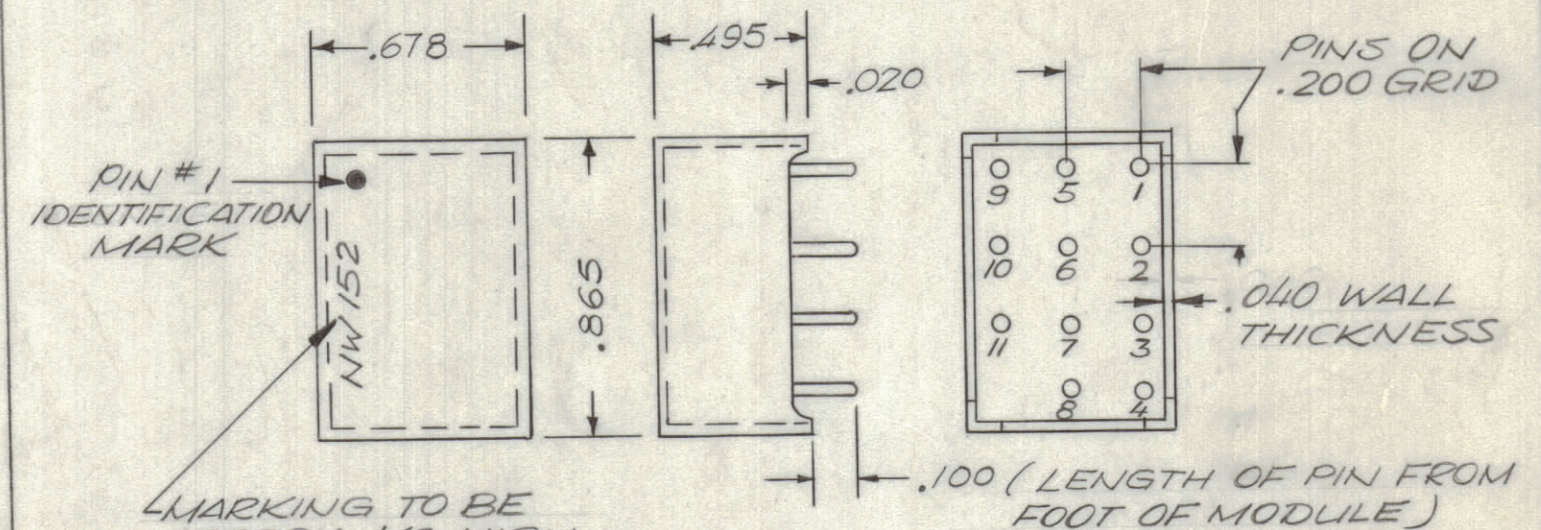
ALL RESISTORS ARE IN OHMS 1/4 W ± 5%

ELECTRICAL SPECIFICATIONS:

12 VOLT LOGIC
 PIN 5 - GND
 PIN 2 - 12 V
 PIN 10 + 12 V
 OPERATING TEMPERATURE 0°C TO +75°C
 SWITCHING CHARACTERISTICS:
 OUTPUT MIN. VOLTAGE - 8 V
 OUTPUT $T_f = 0.02 \mu\text{sec.}$

MECHANICAL SPECIFICATIONS:

POTTING COMPOUND: EPOTEC 509
 CASE MATERIAL: DIALLYL PHTHALATE
 POLARIZING PIN: PIN # 12



NOTE:
 PINS ARE EXTRUDED COMPONENT LEADS (DO NOT USE TRANSISTOR LEADS FOR MTG. PINS).

REVISIONS						
ZONE	LTR	DESCRIPTION	DATE	E.M.N.NO	DRAFT	CHKD APPD
	X	EXP. RELEASE	9/25/69		KH	
	X1	REV. & UPDATED	10/30/69		KH	
	X2	12 VOLT LOGIC TO ELEC. SPEC. ADD	11/16/69		KH	
	Ø	ORIGINAL RELEASE FOR PRODUCTION	3/1/70		Ø	

QTY. REQ.	ITEM	PART NO.	DESCRIPTION	SYMBOL
LIST OF MATERIAL				

UNLESS OTHERWISE SPECIFIED DIMENSIONS ARE IN INCHES AND INCLUDE CHEMICALLY APPLIED OR PLATED FINISHES		FINAL APPROVAL <i>J. Demarco</i> MECH. DES. <i>R. K38</i>	DATE 2/24/70
TOLERANCES ON		ELECT. DES.	DATE
DECIMALS	FRACTIONS	CHECKED <i>KP. [unclear]</i>	DATE 9/26/69
.X ± .05	± 1/64	DRAWN <i>G. EVANGELIST</i>	DATE 3/26/69
.XX ± .01	ANGLES		
.XXX ± .005	± 0° - 30'		

THE TECHNICAL MATERIEL CORP.
 MAMARONECK, NEW YORK

NETWORK, DIGITAL
 TIMING GENERATOR

QTY / UNIT	DDRR - 10M, K	ASS'Y NO.
APPLICATION		
	CODE	

SIZE	CODE IDENT. NO.	DWG NO.	ISSUE
C	82679	NW 152	Ø
SCALE		SHEET	OF

NOTICE TO PERSONS RECEIVING THIS DRAWING
 THE TECHNICAL MATERIEL CORPORATION claims proprietary right in the material disclosed hereon. This drawing is issued in confidence for engineering information only and may not be reproduced or used to manufacture anything shown hereon without permission from THE TECHNICAL MATERIEL CORPORATION to the user. This drawing is loaned for mutual assistance and is subject to recall at any time.