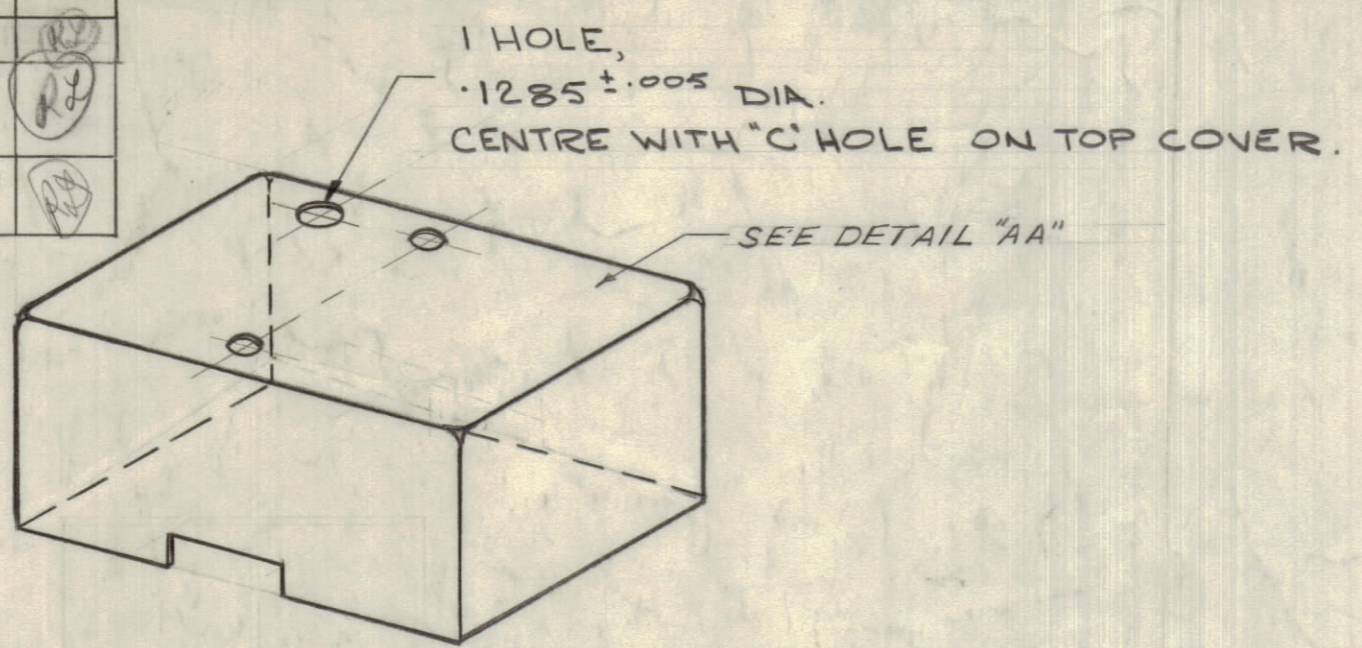


IF IT IS FOUND DESIRABLE TO CHANGE ANY TOLERANCE OR OTHER DETAIL SPECIFIED ON THIS DRAWING NOTIFY THE PURCHASER PROMPTLY.		DIMENSIONS IN INCHES UNLESS OTHERWISE SPECIFIED					
MAXIMUM ALLOWABLE TOLERANCES HAVE BEEN DETERMINED AND DEVIATIONS WILL BE CAUSE FOR REJECTION. REMOVE ALL BURRS AND SHARP EDGES.							
ISSUE	ITEM	CHANGED FROM	DATE	CN. NO.	DRAFTS	CHECKER	ENG. APP.
Ø		RELEASED	21-2-66		RD		
A		REVISED. REF SNELGROVE DWG MARCH 4	11 MAR 66		RD		
B		REVISED AS PER CEMN	AUG 30/66	CEMNO70	GM	Ref	

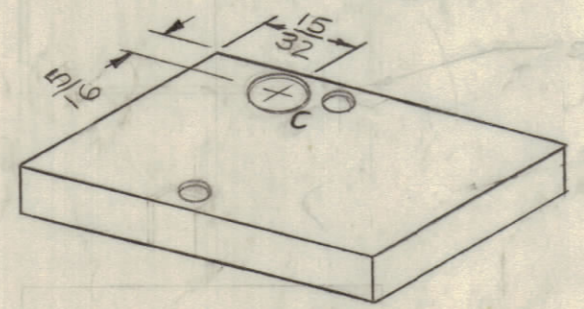
ISSUE	ITEM	CHANGED FROM	DATE	CN. NO.	DRAFT	CHECK	APP
C		REV PER CEMN	10-5-67	222	RD	W	
D		REV PER CEMN	30/6/67	257	AP	W	
E		REV AS PER CEMN	FEB. 1/68	331	RPC		
F		REV. PER CEMN	28DEC71	1113	PL		

REQ.	ITEM	PART NO.	DESCRIPTION	SYMBOL
------	------	----------	-------------	--------

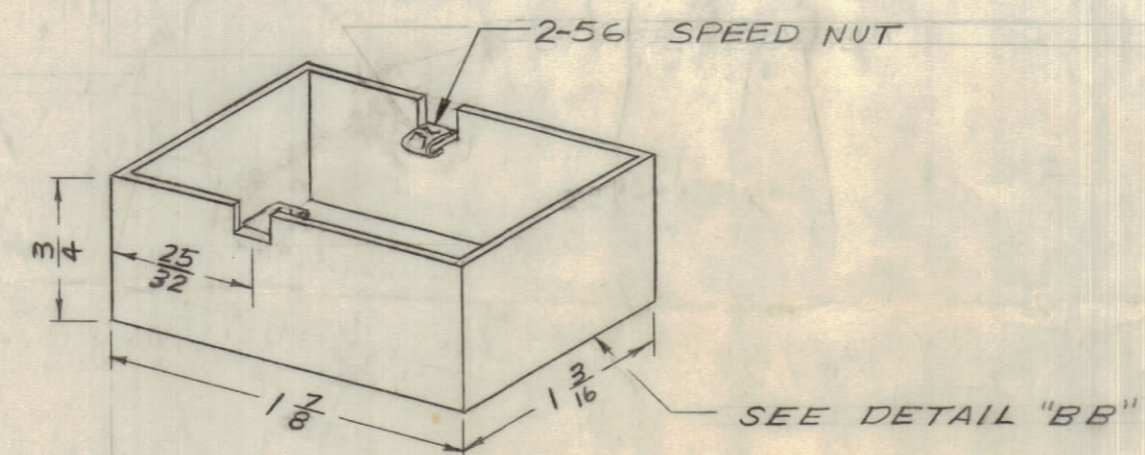
OVEN COVER



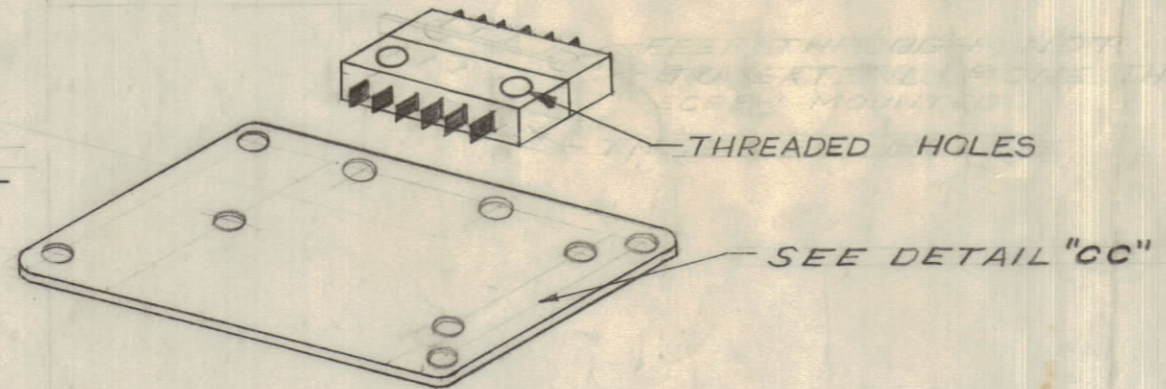
TOP COVER



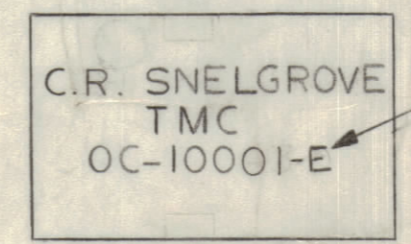
OVEN



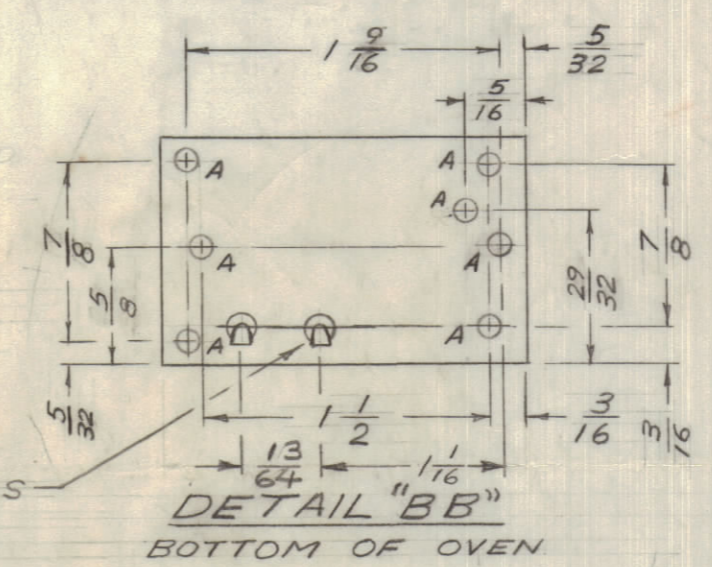
OVEN STAND



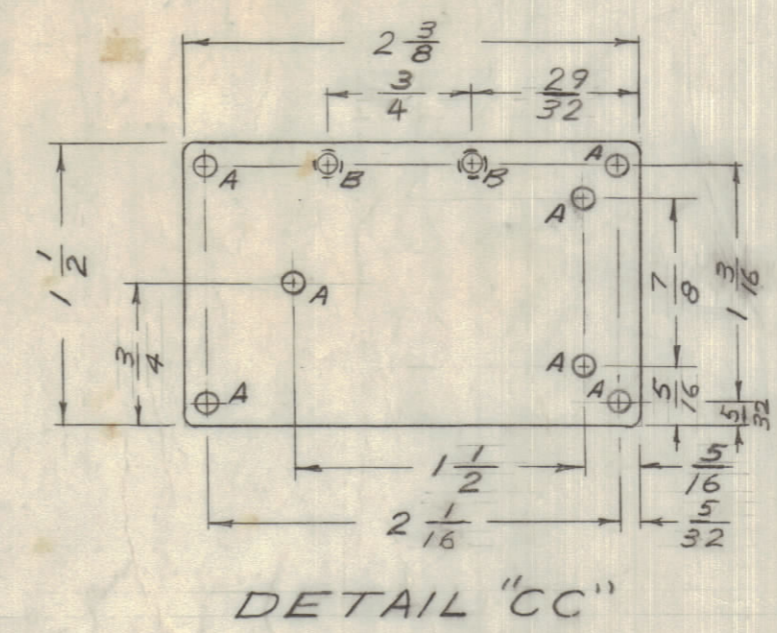
DETAIL "AA"



BEFORE TO ASSEMBLY THE FOLLOWING WIRES MUST BE ATTACHED TO PINS 4, 5 & 6 AND BROUGHT UP THROUGH HOLES IN CASE MARKED *
 TMC PART NO. C/W LATEST REV. LETTER
 A) TYPE: TESTRAIL'S #24
 EXTRUDED TEFLON INSULATION ALPHA TYPE # 2852
 B) COLOUR CODE:
 TERM 4 = 9 (WHITE)
 5 = 0 (BLACK)
 6 = 7 (VIOLET)
 C) LENGTH:
 EACH WIRE 5" LONG.
 IF PINS 1&2 WILL HAVE HEATER WIRES.
 D) TEFLON SLEEVING WILL BE USED AS FEEDTHROUGH INSULATION FOR WIRES



DETAIL "BB"
BOTTOM OF OVEN

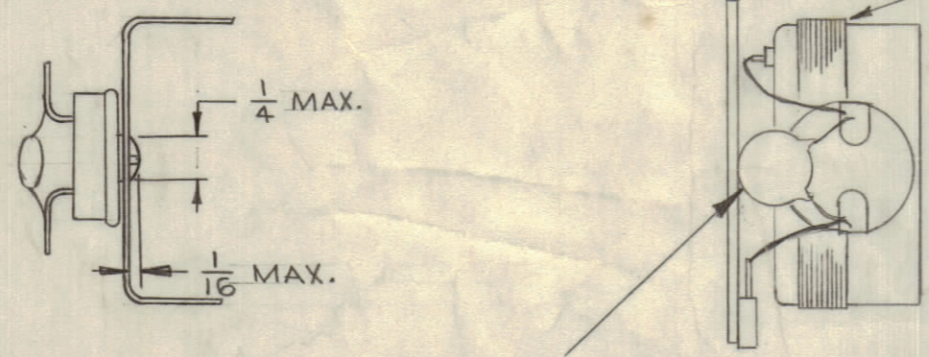


DETAIL "CC"

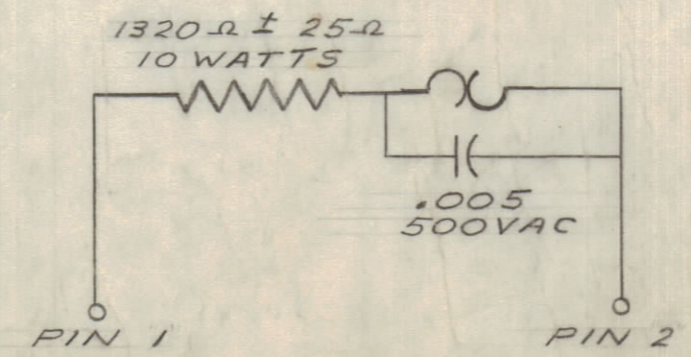
A HOLES 7/64 DIA.
 B HOLES 3/32 DIA. # C'SK
 CHOLE 1/4 DIA.

WINDING:
 APPROX. 9 FT OF MA-23
 EVANOHM 194.3 Ω/FT.

AMOUNT OF SOLDER REQ'D. ON THERMOSTAT



.005 μF 500VAC CAPACITOR



NOTE
 1-INSULATE ALL SIDES AND TOP
 2-110VAC 75°C
 3-TMC PART NO C/W LATEST REV.

OC10001 F

TOLERANCES		SCALE: NTS
ALL OTHERS	DEC. DIM. ± FRAC. DIM. ± ANGULAR DIM. ±	DRILL, PUNCH, COMMERCIAL STOCK SIZES AND MANUFACTURERS TOLERANCES ARE NOT INCLUDED.

AX10034			
AX10010			
TTR	005/66		21 FEB 66
MODEL	PROJECT NO.	ASSY. NO.	DATE

STOCK SIZE		PLUMMER	
MATERIAL		TMC (Canada) LIMITED OTTAWA ONTARIO	
WEIGHT PER PC.		OVEN MODULE ASSY	
TYPE & TEMPER		HF OSC.	
HEAT TREAT. SPEC.		RD	AP
FINISH & SPEC. NO.		MECH. DES. APP.	ELEC. DES. APP.
		CHECKED	FINAL APPROVAL
		OC10001 F	