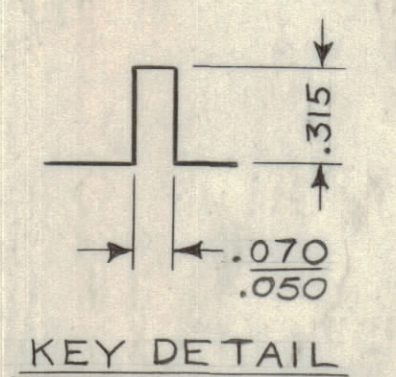
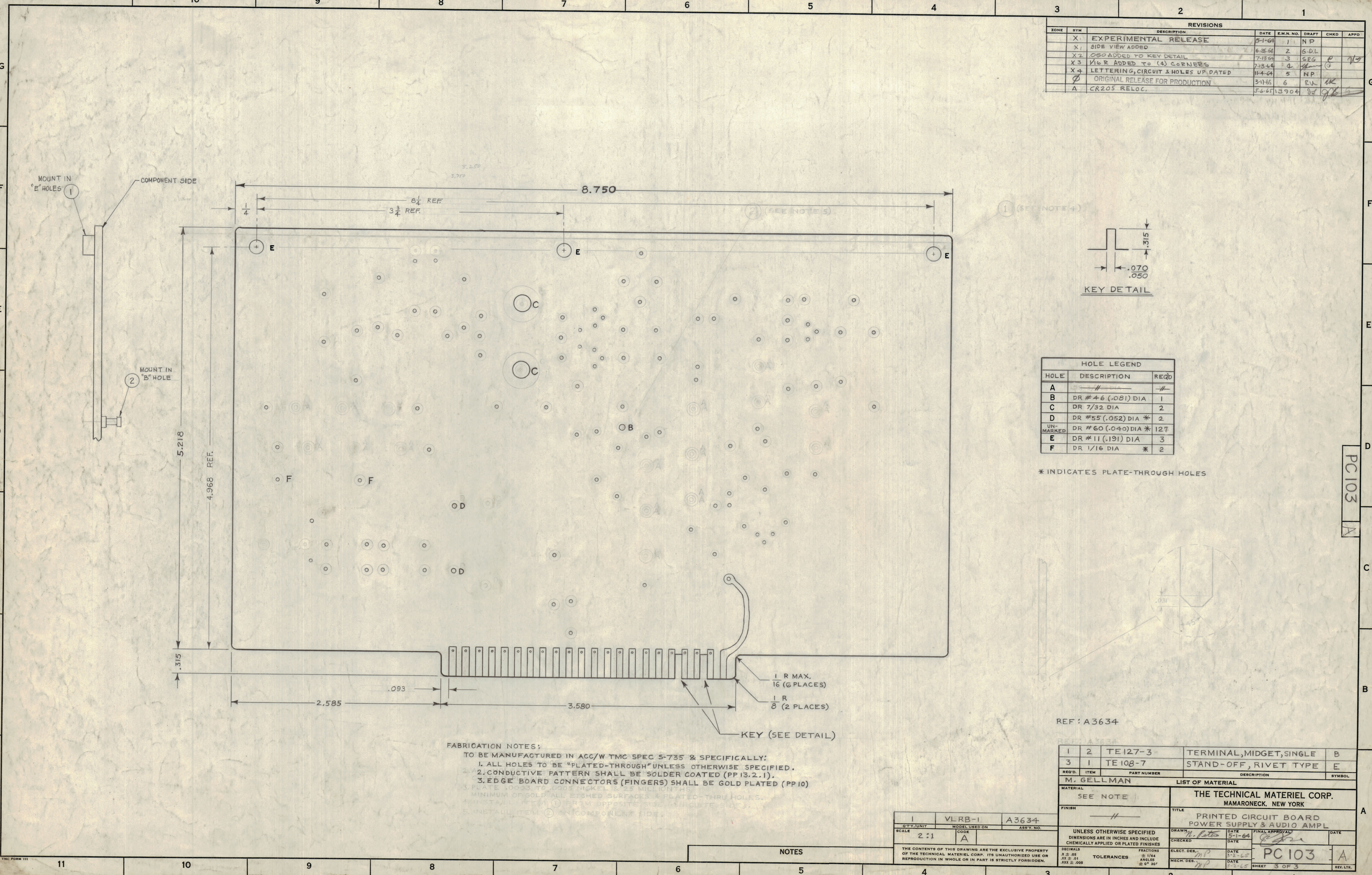


REVISIONS						
ZONE	SYM	DESCRIPTION	DATE	E.M.N. NO.	DRAFT	CHKD
	X1	EXPERIMENTAL RELEASE	9-1-64	1	NP	
	X1	SIDE VIEW ADDED				
	X2	OS ADDED TO KEY DETAIL	6-26-64	2	GDL	
	X3	1/6 R ADDED TO (4) CORNERS	7-13-64	3	SRG	
	X4	LETTERING, CIRCUIT & HOLES UP DATED	11-4-64	4		
	Ø	ORIGINAL RELEASE FOR PRODUCTION	3-11-65	6	RV	
	A	CR205 RELOC.	5-6-65	13904	SD	



HOLE LEGEND		
HOLE	DESCRIPTION	REQD
A	Ø	Ø
B	DR #46 (.081) DIA	1
C	DR 7/32 DIA	2
D	DR #55 (.052) DIA *	2
UN-MARKED	DR #60 (.040) DIA *	127
E	DR #11 (.191) DIA	3
F	DR 1/16 DIA	* 2

* INDICATES PLATE-THROUGH HOLES



- FABRICATION NOTES:
 TO BE MANUFACTURED IN ACC/W TMC SPEC 5-735 & SPECIFICALLY:
 1. ALL HOLES TO BE "PLATED-THROUGH" UNLESS OTHERWISE SPECIFIED.
 2. CONDUCTIVE PATTERN SHALL BE SOLDER COATED (PP13.2.1).
 3. EDGE BOARD CONNECTORS (FINGERS) SHALL BE GOLD PLATED (PP10).
 4. PLATE .0003 TO .0005 NICKEL & 25 MILLION THICK MINIMUM OF GOLD ALL ETCHED SURFACES & PLATED-THRU HOLES.
 5. INSTALL ITEM 1 FROM OPPOSITE SIDE (RIVET SIDE).
 6. INSTALL ITEM 2 ON COMPONENT SIDE.

REF: A3634

REQD.	ITEM	PART NUMBER	DESCRIPTION	SYMBOL
1	2	TE127-3	TERMINAL, MIDGET, SINGLE	B
3	1	TE108-7	STAND-OFF, RIVET TYPE	E

M. GELLMAN LIST OF MATERIAL

MATERIAL		THE TECHNICAL MATERIEL CORP.	
SEE NOTE 1		MAMARONECK, NEW YORK	
FINISH	TITLE	DATE	DATE
Ø	PRINTED CIRCUIT BOARD	5-1-64	
	POWER SUPPLY & AUDIO AMPL		
UNLESS OTHERWISE SPECIFIED DIMENSIONS ARE IN INCHES AND INCLUDE CHEMICALLY APPLIED OR PLATED FINISHES	DRAWN: M. GELLMAN	DATE: 5-1-64	DATE: 5-1-64
DECIMALS: X ± .05, XX ± .01, XXX ± .005	CHECKED: M. GELLMAN	DATE: 3-2-65	DATE: 3-2-65
FRACTIONS: ± 1/64, ANGLES: ± 6° 30'	MECH. DES: NP	DATE: 3-2-65	DATE: 3-2-65

PC 103 A

QTY./UNIT	MODEL USED ON	ASSY. NO.
1	VLRB-1	A3634

SCALE: 2:1

CODE: A

THE CONTENTS OF THIS DRAWING ARE THE EXCLUSIVE PROPERTY OF THE TECHNICAL MATERIEL CORP. ITS UNAUTHORIZED USE OR REPRODUCTION IN WHOLE OR IN PART IS STRICTLY FORBIDDEN.

NOTES

PC103 A